

## DocuSeal™ 40P

### ID-Laminator

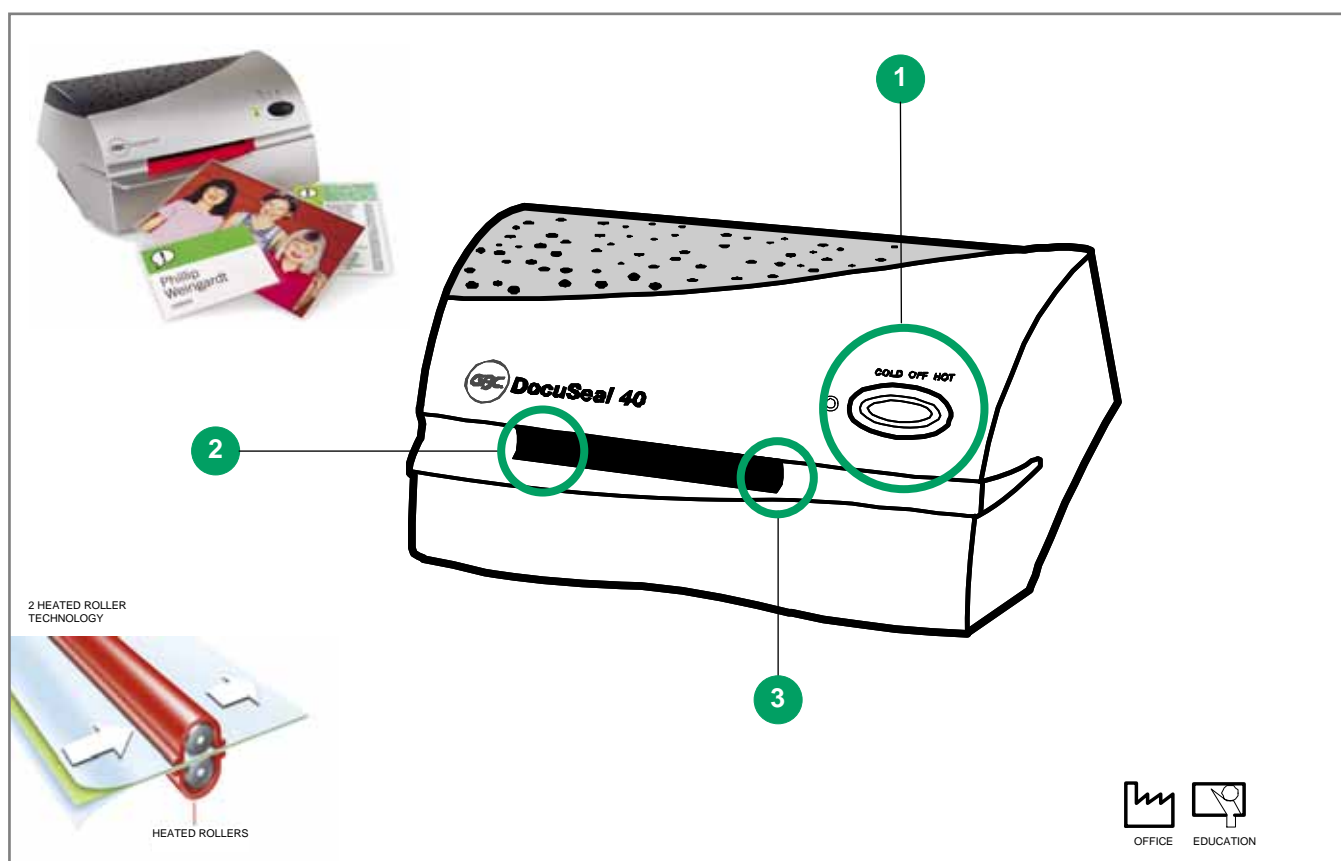
- Lamination width\* **A7 Max** (112 mm)
- Pouch capability – 2 x 125 Micron (**250 Total**)
- Carrier-free performance
- **Heated Roller Technology**
- Fixed 'Hot' + 'Cold' settings
- Up to 200 Credit Cards per hour capacity

Designed specifically for the Card! And simple to use!  
Ideal for Badges, Identity Cards, Luggage Tags, Security Passes, Reference Cards; Visitor Cards...and anything else that does not exceed the 112 mm throat width.

### Features & Benefits

- 1 'Cold/hot/Off' switch:**  
Simple to operate
- 2 Photo Quality:** Laminates on all paper surfaces
- 3 Ready Glow**
- 4 Only 3 to 5 minutes 'Warm up' period**

\* Lamination Width is the maximum insert width



### Technical Specifications

Photo quality	Yes
Heat-up Time (75 mic)	3-5 min.
Speed mm/min.	290
Temperature control	Hot / Cold
Cold Lamination	Yes
Speed control	Fixed
Rollers	2
Max. Document size	A7
Max. pouch thickness	2x125 Micron (250 Total)
Ready Lamp	-
Ready Glow	Yes
Release Function	-
Reverse	-

Display	-
Pouch counter	-
Auto switch off	-
A4 Laminates / hr*	202 Credit Cards
High Speed Pouches Laminates / hr*	No
Warranty	2 years
Dimensions	273x185x113
Certification	GS / TUV / CE
Weight	1.3 kg
Power Consumption Watts / Amps	300W/1.3A

\* Estimates only

GBC reserves the right to modify specifications without notice.

### Product Codes:

EU 1701290  
UK 1701300



[www.gbceurope.com](http://www.gbceurope.com)