



KONICA MINOLTA



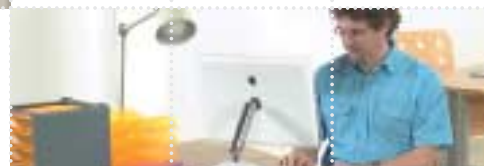
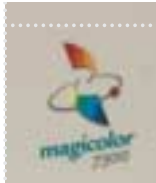
# magicolor 7300

21 ppm A4, 11 ppm A3 full colour  
600 x 600 dpi Photo ART™ con-tone resolution  
Up to A3+ paper input  
Ethernet, USB and parallel interfaces

POWERFUL  
COLOUR  
PRINTER



# magicolor 7300



## Volume business printing

The magicolor 7300 raises standards for high performance colour laser printing. It offers exceptional productivity and quality with a low cost of ownership; making it the obvious choice for anyone needing to produce high volumes of colour documents on-demand.

### Stunning Quality

Outstanding quality is achieved through Konica Minolta's Polymer Toner and Photo ART™ imaging technologies. Especially engineered Polymer Toner reduces the size and increases the consistency of toner particles, compared to conventional manufacturing techniques. This enables Photo ART™ technology to print more detailed digital-images, sharper text and smoother colour transitions, by increasing control over the number of colours the printer can print at each pixel on the page.

### Exceptional Performance

The magicolor 7300 uses a true laser system to print 21 full colour A4 pages, or 11 A3 pages per minute no matter which quality mode is selected. Allowing production of premium quality documents on demand with little effort. Adding a duplexer for automatic double-sided printing, presents users with the opportunity to produce a broad assortment of documents, saving both time and money compared to outsourcing.

## BASICS

### Print speed

21 ppm A4  
11 ppm A3 full colour

### Control Panel

Easy to operate control panel

### Compatibility

Windows 95/98/Me/NT4/2000/XP,  
Macintosh OS9x and OSX, Linux

### Memory

256 Mb standard upgradeable to 512 Mb

### Interfaces

PC/Mac: Ethernet (10/100BaseTX) PC;  
USB & Parallel 'Plug and Play' Compatible

### Paper size and input capacity

A3+, A3 and A4  
2 standard input trays of 250 and  
500 sheets



# Reliability, speed and excellent quality colour printing, at affordable prices.



## OPTIONS



### Duplex unit

Automatic two-sided printing, including manual paper feeder

### Hard Disk drive

Used for forms storage, job spooling, accounting, collation, storage of colour profiles and direct PDF printing.

### Service options

Service options are available to extend the on-site warranty of your printer

### Lower Feeder Units

500 sheets capacity in each, up to 2 lower feeder units can be added to the printer at any time.

### Printer Cabinet

The printer cabinet makes the printer floor-standing, thus eliminating the need to place it on a desk. It also provides handy storage space for paper and consumables.

## Highly Dependable

Innovative engineering and a robust design ensure reliability and durability. The magicolor 7300 has been built to the standards of excellence that have made Konica Minolta one of the largest manufacturers of printers and copiers in the world.

### Great choice for Business

With a low purchase price combined with the speed, quality and low cost per page, the magicolor 7300 offers excellent value to business users that need reliable high volume on-demand digital printing.

### Konica Minolta printers and consumables, a perfect match!

The magicolor 7300 uses polymer toner to give the very best print quality. Polymerised toner technology not only gives greater control over the particle size of the toner, it facilitates better control over colour and a cleaner printing process, resulting in better quality prints and a cleaner and more reliable printer.

### Exercise your options

The magicolor 7300 also has low cost options to increase the printer's paper capacity and allow automatic double sided printing. Full details of these with service and consumable options can be found at <http://printer.konicaminoltaeurope.com/configurator> with current list pricing.

For more information about Konica Minolta toner technology please visit <http://printer.konicaminoltaeurope.com/tonertechnology> or for specific information about consumables lifetimes and running costs of Konica Minolta printers please visit <http://printer.konicaminoltaeurope.com/tco>



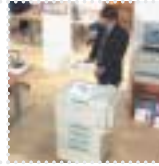




KONICA MINOLTA

magicolor 7300

## TECHNICAL DATA



### Printing Process

Print Method: Electrophotographic laser  
Print Speed:  
Colour/Monochrome: Up to 21 ppm A4, up to 11 ppm A3  
First page out: 16 seconds monochrome and colour  
Resolution: 600 x 600 dpi Photo ART™ con-tone  
Recommended Duty Cycle: Up to 80,000 prints/month

### Hardware and Software Capabilities

Processor type: PowerPC 405, 266 Mhz  
Memory: 256 Mb RAM Upgradeable to 512 Mb RAM  
Internal IDE Hard Disk: (optional) Fonts and forms storage, job spooling, accounting, direct PDF spooling and collation – up to 30 GB supported

### Printer Emulations

Standard: PostScript 3; Optional: PDF 1.3 (Hard Disk required)

### Colour Support

SWOP, Commercial and Eurocolor, Built-in Colour Rendering Dictionaries; PANTONE® Colour tables

### Interface Support

PC/Mac Interfaces supports: Ethernet (10BaseT/100BaseTX), PC only Interfaces supports: IEEE 1284 (ECP) parallel interfaces supporting Microsoft 'Plug and Play' and USB

### Operating System Compatibility:

Windows 95/98/Me/NT4/2000/XP, Linux, Macintosh OS9x, OSX NetWare® IPX/SPX; IPP; TCP/IP; EtherTalk®; SNMP, Novell NDS, Novell NDPS

### Paper Handling

Standard Paper Input: 500-sheet paper feeder and 250-sheet Universal feeder  
Maximum paper input: 1750 sheets  
Standard Paper Output: 250-sheet face-down output tray  
Duplex Printing: manual (automatic optional)  
Paper Sizes Supported:  
250-sheet universal feeder: A3, A4, A5, 12 x 18" (A3 Plus), Folio (A4 Plus), Statement, Oversized, B4, Letter, Executive, B5(JIS), B5(ISO), 8 x 10", Foolscap, SP Folio, Legal, 11 x 17", Postcard, Govt Legal, Govt Letter, Com 10 envelope, DL, Monarch, C5, C6, Japanese Chou 3, Japanese Chou 4, Chinese Kai 8, Chinese Kai 16, Chinese Kai 32, Custom  
500-sheet paper feeder: A3, A4, B4, Letter, B5(JIS), Legal, Ledger  
Printable Area: Guaranteed: 4 mm from all edges of the paper; 7 mm for 12" x 18" (A3 Plus) and oversized  
Paper Weights: Plain paper: 64 – 90 g/m<sup>2</sup>  
Thick stock: 90 – 210 g/m<sup>2</sup>  
Print Media: Plain paper, Recycled paper, thick stock, OHP transparencies, laser-quality labels, envelopes and Japanese Post Office standard postcards

### Physical

Type: Laser printer with internal controller  
Dimensions w/input & output trays extended (WxDxH): 628 mm x 594 mm x 564 mm  
Weight: w/o consumables: 47.2 kg; w/consumables 56.8 kg  
Carton Dimensions: 932 mm x 760 mm x 1110 mm  
Weight (as shipped): 79.8 kg

### Electrical

Power Requirements:  
220/240V Model: 220/240 VAC ±10%, 50/60 ±3% Hz  
Power Consumption (220V/240V): 1,400W max  
Energy Star Compliant<sup>2</sup>

### Model Specific Features

Features	magicolor® 7300
Print Speed – Colour/Monochrome	A4 up to 21 ppm
Print Speed – Colour/Monochrome	A3 up to 11 ppm
Resolution	Up to 600 x 600 dpi Photo ART™ con-tone
Memory (RAM)	256 MB
250-Sheet Universal feeder	•
500-Sheet Paper feeder	•
Optional 500-Sheet Paper feeder (max 2x)	* 1710537-001
250-Sheet Face-Down Output Tray	•
Automatic Duplexing/Manual feeder	* 1710538-100
Printer Cabinet	* 1710561-100
10BaseT/100BaseTX Ethernet	•
USB Interface	•
IEEE 1284 Parallel Interface	•
Internal hard drive	* 2600717-100

### \* Optional • Standard

### Environmental

Temperature Requirements: Operating: 10° to 32.5° C  
Non-Operating: 0° to 35°  
Humidity: Operating: 15% to 85% RH  
Non-Operating: 10% to 85% RH  
Noise Levels: Operating: <54 dB(A); Standby <40dB(A)

### Regulatory/Safety Conformity

UL, cUL, FCC-B, DOC, VCCI, CE Marking, C-Tick, CDRH

### Consumables<sup>1</sup>

Printer ships with one Cyan, Magenta, Yellow and Black toner cartridge (yield continuous printing 7,500 pages A4 @ 5% coverage; yield intermittent printing 6,000 pages A4 @ 5% coverage); CMYK Print Units (yield continuous printing 32,500 pages A4 @ 5% coverage; yield intermittent printing 26,000 pages A4 @ 5% coverage) and waste toner box (yield up to 8,000 pages per box, two boxes per sales unit). The yield of replacement consumables is identical to the starting kit.

### Warranty Period and Conditions

1 year on-site warranty (within EU)

Extended Warranty	magicolor® 7300
1 year on-site warranty	1760442-001
Repair outside warranty	1760442-005

<sup>1</sup> The stated life expectancy of each consumable in your printer is based on printing under specific operating conditions such as page coverage for a particular page size (5% coverage of A4). The actual consumables life will vary depending on the use and other printing variables including page coverage, page size, media type, continuous or intermittent printing, ambient temperature and humidity.

<sup>2</sup> The addition of some options, in some combinations may cause the product to become non-compliant. Energy Star compliance does not represent an EPA endorsement of any product or service.

©2004 Konica Minolta Holdings, Inc.  
All rights reserved. Specifications are subject to change without notice.  
The Konica Minolta logo, magicolor are trademarks or registered trademarks of Konica Minolta Holdings, Inc. All other trademarks or registered trademarks are the property of their respective owners.

Partnumber: 1730877-001

**Belgium and Luxembourg**  
Konica Minolta  
Printing Solutions Europe B.V.  
Tel: (+32) 2 – 479 64 23  
Fax: (+32) 2 – 479 97 42

**Denmark**  
Konica Minolta  
Business Solutions Denmark a/s  
Tel: (+45) 72 – 21 21 21  
Fax: (+45) 72 – 21 21 22

**Finland**  
Renatus OY  
Tel: (+358) 9 4 20 61  
Fax: (+358) 9 4 20 62 00

**France**  
Konica Minolta  
Printing Solutions France S.a.r.l.  
Tel: (+33) 01-41-07-93-93  
Fax: (+33) 01-40-83-01-10

**Germany and Austria**  
Konica Minolta  
Printing Solutions Deutschland GmbH  
Tel: (+49) 89/63 02 67-0  
Fax: (+49) 89/63 02 67-67

**Italy**  
Konica Minolta  
Business Solutions Italia S.p.a  
Tel: (+39) 02 39 011 1  
Fax: (+39) 02 39 011 219

**Middle East**  
Konica Minolta  
Printing Solutions Europe B.V.  
Tel: (+97) 1 4 335 2574  
Fax: (+97) 1 4 335 2573

**Norway**  
Konica Minolta  
Business Solutions Norway AS  
Tel: (+47) 2 27 89 800  
Fax: (+47) 2 27 89 850

**Portugal**  
Konica Minolta  
Business Solutions Portugal Lda  
Tel: (+351) 217 81 47 00  
Fax: (+351) 217 81 47 91

**Spain**  
Konica Minolta  
Business Solutions Spain S.A.  
Tel: (+34) 91 327 73 00  
Fax: (+34) 91 327 09 00

**Sweden**  
Konica Minolta Business Solutions  
Nordic AB  
Tel: (+46) 8 – 622 51 00  
Fax: (+46) 8 – 622 51 24

**Switzerland**  
Konica Minolta Printing Solutions B.V.  
Tel: (+41) 1/740 96 40  
Fax: (+41) 1/740 94 70

**The Netherlands**  
Konica Minolta Printing Solutions B.V.  
Tel: (+31) 30 – 248 1200  
Fax: (+31) 30 – 248 1211

**United Kingdom and Ireland**  
Konica Minolta  
Printing Solutions (UK) Ltd.  
Tel: (+44) 1784 – 442255  
Fax: (+44) 1784 – 461641

**For all other countries**  
Konica Minolta  
Printing Solutions Europe B.V.  
Tel: (+31) 30 – 248 1200  
Fax: (+31) 30 – 248 1211