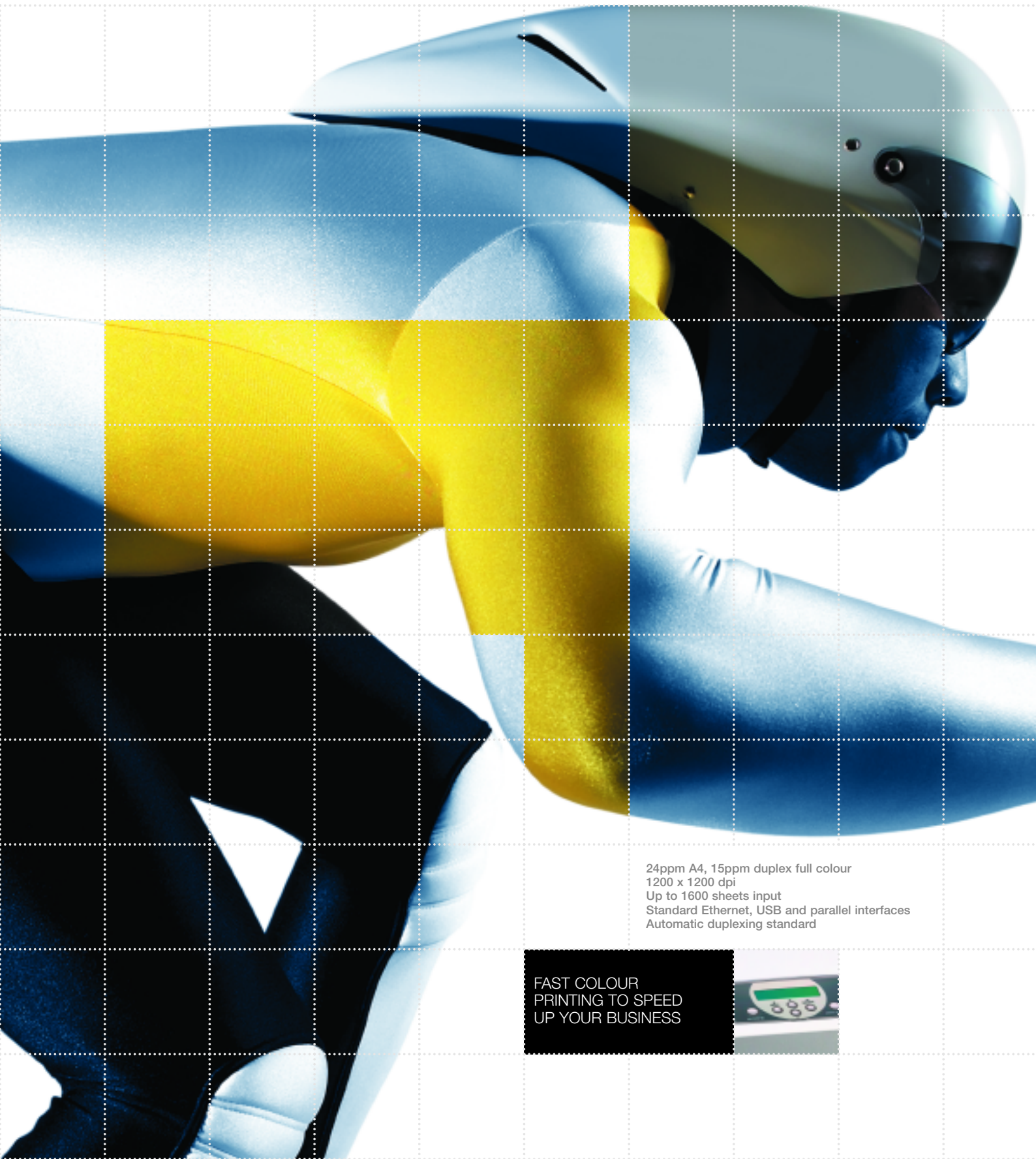




KONICA MINOLTA

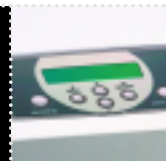


magicolor 3300



24ppm A4, 15ppm duplex full colour
1200 x 1200 dpi
Up to 1600 sheets input
Standard Ethernet, USB and parallel interfaces
Automatic duplexing standard

FAST COLOUR
PRINTING TO SPEED
UP YOUR BUSINESS





Upgrade to fast workgroup colour

The Konica Minolta magicolor 3300 enables businesses to produce premium quality colour reports, presentations, spreadsheets and brochures with quality, speed and reliability they can depend upon. Its 24 ppm colour print speed, standard duplexer and network card makes the versatile magicolor 3300 an inspired upgrade for tired out workgroup printers.

Ready for business printing needs

The magicolor 3300's compact design masks its full potential, but when it bursts into operation, racing through 24 full colour pages a minute, the printer's true character is revealed. Many standard offerings including stunning 1200 x 1200 dpi full colour prints which are clearly distinguishable from the competitors; PostScript and PCL support for compatibility with nearly all contemporary software; automatic double-sided printing to save paper and a network interface to help share these benefits among many users, set the magicolor 3300 apart from the other printers.

Printing you can depend on

The magicolor 3300 has been designed and built to meet the challenges of business printing today, with the innovation and experience, which has made Konica Minolta one of the largest suppliers of printers and copiers in the world.

BASICS

Print speed

24 ppm A4, 15 ppm Duplex

Control Panel

Easy to operate control panel

Duplexer

Automatic double-sided printing saving paper and increasing printing flexibility

Consumables

Easy to replace, high capacity toner cartridges

Compatibility

Windows 95/98/Me/NT4/2000/XP, Linux, Macintosh

Memory

256 Mb RAM upgradeable to 512 Mb

Paper Size & Input

A4: 2 standard input trays of 500 sheet feeder & 100 (multipurpose) up to 216 g/m²

Printer Emulations

PostScript level 3, PCL6 emulations, PDF (with optional Hard disk) and HP-GL

Interfaces

Ethernet (10/100BaseTX)
USB
Parallel 'Plug and Play' compatible



Fast, easy and affordable colour printing.



OPTIONS

Scancopy

With this Konica Minolta digital copier option, the magicolor 3300 can be used as a convenient walk-up copy and print station.

Scanner Stand

A tailor made stand is also available to mount the Scancopy above the magicolor 3300.

Hard Disk drive

Used for forms storage, job spooling, PDF printing (v1.3), accounting, virtual memory and collation.

Service options

Konica Minolta sets exceptional standards of customer care and service, we offer free technical hot-line support and simple, flexible and comprehensive service options.

High Capacity Input Feeder

High Capacity Input Feeder with 1000 (2 x 500) A4 sheets capacity, which makes the printer floor standing. An A4 500 sheet input feeder is also available (not floor standing).

Printer cabinet

A printer cabinet is available to make as an alternative to the High Capacity input Feeder making the printer floor standing and providing storage space.

Cutting edge technology

The magicolor 3300 uses several innovative technologies permitting high print speeds without compromising quality or reliability. PRISMLASER Technology™ allows the printer to combine the Cyan, Yellow, Magenta and Black toners (which make up a full colour image) in a single unit, for superior toner placement accuracy. Custom engineered polymer toner is used for maximum control over the toners pigment and size, improving print consistency.

The toner is also engineered for easy fusing, reducing the printers required operating temperature and power consumption, whilst specifically engineered adhesion qualities promote cleaner operation for greater reliability. The magicolor also auto-calibrates itself for changes in room humidity and temperature, setting standards for print consistency.

Doing it the easy way

The magicolor 3300 comes with a suite of Konica Minolta PageScope management software making it simple to manage, install and configure your printer on a network, and seamless integration with mainstream enterprise management systems. For more details visit <http://printer.konicaminoltaeurope.com/Pagescope>

Customise to your needs

The magicolor 3300 also has low cost options to increase the printer's paper capacity, add copying functionality and enhance performance. Full details of these options, service and consumable can be found at <http://printer.konicaminoltaeurope.com/configurator> with current list pricing.





KONICA MINOLTA

magicolor 3300

TECHNICAL DATA



Printing Process

Print Method: Electrophotographic laser
Print Speed (simplex): Colour/Monochrome: up to 24 ppm A4
Print Speed (duplex): up to 15 ppm A4
First page out: less than 13 seconds monochrome, less than 16 seconds colour
Resolution: 600 x 600 dpi full speed; 1200 x 1200 dpi full speed; 1200 x 1200 dpi half speed
Duty Cycle max 60,000 per month

Hardware and Software Capabilities

Processor type: QED 7065c R5000, 450 Mhz
Memory: 256 MB RAM Upgradeable to 512 MB RAM
Internal IDE Hard Disk: (optional) Fonts and forms storage, job spooling, accounting, collation, PDF printing (v1.3) and virtual memory max 2.2 GB

Printer Emulations

PostScript® 3; PCL® 6; PCL® 5/GL2; HP® GL; Line printer; PDF v1.3 (requires hard drive option)
Colour Support: Automatic colour correction; SWOP, Commercial and Eurocolor press imulations, Built-in Colour Rendering Dictionaries; PANTONE® Colour tables; ICC-compliant profiles for ColorSync and ICM; Automatic Image Calibration

Typefaces

137 resident PostScript® fonts; 46 PCL® fonts; 40 HP® GL fonts

Interface Support

Simultaneous Interface Operation: All interfaces receive data at the same time
Standard Interfaces: CrownNet® for Ethernet (10BaseT/100BaseTX); supports NetWare® IPX/SPX; IPP; TCP/IP; EtherTalk®; OS/2 LAN Manager/Lan Server; NetBEUI/NetBIOS; Windows 95/98/Me/NT4/2000/XP NetBEUI/NetBIOS; IEEE 1284 (ECP) parallel interfaces & USB 1.1 supporting Microsoft 'Plug and Play'

Operating System Compatibility

Windows 95/98/Me/NT4/2000/XP, Linux, Mac OS9x, OSX

Model Specific Features

Features	magicolor® 3300
Print Speed – Colour/Monochrome	A4 up to 24 ppm
Resolution	600 x 600 dpi
	Up to 1200 x 1200 dpi
Memory (RAM)	256 MB
100 Sheet Multi-Purpose Feeder (A4)	•
500 Lower Feeder Unit (A4)	•
Automatic Duplexing	•
10BaseT/100BaseTX Ethernet	•
USB Interface	•
IEEE 1284 Parallel Interface	•
Printer Cabinet	* 1710557-001
Scanner Stand	* 1710558-001
Scancopy sc-215	* 1710515-100
Automatic document feeder	* 1710374-100
500 Sheet Lower Feeder Unit (LFU)	*+ 1710553-001
1000 sheet (2 x 500) High Capacity input Feeder (HCF)	*+ 1710554-001
Internal hard drive	* 2600691-100
Time of day clock	* 2600515-100

Key = * Optional • Standard

Paper Handling

Standard Paper Input: 500 sheet Lower Feeder Unit and 100 sheet Multi Purpose Tray
Maximum paper input: 1600 sheets (4 sources)
Standard Paper Output: 250-sheet face-down output tray
Duplex Printing: automatic
Paper Sizes Supported:
Lower Feeder Unit (500 sheet): A5, Executive, B5 JIS, A4, Letter, Folio, Legal
Multi Purpose Feeder (100 sheet): A5, Statement, A4, Letter, Executive, B5 (JIS), B5 (ISO), Folio, Legal, Japanese PostCard, Env #10, Env Chou #3, Env Chou #4, Env DL, Env Monarch, Env C5, Env C6, Kai 16, Kai 32, Custom Paper Size width (88.9 mm min-215.9 mm max) length (139.7 mm min-900 mm max)
Printable Area: 4 mm from all edges, maximum printable area 207.9 x 347.6 mm
Print Media: Plain Paper (60-105 gm²), Glossy Plain, Transparency, Thick 2 (105- 162 gm²), Thick 3 (163-216 gm²), Labels Stock, Envelopes, Postcard

Physical

Type: Laser printer with internal controller
Dimensions (DxWxH) 638 mm x 439 mm x 445 mm
Weight: w/o consumables: 29.2 kg; w/consumables 34.9 kg; packaged to ship 46kg
Carton Dimensions: 571 mm x 750 mm x 806 mm

Electrical

Power Requirements:
220/240V Model: 220/240 VAC ±10%, 50/60 ±3% Hz
Power Consumption (220V/240V): 850W max; 70W or less standby;
Energy Star Compliant²

Environmental

Temperature Requirements: Operating: 10° to 32.5°C;
Non-Operating: 0° to 35°
Humidity: Operating: 15% to 85% RH;
Non-Operating: 10% to 85% RH
Noise Levels: Operating: <50 ISO dBA

Regulatory/Safety Conformity

UL, cUL, FCC-B, DOC, VCCI, CE Marking, C-Tick, CDRH

Consumables¹

Printer ships with start-up capacity set of each Cyan, Magenta, Yellow (yield up to 3,000 pages) and Black toner cartridges (yield up to 4,000 pages).
Standard Consumable Capacity: Cyan, Magenta, Yellow (yield up to 6,500 pages) and Black toner cartridges (yield up to 9,000 pages).
Prism Print Head (yield up to 30,000 pages), Transfer Unit (yield up to 25,000 pages) and Fuser Kit, 220v (yield up to 100,000 pages).

Warranty Period and Conditions

1 year on-site warranty (within EU)

Extended Warranty	magicolor® 3300
1 year on-site warranty	1760410-001

¹ The stated life expectancy of each consumable in your printer is based on printing under specific operating conditions such as page coverage for a particular page size (5% coverage of A4). The actual consumables life will vary depending on the use and other printing variables including page coverage, page size, media type, continuous or intermittent printing, ambient temperature and humidity.

² The addition of some options, in some combinations may cause the product to become non-compliant. Energy Star compliance does not represent an EPA endorsement of any product or service.

©2003 Konica Minolta Holdings, Inc.
All rights reserved. Specifications are subject to change without notice.
The Konica Minolta logo, magicolor are trademarks or registered trademarks of Konica Minolta Holdings, Inc. All other trademarks or registered trademarks are the property of their respective owners.

Partnumber: 1730913-001

Belgium and Luxembourg

Konica Minolta
Printing Solutions Europe B.V.
Tel: (+32) 2 – 479 64 23
Fax: (+32) 2 – 479 97 42

Denmark

Konica Minolta
Business Solutions Denmark a/s
Tel: (+45) 72 – 21 21 21
Fax: (+45) 72 – 21 21 22

Finland

Renatus OY
Tel: (+358) 9 4 20 61
Fax: (+358) 9 4 20 62 00

France

Konica Minolta
Printing Solutions France S.a.r.l
Tel: (+33) 01-41-07-93-93
Fax: (+33) 01-40-83-01-10

Germany and Austria

Konica Minolta
Printing Solutions Deutschland GmbH
Tel: (+49) 89/63 02 67-0
Fax: (+49) 89/63 02 67-67

Italy

Konica Minolta
Business Solutions Italia S.p.a
Tel: (+39) 02 39 011 1
Fax: (+39) 02 39 011 219

Middle East

Konica Minolta
Printing Solutions Europe B.V.
Tel: (+97) 1 4 335 2574
Fax: (+97) 1 4 335 2573

Norway

Konica Minolta
Business Solutions Norway AS
Tel: (+47) 2 27 89 800
Fax: (+47) 2 27 89 850

Portugal

Konica Minolta
Business Solutions Portugal Lda
Tel: (+351) 217 81 47 00
Fax: (+351) 217 81 47 91

South Africa

Konica Minolta
Printing Solutions Europe B.V.
Tel: (+27) 011 – 249 4000
Fax: (+27) 011 – 249 4039

Spain

Konica Minolta
Business Solutions Spain S.A.
Tel: (+34) 91 327 73 00
Fax: (+34) 91 327 09 00

Sweden

Konica Minolta Business Solutions Nordic AB
Tel: (+46) 8 – 622 51 00
Fax: (+46) 8 – 622 51 24

Switzerland

Konica Minolta Printing Solutions B.V.
Tel: (+41) 1/740 96 40
Fax: (+41) 1/740 94 70

The Netherlands

Konica Minolta Printing Solutions B.V.
Tel: (+31) 30 – 248 1200
Fax: (+31) 30 – 248 1211

United Kingdom and Ireland

Konica Minolta
Printing Solutions (UK) Ltd.
Tel: (+44) 1784 – 442255
Fax: (+44) 1784 – 461641

For all other countries

Konica Minolta
Printing Solutions Europe B.V.
Tel: (+31) 30 – 248 1200
Fax: (+31) 30 – 248 1211