



---

# **magicolor® 2430 DL**

## **Reference Guide**

---

**4139-7744-01A**

**1800770-001A-1**

## Copyright Notice

The digitally encoded software and publication included with your printer are Copyrighted © 2004 by KONICA MINOLTA BUSINESS TECHNOLOGIES, INC., Marunouchi Center Building, 1-6-1 Marunouchi, Chiyoda-ku, Tokyo, 100-0005, Japan. All Rights Reserved.

This software may not be reproduced, modified, displayed, transferred, or copied in any form or in any manner or on any media, in whole or in part, without the express written permission of KONICA MINOLTA PRINTING SOLUTIONS U.S.A., INC.

No part of this publication may be reproduced, stored in a retrieval system, or transmitted in any form or by any means, electronic, mechanical, photocopying, recording, or otherwise, without the prior written permission of KONICA MINOLTA. The information contained in this guide is intended for use with the KONICA MINOLTA magicolor 2430 DL printers only.

## About the GPL (General Public License)

This driver is written for Linux, which is written and distributed under the GNU GPL. The printing system CUPS adopted to run on the Linux is published by ESP (Easy Software Products) under the GPL. All source codes that we write must be available to the general public.

## Trademarks

KONICA MINOLTA and the KONICA MINOLTA logo are trademarks or registered trademarks of KONICA MINOLTA HOLDINGS, INC.

magicolor is a trademark or registered trademark of KONICA MINOLTA PRINTING SOLUTIONS U.S.A., INC.

## Notice

KONICA MINOLTA BUSINESS TECHNOLOGIES, INC. reserves the right to make changes to this guide and to the equipment described herein without notice. Considerable effort has been made to ensure that this manual is free of inaccuracies and omissions. However, KONICA MINOLTA BUSINESS TECHNOLOGIES, INC. makes no warranty of any kind including, but not limited to, any implied warranties of merchantability and fitness for a particular purpose with regard to this manual.

KONICA MINOLTA BUSINESS TECHNOLOGIES, INC. assumes no responsibility for, or liability for, errors contained in this manual or for incidental, special, or consequential damages arising out of the furnishing of this manual, or the use of this manual in operating the equipment, or in connection with the performance of the equipment when so operated.

---

# Contents

---

<b>1</b>	<b>Operation on Mac OS X .....</b>	<b>1</b>
	<b>System Requirements for the Printer Driver</b>	<b>2</b>
	<b>Installing the Printer Driver</b>	<b>3</b>
	Installing Ghostscript	3
	Installing the magicolor 2430 DL Printer Driver	7
	<b>Print Center/Printer Setup Utility Settings</b>	<b>12</b>
	When Using a USB Connection	12
	When Using a Network Connection	15
	Rendezvous (OpenTalk) Setting	15
	IP Printing Setting	17
	Specifying Port 9100	20
	<b>Selecting Print Options</b>	<b>23</b>
	<b>Uninstalling the Printer Driver</b>	<b>25</b>
	<b>Specifying Page Setup Settings</b>	<b>27</b>
	Page Attributes Options	28
	Custom Paper Size Options	29
	Summary	30
	<b>Specifying Print Settings</b>	<b>31</b>
	Print Dialog Box	32
	Common buttons	33

Copies & Pages	33
Layout	34
Duplex	35
Output Options	36
Paper Feed	37
Printer Features	38
Basic Features	39
Color Matching Options	40
Watermark Orientation	41
Watermark Selection	42
Watermark Setting	43
Summary	44
<b>Troubleshooting</b>	<b>45</b>
<b>2 Operation on Linux</b>	<b>47</b>
<b>System Requirements for the Printer Driver</b>	<b>48</b>
Setting Up the Printing System	49
<b>Installing the Printer Driver</b>	<b>50</b>
Installing the Software from the Desktop	50
Installing the Software from the Command Line	50
<b>Adding the Printer</b>	<b>51</b>
Adding the Printer from a Web Browser	51
Adding the Printer From the Command Line	53
<b>Uninstalling the Printer Driver</b>	<b>54</b>
<b>Specifying Printer Driver Settings</b>	<b>55</b>
Displaying the Settings Page	55
Printer Driver Settings	56
Basic Features	56
Color Matching Options	56
General	57
Options Installed	57
Watermark Orientation	57
Watermark Selection	58
Watermark Setting	58
Banners	59
<b>Specifying Print Settings</b>	<b>60</b>
KDE Print Dialog Box	60
Displaying the Print Settings Dialog Box	60
Print Settings	61
Print Dialog Box	65
Displaying the Print Settings Dialog Box	65
Print Settings	67
Example Using OpenOffice	69
<b>Checking Print Jobs</b>	<b>72</b>
<b>Troubleshooting</b>	<b>73</b>

<b>3</b>	<b>Understanding the Network Configuration Menus .....</b>	<b>75</b>
	<b>Network Menu 76</b>	
	Location within the Configuration Menu 76	
	Accessing the Network Menu 77	
	Using the Network Menu Options 77	
	DHCP/BOOTP 77	
	IP Address 78	
	Subnet Mask 78	
	Gateway 78	
	Mac Address 79	
	HTTP 79	
	SNMP 79	
	Forced Modes 80	
<b>4</b>	<b>Network Printing in a Windows Environment .....</b>	<b>81</b>
	<b>Network Connection 82</b>	
	Theory 82	
	Supported Environments 82	
	Making the Connection 83	
	Ethernet Interface 83	
	Using DHCP 83	
	Setting the Address Manually 84	
	<b>Network Printing 87</b>	
	BOOTP 87	
	DHCP 87	
	HTTP 87	
	IPP 88	
	LPD/LPR 88	
	SLP 88	
	SNMP 89	
	TCP/IP 89	
	Printing via IPP (Internet Printing Protocol) – Windows Server 2003/XP/2000 90	
	Adding an IPP Port 90	
<b>5</b>	<b>Using PageScope Web Connection .....</b>	<b>95</b>
	<b>About PageScope Web Connection 96</b>	
	Display Language 96	
	Requirements 96	
	<b>Setting Up the Printer Web Page 97</b>	
	Determining the Printer Name 97	
	Setting Up Your Browser Software 97	
	Internet Explorer (version 6.0 for Windows) 98	
	Netscape Navigator (version 7.1) 99	
	Safari (version 1.1) 99	

## **Understanding the PageScope Web Connection Window 100**

- Navigation 100
- Current Status 101
- User Mode 101
- Administrator Mode 101

## **Viewing Printer Status 102**

- System Page 102
  - Summary (shown above) 103
  - Details 104
  - Counter 108
  - Online Assistance 109
- Job Page 110
  - Active Job (shown above) 110
- Print Page 112
  - Test Print (shown above) 112

## **Configuring the Printer 113**

- System Page 113
  - User Choice (shown above) 113
  - Password 115
  - Preference 117
  - Online Assistance 119
- Network 121
  - Configuration (shown above) 121

---

# ***Operation on Mac OS X***

# **1**

# System Requirements for the Printer Driver

Before installing the printer driver, make sure that your system meets the following system requirements.

Computer	Apple Macintosh computer with a PowerPC G3 or later processor (PowerPC G4 or later is recommended)
Connecting the computer and printer	USB connection, network connection (10Base-T/100Base-TX)
Operating system	Mac OS X v10.2 or later
RAM	More than OS recommendation (128 MB or more is recommended)
Available disk space	256 MB or more (for storing images)

# Installing the Printer Driver



*You must have administrator privileges in order to install the printer driver.*



*Before proceeding with the installation, be sure to exit all running applications.*

## Installing Ghostscript

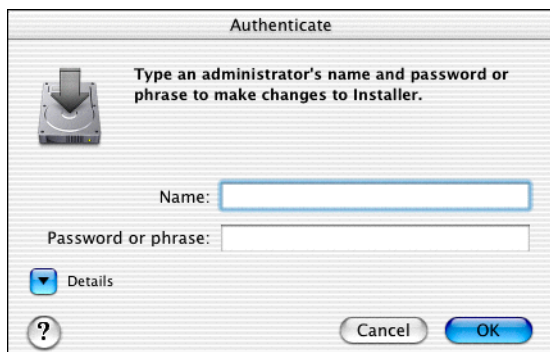
If you are using Mac OS 10.3, skip to "Installing the magicolor 2430 DL Printer Driver" on page 7. If you are using Mac OS 10.2, you must first use the following procedure to download and install Ghostscript before you install the printer driver.

- 1 To obtain the latest version of Ghostscript, search the Internet for "espgs-7.05.5-0.ppc.dmg".

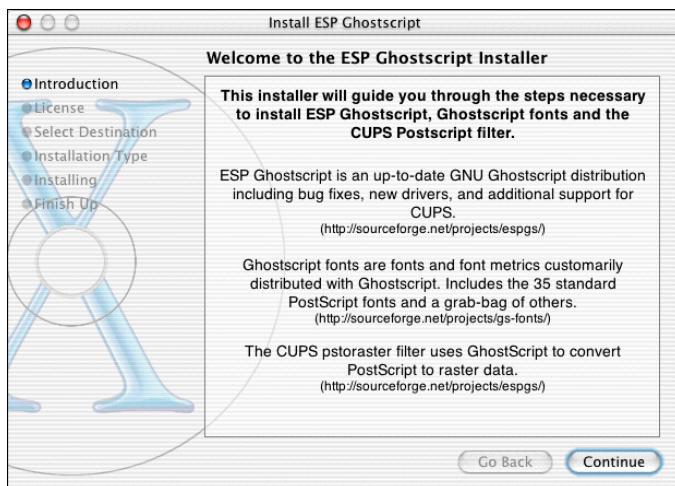


*Here we explain how to install the software from the **espgs-7.05.5-0.ppc.dmg** disk image file.*

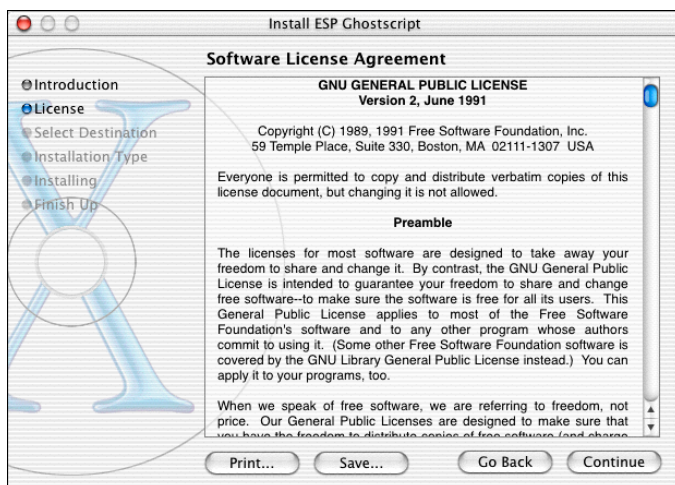
- 2 Double click the **espgs-7.05.5-0.ppc.dmg** file.  
The disk image **Install ESP Ghostscript 7.05.5** appears on the desktop.
- 3 Double click the **ESP Ghostscript.mpkg** package file in the disk image.
- 4 Enter the administrator user name and password in the **Authenticate** dialog box, and then click **OK**.



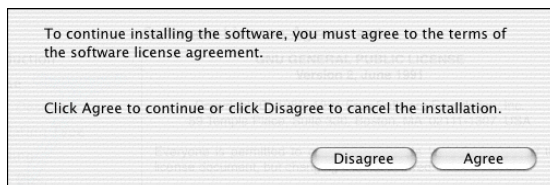
## 5 Click **Continue**.



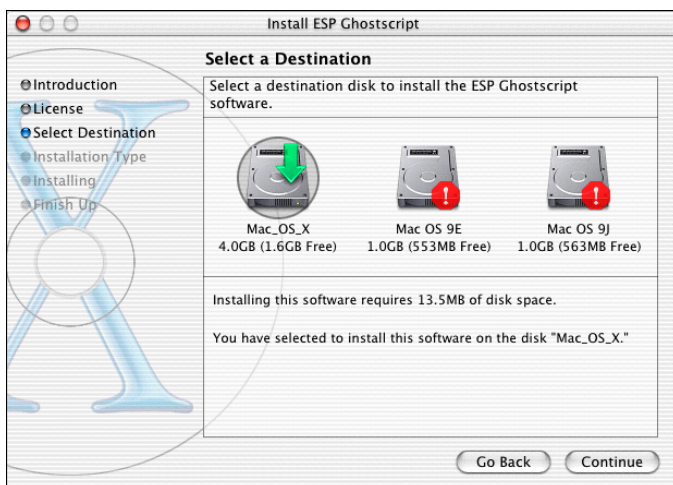
## 6 Check the details of the license agreement and click **Continue**.



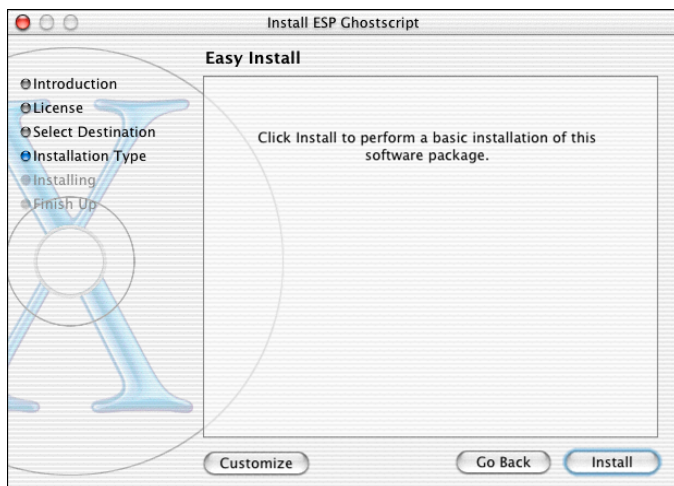
- 7 Click **Agree** in the confirmation dialog box, if you agree to the terms of the license.



- 8 In the **Select a Destination** page, select the disk in which you wish to install the software, and then click **Continue**.

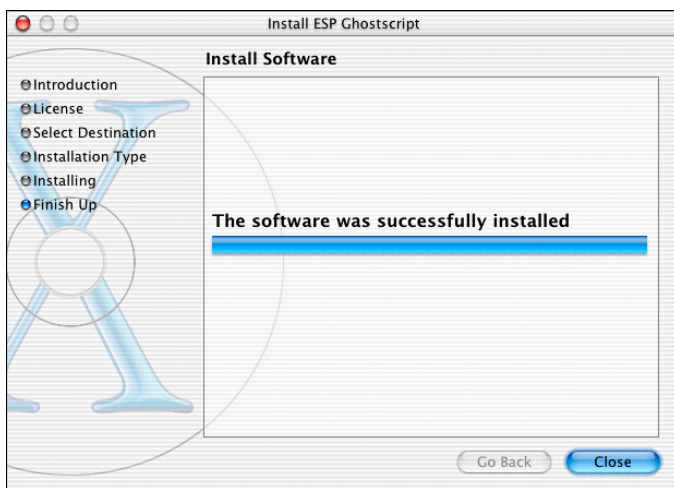


9 Click **Install** in the **Easy Install** page.



*Installation starts.*

10 After the installation has been completed, click **Close**.



This completes the installation of Ghostscript.

## Installing the magicolor 2430 DL Printer Driver



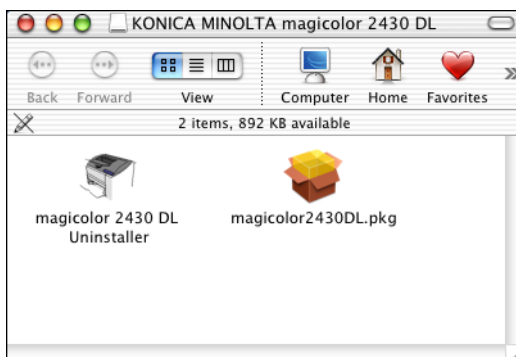
*The procedure for installing the printer driver on Mac OS 10.3 or 10.2 with Ghostscript is described below. The following procedure or some steps may be different depending on the version of the operating system being used. Complete the installation according to the instructions in the dialog boxes that appear.*

- 1 Insert the magicolor 2430 DL Utilities & Documentation CD-ROM in the CD-R/DVD drive of your Macintosh.

- 2 Double click the **magicolor2430DL-x.x.x-ppc.dmg** disk image file.

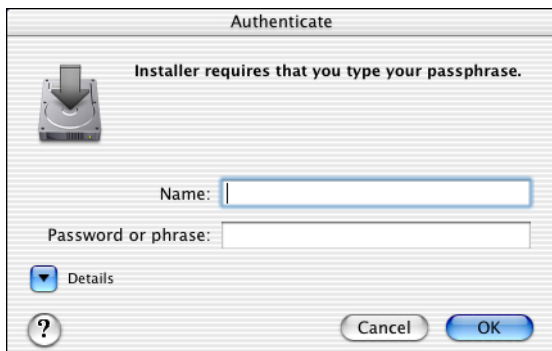
*The disk image **KONICA MINOLTA magicolor 2430 DL** appears on the desktop.*

- 3 Double-click the **magicolor2430DL.pkg** package file in the disk image.

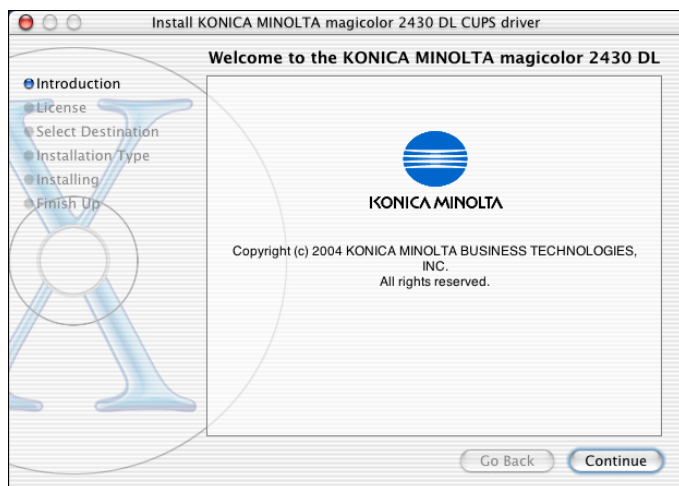


*The installer for the printer driver starts up.*

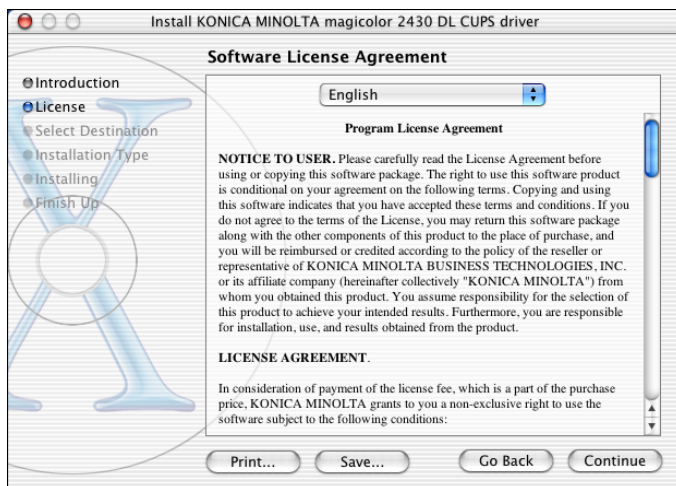
- 4 Enter the administrator user name and password in the **Authenticate** dialog box, and then click **OK**.



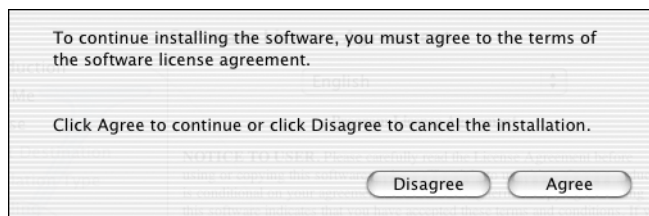
- 5 Click **Continue**.



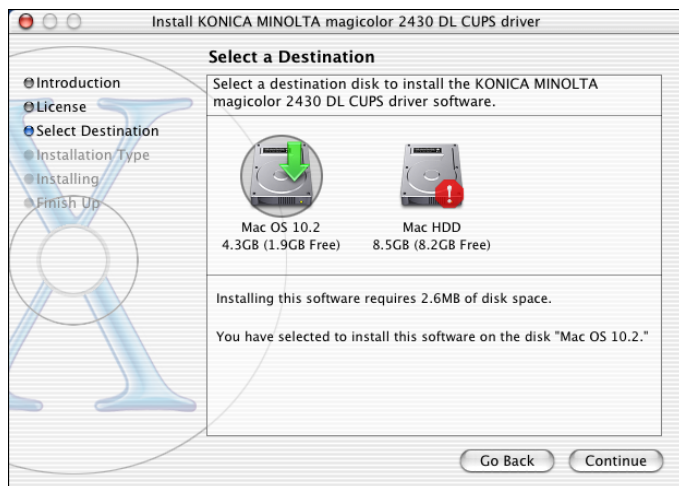
- 6 Check the details of the license agreement, and then click **Continue**.



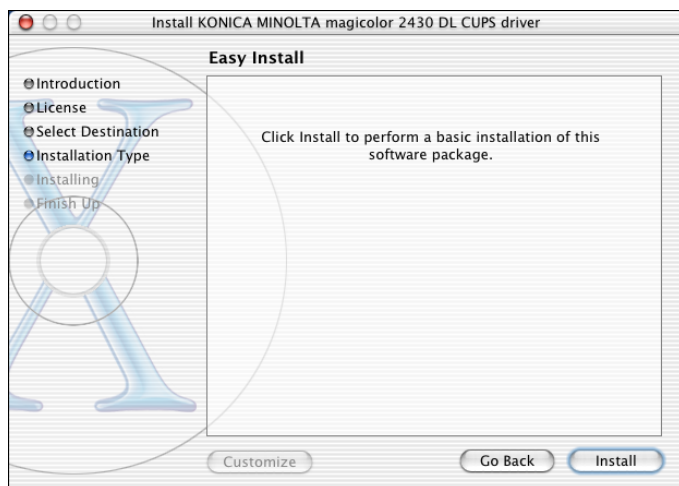
- 7 Click **Agree** in the confirmation dialog box if you agree to the terms of the license.



- 8 In the **Select a Destination** page, select the disk in which you wish to install the software, and then click **Continue**.

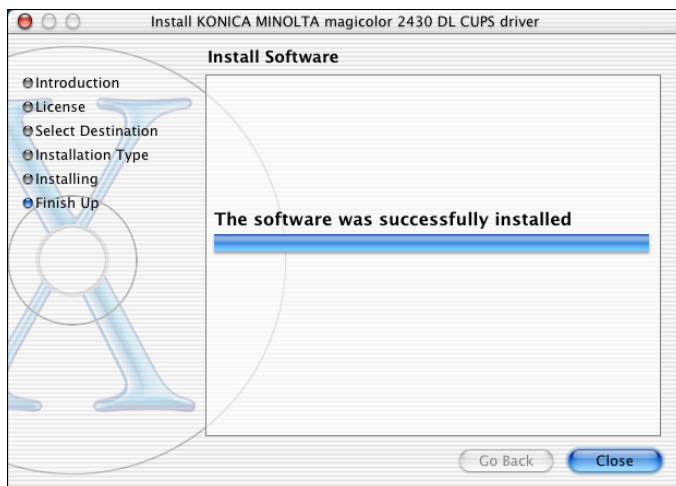


- 9 Click **Install** in the **Easy Install** page.



*Installation starts.*

10 After the installation has been completed, click **Close**.



This completes the installation of the magicolor 2430 DL printer driver.

# Print Center/Printer Setup Utility Settings

## When Using a USB Connection

- 1 Use a USB cable to connect the printer to your computer.
- 2 Check that the printer is turned on, and then restart the computer.
- 3 Open **Print Center**, which can be accessed by clicking Macintosh HD, then **Applications**, then **Utilities**.

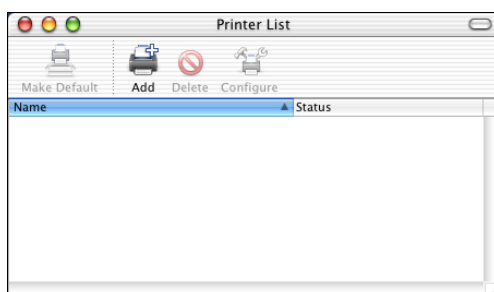


*For Mac OS 10.3, open **Printer Setup Utility**.*

- 4 In the **Printer List**, click **Add** while pressing the Option key in the keyboard.



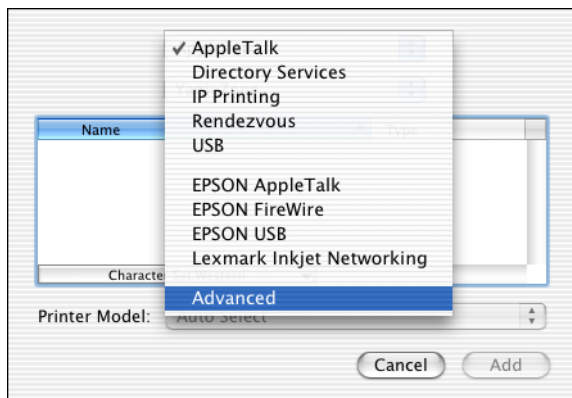
*For Mac OS 10.3, simply click **Add** without pressing the Option key.*



- 5 Select **Advanced** from the pop-up menu.

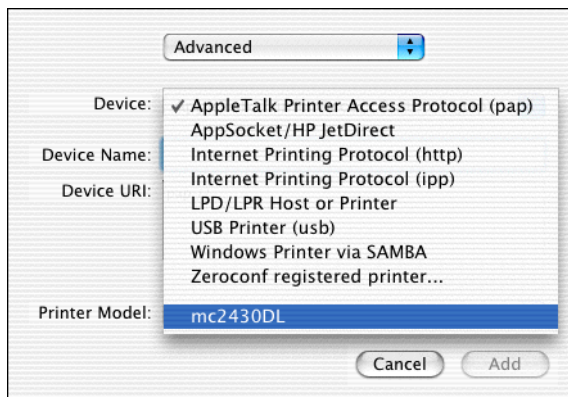



*For Mac OS 10.3, select **USB**.*



- 6 Select **mc2430DL** from the **Device** pop-up menu.

 For Mac OS 10.3, select **mc2430DL** in the **Product** list.



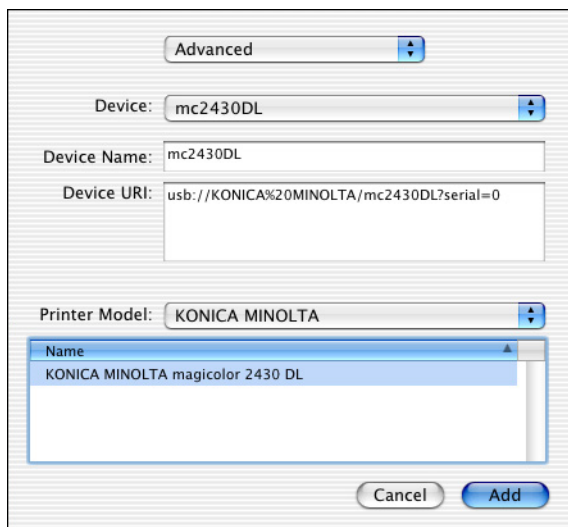
 If **mc2430DL** does not appear, check that the printer is turned on and the USB cable is connected, and then restart the computer.

 For Mac OS 10.3, go to step 8.

- 7 Select **KONICA MINOLTA** from the **Printer Model** pop-up menu.

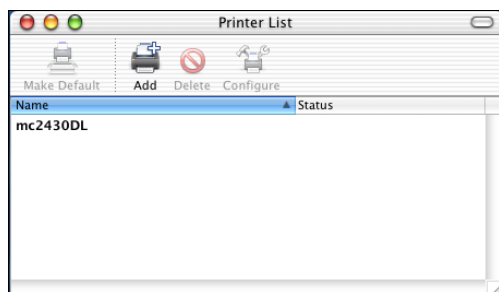
- 8 Select **KONICA MINOLTA magicolor 2430 DL** in the **Name** list.

 For Mac OS 10.3, select **KONICA MINOLTA magicolor 2430 DL** from the **Printer Model** pop-up menu.



## 9 Click **Add**.

*The new printer appears in the **Printer List** screen.*



## When Using a Network Connection

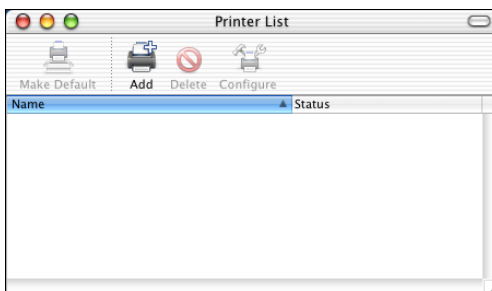
The network connection settings can be specified in one of three ways: Rendezvous setting, IP printing setting and Specifying Port 9100. We recommend using the Rendezvous setting.

### Rendezvous (OpenTalk) Setting



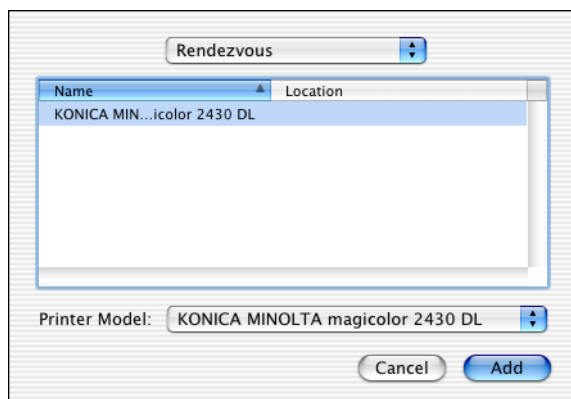
*Rendezvous (OpenTalk) should be enabled by default. However, if you are unable to connect to the printer, enable Rendezvous (OpenTalk) from the **Rendezvous Configuration** window in PageScope Web Connection (refer to chapter 5, “Using PageScope Web Connection”).*

- 1 Connect the printer to an Ethernet network.
- 2 Open **Print Center**, which can be accessed by clicking Macintosh HD, then **Applications**, then **Utilities**.
- 3 Click **Add** in the **Printer List**.



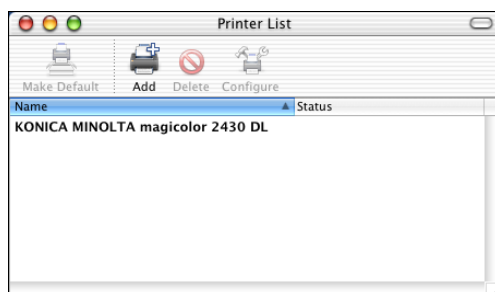
- 4 Select **Rendezvous** from the pop-up menu.

- 5 Select **KONICA MINOLTA magicolor 2430 DL** in the **Name** list.



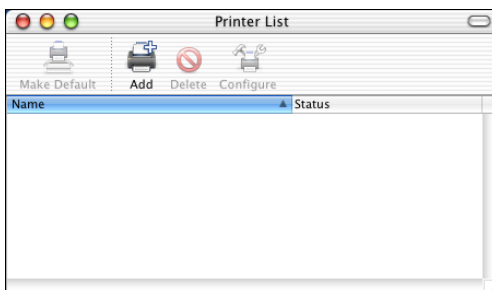
- 6 Click **Add**.

*The new printer appears in the **Printer List** screen.*

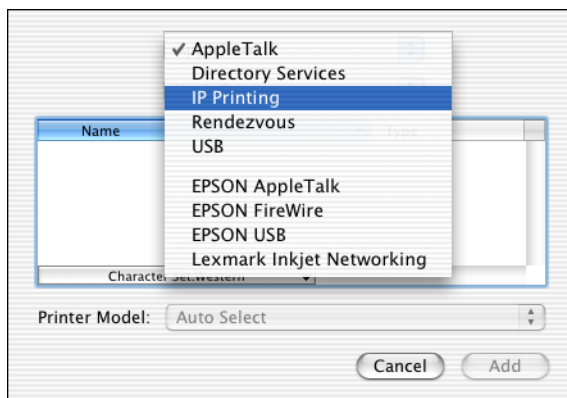


## IP Printing Setting

- 1 Connect the printer to an Ethernet network.
- 2 Open **Print Center**, which can be accessed by clicking Macintosh HD, then **Applications**, then **Utilities**.
- 3 Click **Add** in the **Printer List**.



- 4 Select **IP Printing** from the pop-up menu.



*The IP Printing screen appears.*

IP Printing

Printer's Address:   
Internet address or DNS name

☒ Use default queue on server  
Queue Name:

Printer Model:

Cancel Add

- 5 Enter the IP address for the printer in the **Printer's Address** text box.  
Clear the **Use default queue on server** check box.  
Enter "lp" in the **Queue Name** text box.

IP Printing

Printer's Address:   
Internet address or DNS name

Incomplete or invalid address.

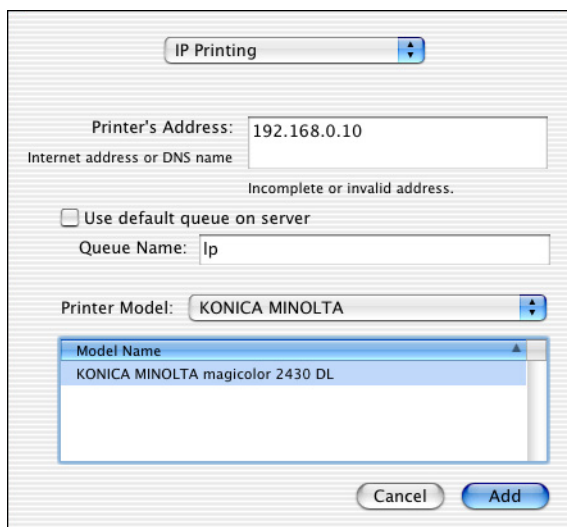
☐ Use default queue on server  
Queue Name:

Printer Model:

Cancel Add

- 6 Select **KONICA MINOLTA** from the **Printer Model** pop-up menu.

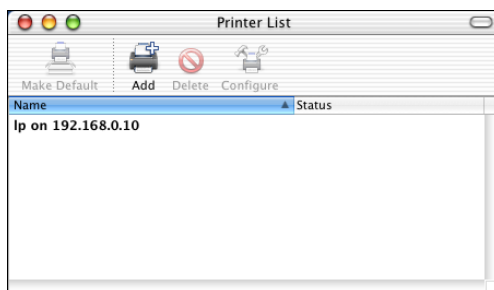
- 7 Select **KONICA MINOLTA magicolor 2430 DL** in the **Model Name** list.



The image shows a 'IP Printing' configuration window. At the top is a dropdown menu labeled 'IP Printing'. Below it, the 'Printer's Address' is set to '192.168.0.10' in a text field, with the label 'Internet address or DNS name' below it. A message 'Incomplete or invalid address.' is displayed. There is a checkbox for 'Use default queue on server' which is unchecked. The 'Queue Name' is 'lp'. The 'Printer Model' is set to 'KONICA MINOLTA' in a dropdown menu. Below this is a list box for 'Model Name' containing 'KONICA MINOLTA magicolor 2430 DL'. At the bottom are 'Cancel' and 'Add' buttons.

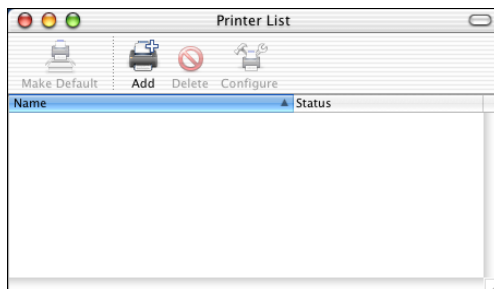
- 8 Click **Add**.

*The new printer appears in the **Printer List** screen.*

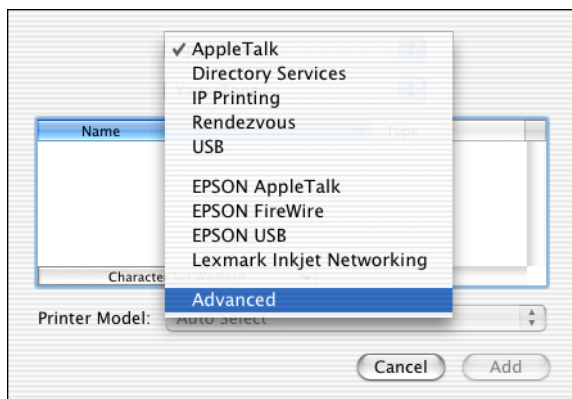


## Specifying Port 9100

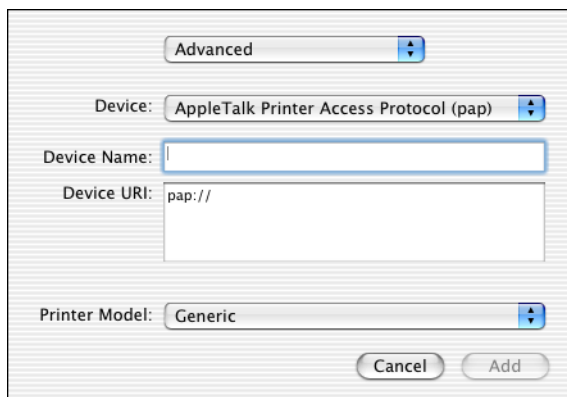
- 1 Connect the printer to an Ethernet network.
- 2 Open **Print Center**, which can be accessed by clicking Macintosh HD, then **Applications**, then **Utilities**.
- 3 In the **Printer List**, click **Add** while pressing the Option key.



- 4 Select **Advanced** from the pop-up menu.



The **Advanced** screen appears.



Advanced

Device: AppleTalk Printer Access Protocol (pap)

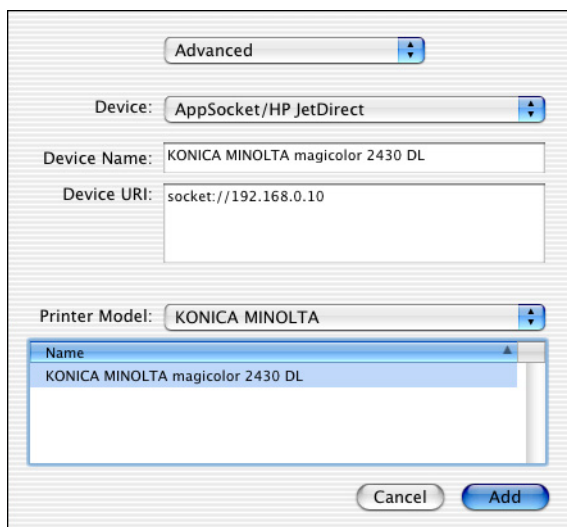
Device Name:

Device URI: pap://

Printer Model: Generic

Cancel Add

- 5 Select **AppSocket/HP JetDirect** from the **Device** pop-up menu.
- 6 Enter the name for the printer in the **Device Name** text box.
- 7 In the **Device URI** text box, enter “socket://” followed by the IP address for the printer.
- 8 Select **KONICA MINOLTA** from the **Printer Model** pop-up menu.
- 9 Select **KONICA MINOLTA magicolor 2430 DL** in the **Name** list.



Advanced

Device: AppSocket/HP JetDirect

Device Name: KONICA MINOLTA magicolor 2430 DL

Device URI: socket://192.168.0.10

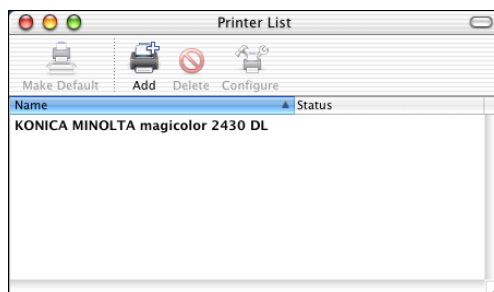
Printer Model: KONICA MINOLTA

Name  
KONICA MINOLTA magicolor 2430 DL

Cancel Add

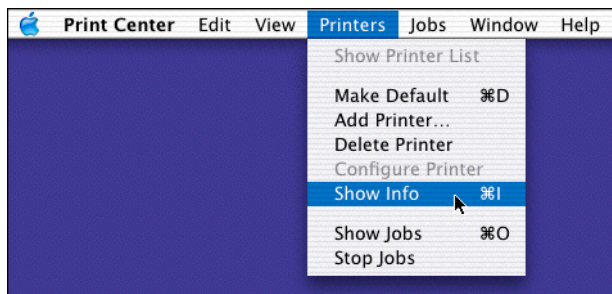
## 10 Click **Add**.

*The new printer appears in the **Printer List** screen.*

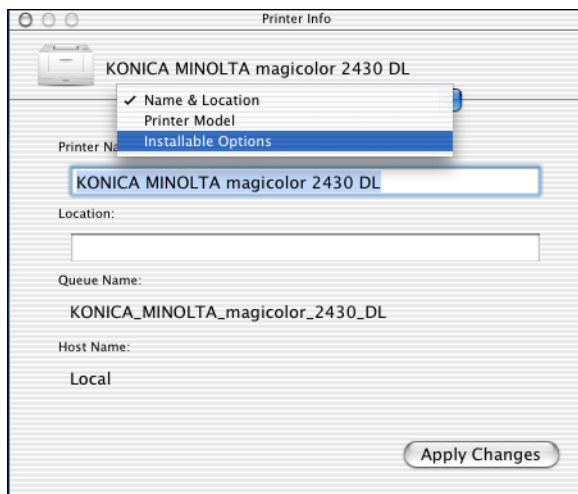


# Selecting Print Options

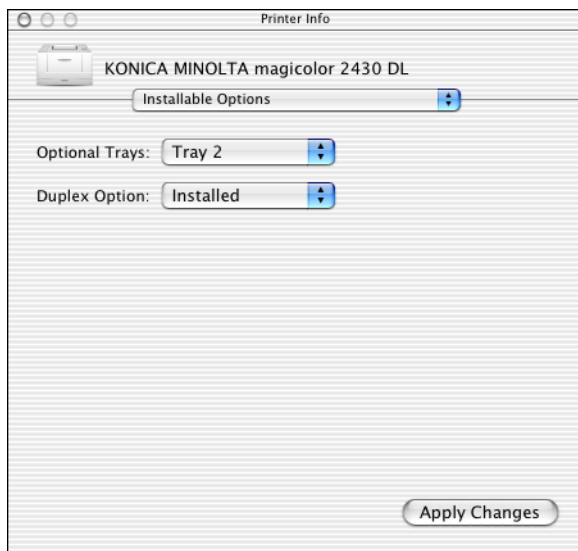
- 1 Open **Print Center**, which can be accessed by clicking Macintosh HD, then **Applications**, then **Utilities**.
- 2 Select this printer in the **Printer List**, and then select **Show Info** from the **Printers** menu.



- 3 Select **Installable Options** from the pop-up menu.



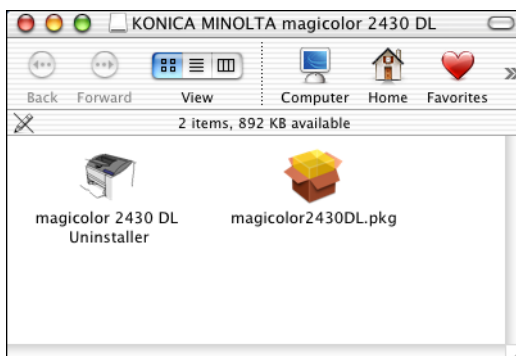
- 4 Select the **Optional Trays** and **Duplex Unit** pop-up menu to match your printer setup, and then click **Apply Changes**.



- 5 Close the **Printer Info** dialog box.

# Uninstalling the Printer Driver

- 1 Insert the magicolor 2430 DL Utilities & Documentation CD-ROM in the CD-R/DVD drive of your Macintosh.
- 2 Double-click the **magicolor2430DL-x.x.x-ppc.dmg** disk image file.  
*The disk image **KONICA MINOLTA magicolor 2430 DL** appears on the desktop.*
- 3 Double-click the **magicolor2430DL Uninstaller** file in the disk image.

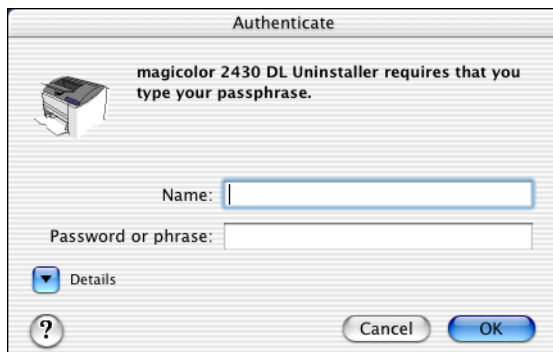


*The uninstaller for the printer driver starts up and the following message appears.*

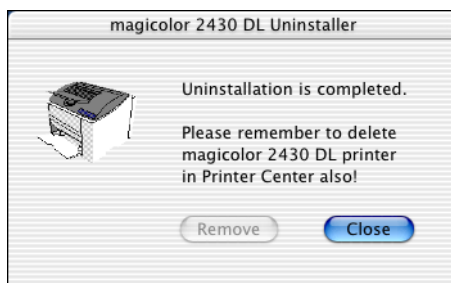


- 4 Click **Remove**.

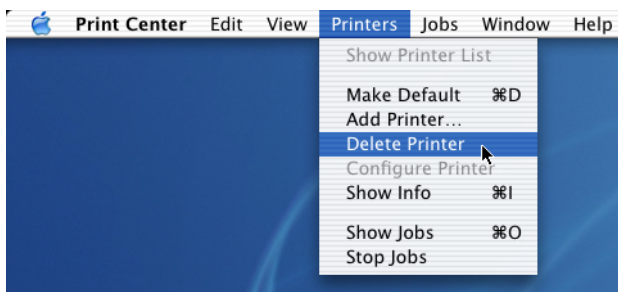
- 5 Enter the administrator user name and password in the Authenticate dialog box, and then click **OK**.



- 6 After the uninstallation has been completed, click **Close**.



- 7 Open **Print Center**, which can be accessed by clicking Macintosh HD, then **Applications**, then **Utilities**.
- 8 Select this printer in the **Printer List**, and then select **Delete Printer** from the **Printers** menu.

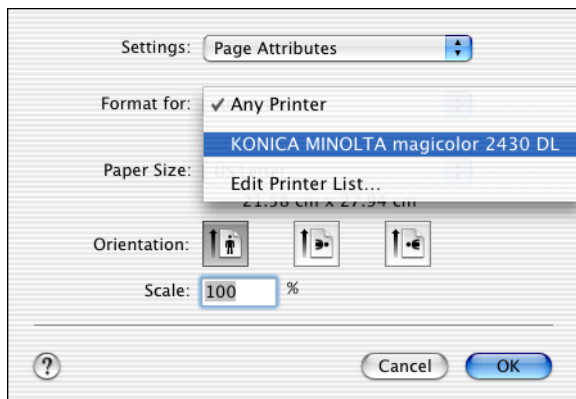


*This completes the uninstallation of the magicolor 2430 DL printer driver.*

# Specifying Page Setup Settings

The following dialog box appears when **Page Setup...** is selected from the **File** menu in the application being used.

- 1 Select **Page Setup...** from the **File** menu.  
The **Page Setup** dialog box appears.
- 2 Select this printer in the **Format for** pop-up menu.

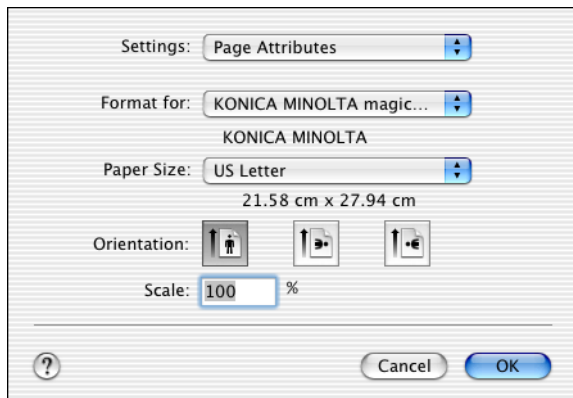


You can select the following sections from the **Settings** pop-up menu.

Section	Description
Page Attributes	This is used to specify the settings for the paper size, scaling, and print orientation.
Custom Paper Size	This is used to specify a custom paper size.
Summary	This is used to check the current settings.

## Page Attributes Options

The **Page Attributes** section is used to specify the settings for the paper size, scaling, and print orientation.



- **Paper Size**  
Select the desired paper size from the Paper Size pop-up menu.
- **Orientation**  
Select either a vertical or horizontal page orientation for printouts.
- **Scale**  
If you want to enlarge or reduce the size of the printout, enter the scale ratio here (1-400%)



*Regardless of which paper size is selected, the printer does not print within 0.157" (4 mm) of the edge of the paper.*

## Custom Paper Size Options

The **Custom Paper Size** section is used to specify the dimensions for a custom paper size.

Settings: Custom Paper Size

Untitled

New  
Duplicate  
Delete  
Save

Paper Size      Printer Margins

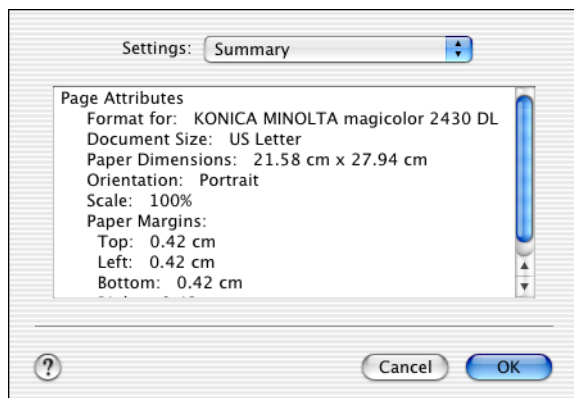
Height: 27.94 cm      Top: 0.63 cm  
Width: 21.59 cm      Left: 0.63 cm      Right: 0.63 cm  
Bottom: 1.41 cm

?      Cancel      OK

- **New**  
Click this button to create a new custom paper size.
- **Duplicate**  
Click this button to duplicate (copy) the settings of an existing custom paper size and create a new custom paper size based on those settings.
- **Delete**  
Click this button to delete a custom paper size.
- **Save**  
Click this button to save the settings for the selected custom paper size.
- **Paper Size**  
Enter the dimensions of the paper height and width for the custom paper size.  
**Height:** 5.19 - 14" (148 -356 mm)  
**Width:** 3.57 - 8.5" (92 - 216 mm)
- **Printer Margins**  
Enter the dimensions for the top, left, right, and bottom margins.

## Summary

The **Summary** is used to check the currently selected Page Attributes settings.

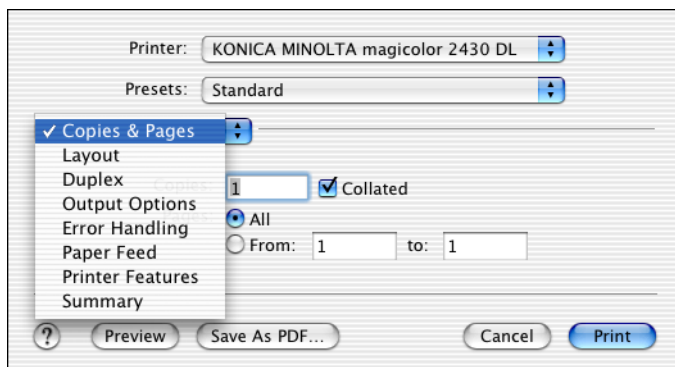


# Specifying Print Settings

The following dialog box appears when **Print...** is selected from the **File** menu in the application being used.

- 1 Select **Print...** from the **File** menu.  
The **Print** dialog box appears.
- 2 Select this printer in the **Printer** pop-up menu.  
The Print dialog box is used to specify the following print options.

## Print Dialog Box



Section	Description
Copies & Pages	This section contains options for the number of copies to be printed and the range of pages to print.
Layout	This section contains options for the number of pages per sheet of paper and other layout options when printing.
Duplex	This section contains options for printing on both sides of the paper and for the binding location.
Output Options	This section contains options for saving the print image as a file and for the format of saved data.
Error Handling	This section contains options for handling print errors.
Paper Feed	This section contains paper feed options.
Printer Features	This section contains options for color printing and watermark settings.
Summary	This is used to check the current settings.



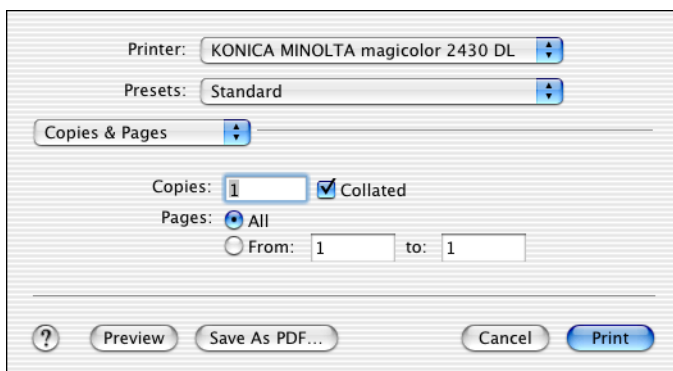
*No warning message will be displayed if options cannot be used together are selected.*

## Common buttons

- ? (Help button)  
This displays help information about the Print dialog box.
- Preview  
Click this button to view a preview image of the printout, to check that the print options are set correctly.
- Save As PDF...  
Click this button to save the print output as a PDF file.
- Cancel  
Click this button to close the Print dialog box without applying any of the settings.
- Print  
Click this button to print using the selected print options.

## Copies & Pages

The **Copies & Pages** section is used to specify the number of copies to print and the range of pages to print.

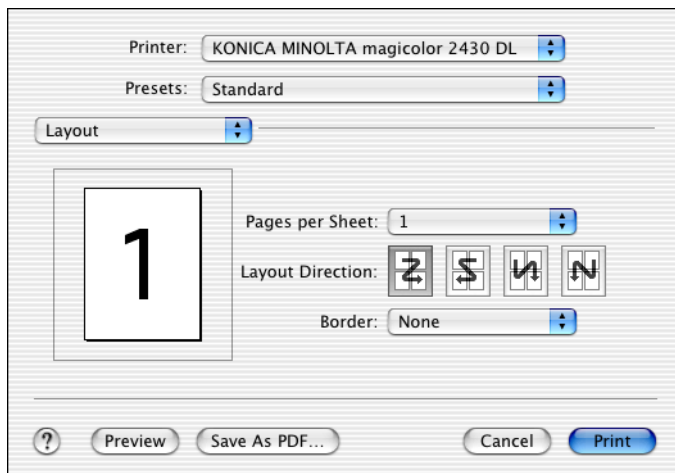


The screenshot shows the 'Copies & Pages' section of a print dialog box. At the top, 'Printer:' is set to 'KONICA MINOLTA magicolor 2430 DL' and 'Presets:' is set to 'Standard'. Below these is a tab labeled 'Copies & Pages'. Under this tab, 'Copies:' is set to '1' and the 'Collated' checkbox is checked. The 'Pages:' section has 'All' selected with a radio button. Below that, 'From:' is set to '1' and 'to:' is set to '1'. At the bottom of the dialog are buttons for '?', 'Preview', 'Save As PDF...', 'Cancel', and 'Print'.

- Copies  
This specifies the number of copies to be printed. If the **Collated** checkbox is selected, all pages in the documents are printed as sets of printouts.  
For example, if 5 is entered for **Copies** and **Collated** is selected, the document is printed five times from the first page to the last page.
- Pages  
**All:** Prints all pages in the document.  
**From, to:** Specifies the range of pages to be printed.

## Layout

The **Layout** section is used to specify the number of pages per sheet of paper and other layout options when printing.



- **Pages per Sheet**

Specifies the number of pages to be printed on one sheet of paper. For example, if **2** is selected, two pages are printed on one sheet of paper.

- **Layout Direction**

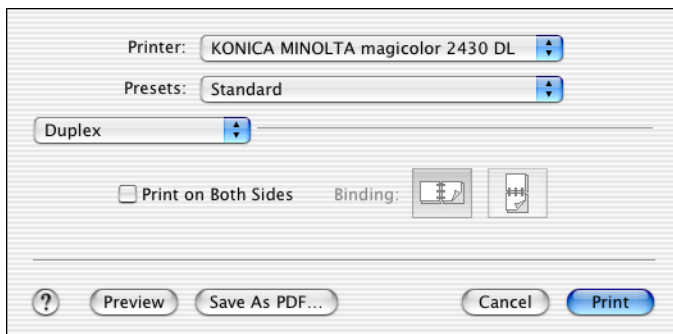
If you are printing more than one page per sheet, this specifies the direction and order the pages should be arranged on each sheet of paper.

- **Border**

This prints a border around the image for each of the pages printed on one sheet of paper when more than one page is printed on one sheet of paper.

## Duplex

The **Duplex** section is used to specify the options for printing on both sides of the paper when the Duplex Unit is installed in the printer.



### ■ Print on Both Sides

Select this option to print on both sides of the paper.

### ■ Binding

This is used to specify if the binding edge should be along the long edge or the short edge of the paper.

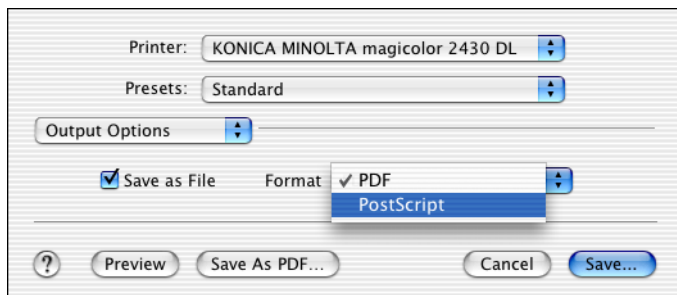


To print on both sides of the paper, **Duplex Unit** must be selected under **Installable Options** (p. 23).

The **Print on Both Sides** check box can be selected even when the **Duplex Unit** is not installed. However, in this case, the print job will be cancelled.

## Output Options

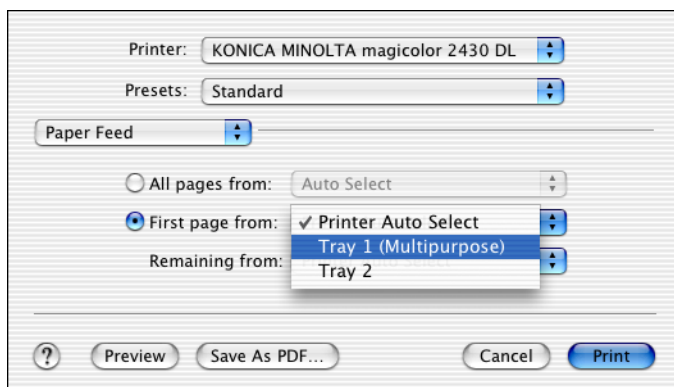
The **Output Options** section is used to specify whether or not to save the print output as a file, and the data format to use when saving the data.



- **Save as File**  
Select this option to save the print output as a file.
- **Format**  
Select the data format to be used when saving the print output as a file.

## Paper Feed

The **Paper Feed** section is used to specify the paper feed setting.



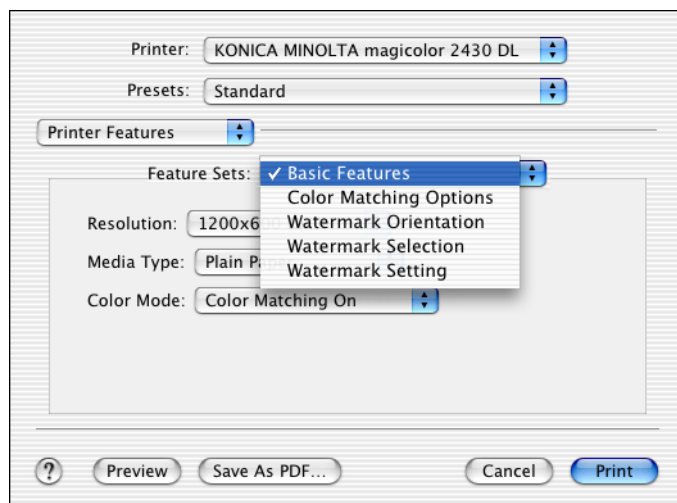
- All pages from  
All pages in the document are printed using the paper in the specified paper tray.
- First page from  
The first page of the document is printed on paper from a paper tray different from the tray used to print the rest of the document.
- Remaining from  
The rest of the document is printed from the specified paper tray when the first page is to be printed on paper from a different tray.



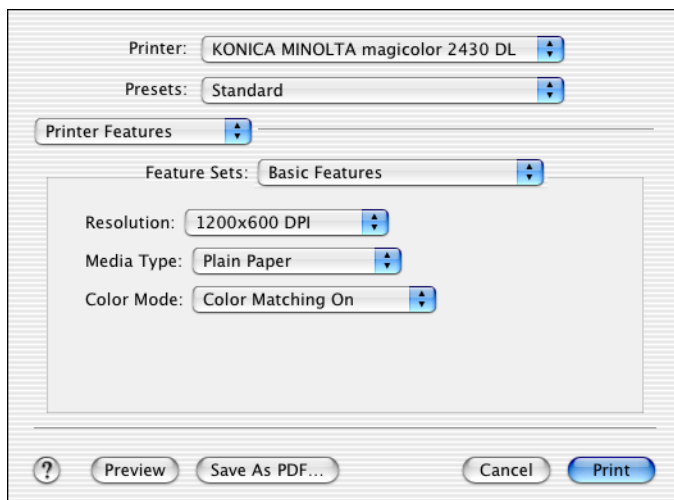
*If the optional trays is installed, select **Tray 2** under **Installable Options** (p. 23). If **Tray 2** is not selected, **Tray 2** appears in gray and cannot be selected.*

## Printer Features

The **Printer Features** section is used to specify the resolution, paper type, color options, watermark options etc., for the **Basic Features**, **Color Matching Options**, **Watermark Orientation**, **Watermark Selection**, and **Watermark Setting** feature sets.

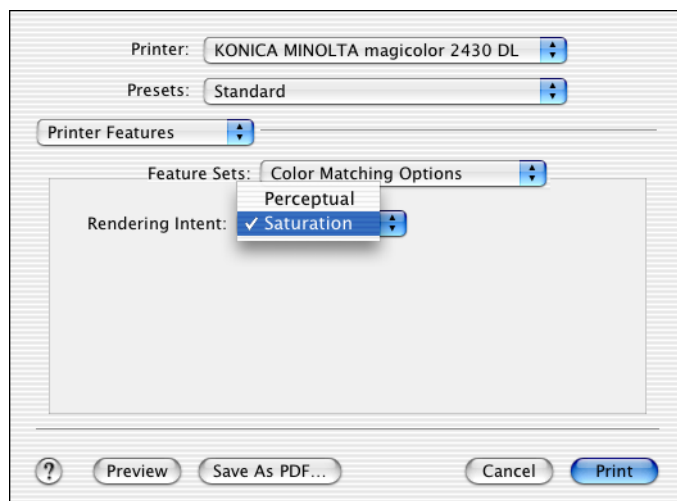


## Basic Features



- **Resolution**  
This option specifies the resolution to be used when printing a document.
- **Media Type**  
This option specifies the type of paper on which the print image will be printed.
- **Color Mode**  
This option specifies whether the document should be printed in color (Color Matching On / Color Matching Off) or grayscale.

## Color Matching Options



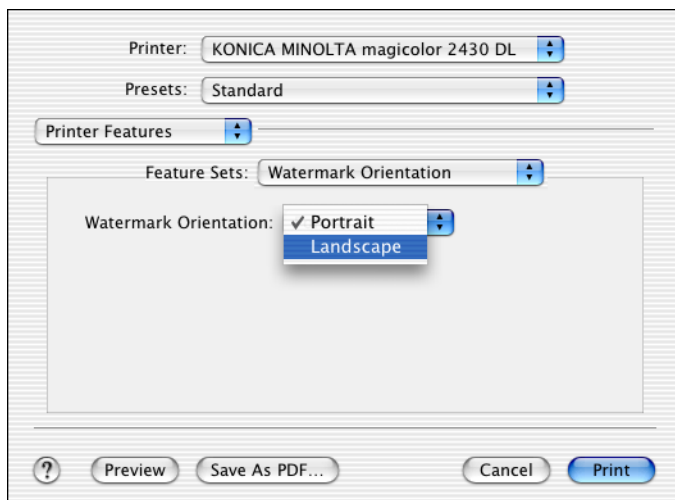
### ■ Rendering Intent

This option specifies the color matching settings.

**Perceptual:** Performs suitable color matching for photographic images.

**Saturation:** Performs suitable color matching for business graphics.

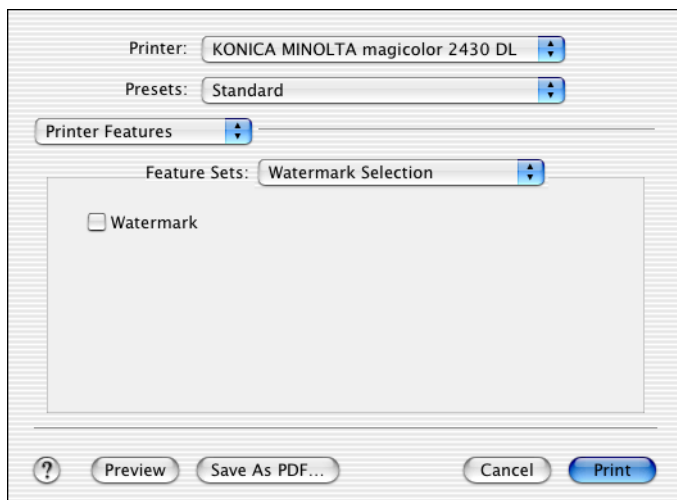
## Watermark Orientation



### ■ Watermark Orientation

This option specifies the direction of the text in a watermark.

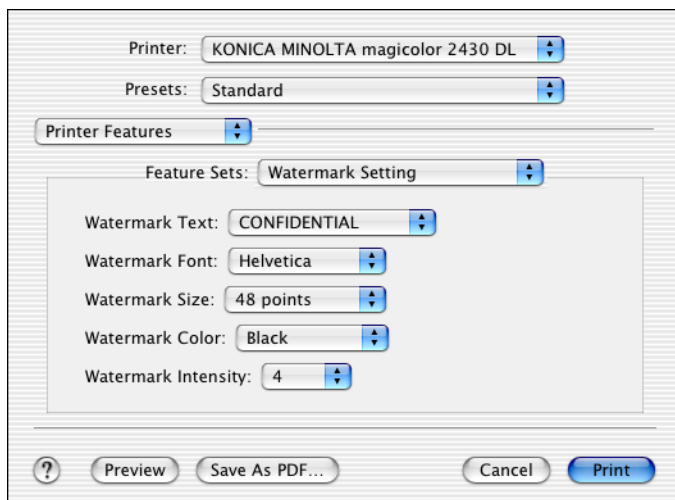
## Watermark Selection



### ■ Watermark

This specifies whether to use a watermark print.

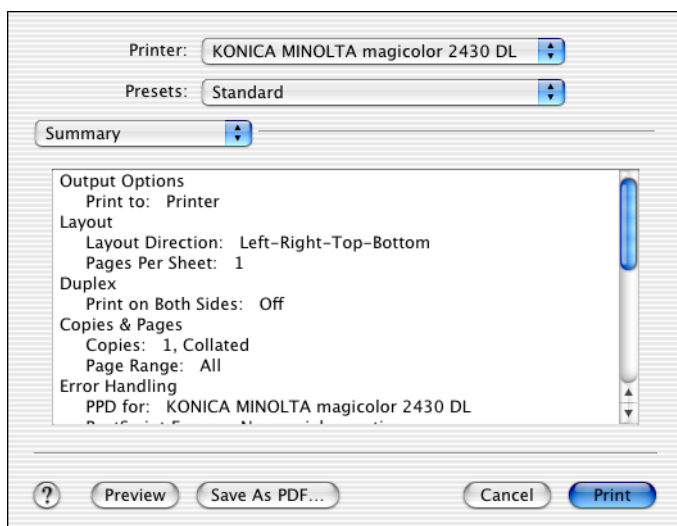
## Watermark Setting



- **Watermark Text**  
This specifies the text in the watermark.
- **Watermark Font**  
This specifies the font to be used for the text in the watermark.
- **Watermark Size**  
This specifies the font size to be used for the text in the watermark.
- **Watermark Color**  
This specifies the color of the text in the watermark.
- **Watermark Intensity**  
This specifies the density of text in the watermark.

## Summary

The **Summary** is used to check the currently selected print settings.



# Troubleshooting

Symptom	Solution
The setting in the saved presets are not applied.	Depending on the functions selected for the printer, some preset settings are not saved.
Media type error appears.	If a media type, such as "Transparency", is specified for Tray 2, a media type error appears and the printer stops. Be sure to specify a media type supported by Tray 2.
The printer stops responding.	Depending on the operating system, some paper size and paper type combinations are not permitted. If the job was sent with an incorrect combination of settings, the printer stops responding. Be sure to print with the correct combination of paper size and paper type settings.
The printer is not detected using Rendezvous.	Using Administrator mode in PageScope Web Connection, select the <b>Enable Rendezvous Service Discovery</b> check box on the <b>Rendezvous Configuration</b> page.
Checking the version number of the printer driver.	Click the <b>magicolor2430DL.pkg</b> icon in the <b>Receipts</b> folder (within <b>Library</b> ), and then select <b>Get Info</b> from the File menu.
The dialog box may appear unusual when selecting other manufacturer printer and back to magicolor.	Close the Print dialog box, and then open it again.
The custom paper size is different from the size that was set.	Depending on the operating system, the custom paper size settings may change slightly (for example, 5.80" may change to 5.79").
When printing 2 pages on a single sheet of paper, the pages are not centered on the paper.	Depending on the operating system, the pages are not centered on the paper when printing two pages on a single sheet of paper with the following paper sizes.  Legal, Letter Plus, Foolscap, Government Legal, Statement, Folio

Symptom	Solution
When printing multiple copies of multiple pages on a single sheet of paper with <b>Collated</b> selected, the pages are printed continuously.	When printing multiple copies of multiple pages on a single sheet of paper, <b>Collated</b> cannot be selected.
While printing from Acrobat Reader, the pages are not correctly collated or the print job is cancelled.	If a printing error occurs with Acrobat Reader, print using the preview feature provided by the operating system.

---

# *Operation on Linux*

# 2

# System Requirements for the Printer Driver

Before installing the printer driver, make sure that your system meets the following system requirements.

CPU	Intel IA-32
Operating systems	Red Hat Linux 8.0 or later, SuSE Linux 8.1 or later
Applications	OpenOffice 1.0.1 or later, KWord 1.2 or later
Connecting the computer and printer	USB connection, Network connection (10Base-T/10Base-TX)
RAM	More than OS recommendation
Network	LPR (queue: lp, LP, default, DEFAULT)
	AppSocket/HP JetDirect
Available hard disk space	256 MB or more



*This printer driver runs on a Linux system on which CUPS 1.1.15 or later has been installed.*



*As an example, the descriptions of the operations for Red Hat 8.0 are provided in this chapter.*

## Setting Up the Printing System



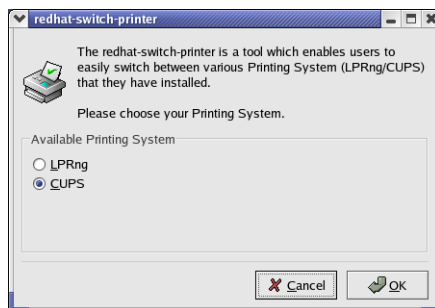
*This section describes the installation procedure under Red Hat Linux 8.0. This procedure is not required for installation under Red Hat Linux 9.0.*

- 1 From the Main Menu, click **Extras**, point to **System Settings**, and then click **Printer System Switcher**.

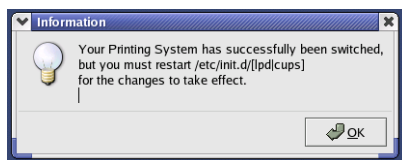


*If Red Hat Switch Printer is not installed on your computer, please install it.*

- 2 Select **CUPS**, and then click **OK**.



- 3 Click **OK**.



- 4 From the Main Menu, select **System Tools**, then **Terminal**.
- 5 Enter the following command `/etc/init.d/cups restart`.  
(It requires root privilege.)

# Installing the Printer Driver



*Before proceeding with the installation, be sure to exit all running applications.*

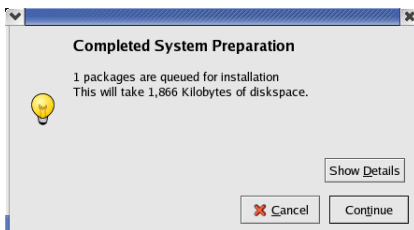
## Installing the Software from the Desktop

- 1 Copy the printer driver package from the CD-ROM to the desktop.
- 2 Double-click the printer driver package (on the desktop).



*Root privileges are required in order to install the driver.*

- 3 Click **Continue**.

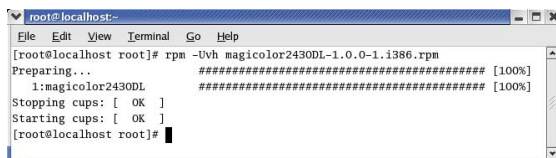


## Installing the Software from the Command Line

- 1 Copy the printer driver package from the CD-ROM to the desired folder on the computer.
- 2 From the Main Menu, select **System Tools**, then **Terminal**.
- 3 Enter the command "rpm -Uvh magicolor2430DL-x.x.x-x.i386.rpm".



*"x.x.x-x" represents the version number of the printer driver.*

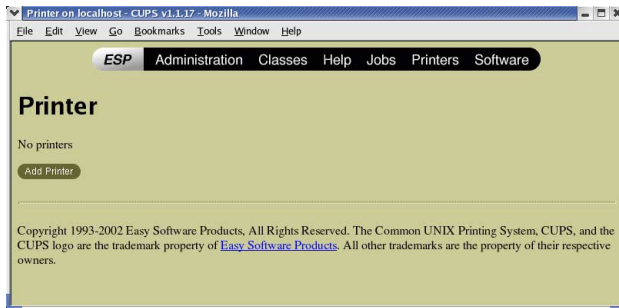


- 4 Quit Terminal.

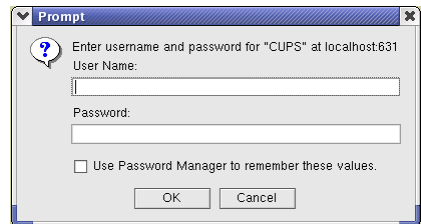
# Adding the Printer

## Adding the Printer from a Web Browser

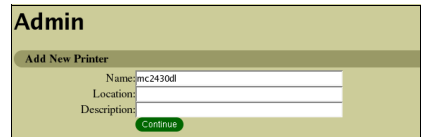
- 1 Start up the Web browser.
- 2 Enter the URL “http://localhost:631”, and then click **Manage Printers**.  
*The CUPS Administration Web page appears.*



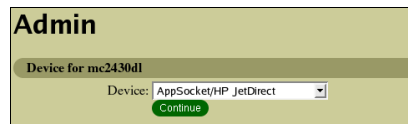
- 3 Click **Add Printer**.  
*A pop-up window appears.*



- 4 Enter the user name and password for using root privileges, and then click **OK**.
- 5 Enter the printer name, location, and description, and then click **Continue**.



- 6 Select **AppSocket/HP Jet-Direct**, and then click **Continue**.



- 7 Enter the device URI, and then click **Continue**.



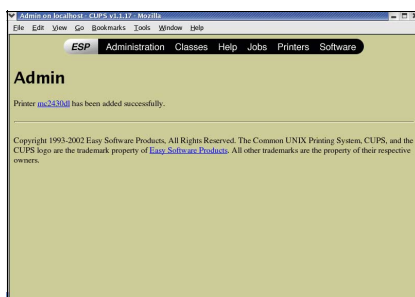
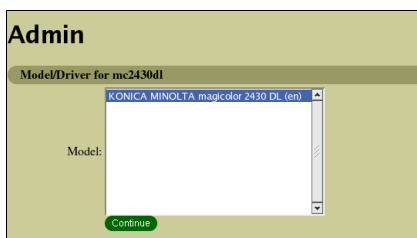
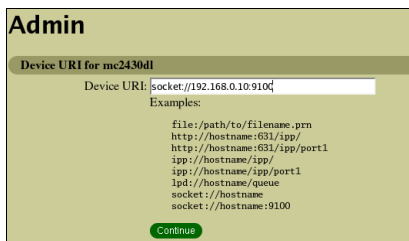
*Example:*

*socket://xxx.xxx.xxx.xxx  
(printer IP address):9100*

- 8 Select **KONICA MINOLTA**, click **Continue**.

- 9 Select **KONICA MINOLTA magicolor 2430 DL**, then click **Continue**.

The following message appears.



## Adding the Printer From the Command Line

- 1 From the Main Menu, select **System Tools**, then **Terminal**.
- 2 Enter the command “/usr/sbin/lpadmin -p [printer name] -E -v [device] -m ppd”.



### *Example*

```
/usr/sbin/lpadmin -p km2430dl -E -v socket://172.16.0.100 -m  
KONICA_MINOLTA/km2430dl_en.ppd.gz
```

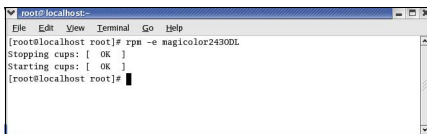
# Uninstalling the Printer Driver

- 1 From the Main Menu, select **System Tools**, then **Terminal**.



*Root privileges are required in order to uninstall the driver.*

- 2 Enter the command “rpm -e magicolor2430DL”.



```
root@localhost:~# rpm -e magicolor2430DL
Stopping cups: [ OK ]
Starting cups: [ OK ]
root@localhost:~#
```

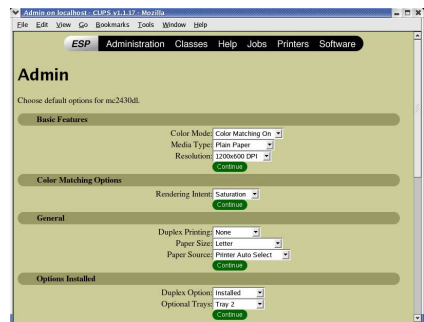
# Specifying Printer Driver Settings

## Displaying the Settings Page

- 1 Start up the Web browser.
- 2 Enter the URL “http://localhost:631”, and then click **Manage Printers**. *Printer on localhost.localdomain window appears.*



- 3 Click **Configure Printer**. *The printer driver settings page appears.*



# Printer Driver Settings

## Basic Features

Parameters	Settings
Color Mode	<p>Specifies the color mode to be used when printing.</p> <p><b>Color Matching On:</b> Prints after the printer driver converts the colors to match the tones in the computer screen.</p> <p><b>Color Matching Off:</b> Prints without the printer driver converting the colors.</p> <p><b>Grayscale:</b> Prints in grayscale.</p> <p>■ The default setting is <b>Color Matching On</b>.</p>
Media Type	<p>Specifies the media type as <b>Envelope, Glossy, Labels, Letterhead, Plain Paper, Postcard, Recycled Paper, Thick Stock, or Transparency</b>.</p> <p>■ The default setting is <b>Plain Paper</b>.</p>
Resolution	<p>Specifies the resolution as <b>600×600 DPI, 1200×600 DPI, or 2400×600 DPI</b>.</p> <p>■ The default setting is <b>1200×600 DPI</b>.</p>

## Color Matching Options

Parameters	Settings
Rendering Intent	<p>Specifies the color matching settings.</p> <p><b>Perceptual:</b> Performs suitable color matching for photographic images.</p> <p><b>Saturation:</b> Performs suitable color matching for business graphics.</p> <p>■ The default setting is <b>Saturation</b>.</p>

## General

Parameters	Settings
Duplex Printing	Specifies the duplex print binding position as <b>Long Side</b> , <b>None</b> , or <b>Short Side</b> .  ■ The default setting is <b>None</b> .
Paper Size	Specifies the paper size. An irregular paper size cannot be selected.
Paper Source	Specifies the paper source as <b>Printer Auto Select</b> , <b>Tray 1 (Multipurpose)</b> , <b>Tray 2</b> .  ■ The default setting is <b>Printer Auto Select</b> .  ■ <b>Tray 2</b> is only available if the setting is being specified from the Administration Web page.

## Options Installed

Parameters	Settings
Duplex Unit	Select <b>Installed</b> if the optional duplexing unit for the printer has been installed.  ■ The default setting is <b>Not Installed</b> .
Optional Trays	Select <b>Tray 2</b> if the optional trays for the printer has been installed.  ■ The default setting is <b>Not Installed</b> .

## Watermark Orientation

Parameters	Settings
Watermark Orientation	Specifies the orientation of the watermark as <b>Landscape</b> or <b>Portrait</b> .  ■ The default setting is <b>Portrait</b> .

## Watermark Selection

Parameters	Settings
Watermark-Overlay	Specifies the watermark function as <b>None</b> , <b>Overlay</b> , or <b>Watermark</b> .  ■ The default setting is <b>None</b> .

## Watermark Setting

Parameters	Settings
Watermark Color	Specifies the color for the text in the watermark as <b>Black</b> , <b>Blue</b> , <b>Cyan</b> , <b>Green</b> , <b>Magenta</b> or <b>Red</b> .  ■ The default setting is <b>Black</b> .
Watermark Font	Specifies the font to be used for the text in the watermark as <b>Bookman Light</b> , <b>Courier</b> , <b>Helvetica</b> , or <b>Times Roman</b> .  ■ The default setting is <b>Bookman Light</b> .
Watermark Intensity	Specifies the density for the watermark between <b>1</b> and <b>7</b> .  ■ The default setting is <b>4</b> .
Watermark Size	Specifies the fonts size for the text in the watermark as <b>24</b> , <b>30</b> , <b>36</b> , <b>42</b> , <b>48</b> , <b>54</b> , <b>60</b> , <b>66</b> , <b>72</b> , <b>78</b> , <b>84</b> , or <b>90 point</b> .  ■ The default setting is <b>48 point</b> .
Watermark Text	Specifies the text for the watermark as <b>CONFIDENTIAL</b> , <b>COPY</b> , <b>DO NOT COPY</b> , <b>DRAFT</b> , <b>FINAL</b> , <b>PROOF</b> , or <b>TOP SECRET</b> .  ■ The default setting is <b>CONFIDENTIAL</b> .

## Banners

Parameters	Settings
Starting Banner	Specifies the starting banner as <b>none</b> , <b>classified</b> , <b>confidential</b> , <b>secret</b> , <b>standard</b> , <b>topsecret</b> , or <b>unclassified</b> . ■ The default setting is <b>none</b> .
Ending Banner	Specifies the ending banner as <b>none</b> , <b>classified</b> , <b>confidential</b> , <b>secret</b> , <b>standard</b> , <b>topsecret</b> , or <b>unclassified</b> . ■ The default setting is <b>none</b> .

# Specifying Print Settings

The following dialog box appears when **Page Setup...** or **Print...** is selected from the **File** menu in the application being used.

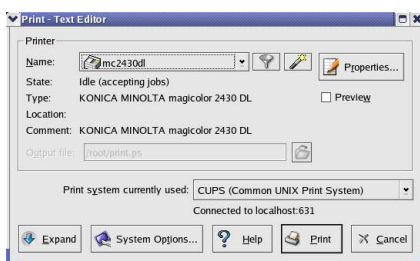
The contents and available options that appear in the print dialog box may vary depending on the application being used.

## KDE Print Dialog Box

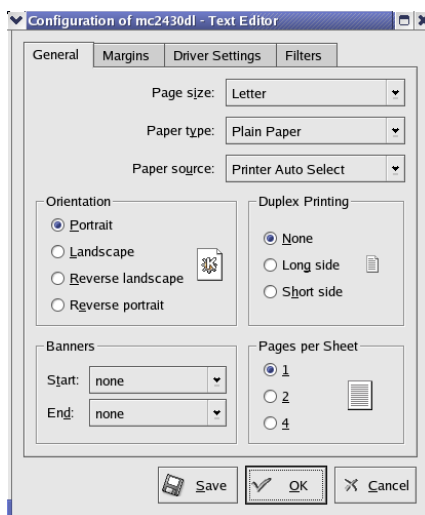
With KDE applications, the KDE print dialog box appears.

### Displaying the Print Settings Dialog Box

- 1 Click **Properties** in the print dialog box.



- 2 The magicolor 2430 DL settings dialog box appears.



- 3 If necessary, specify any of the various settings, and then click **OK**. The Print dialog box appears again.

## Print Settings

Tab	Description
General	This tab contains options for the paper size, media type, paper source, page orientation, duplex print, banner and layout options.
Driver Settings	This tab contains options for the driver settings.
Filters	This tab is not available with this printer.

### General tab

Parameters	Settings
Paper size*	Specifies the paper size. An irregular paper size cannot be selected.
Paper type	Specifies the paper type as <b>Envelope</b> , <b>Glossy</b> , <b>Labels</b> , <b>Letterhead</b> , <b>Plain Paper</b> , <b>Postcard</b> , <b>Recycled Paper</b> , <b>Thick Stock</b> , or <b>Transparency</b> .
Paper source**	Specifies the paper source as <b>Auto</b> , <b>Tray 1 (Multipurpose)</b> , or <b>Tray 2</b> .  ■ The default setting is <b>Tray 1 (Multipurpose)</b> .
Orientation	The setting for this parameter cannot be specified.
Duplex printing***	Specifies the duplex print binding position as <b>None</b> , <b>Long side</b> , or <b>Short side</b> .
Banners	Specifies the <b>Start</b> and <b>End</b> banner as <b>none</b> , <b>classified</b> , <b>confidential</b> , <b>secret</b> , <b>standard</b> , <b>top Secret</b> , or <b>unclassified</b> .  ■ The default setting is <b>none</b> .
Pages per sheet	Specifies the number of pages to be printed on one sheet as <b>1</b> , <b>2</b> , or <b>4</b> pages/sheet.

\* With Red Hat 8, the setting specified from the application is given priority. With Red Hat 9, the setting for the indicated parameter cannot be specified. Specify the setting for the parameter from the application.

\*\* Available only if **Optional Tray** is set to **Tray 2** under **Option Installed** on the CUPS Administration Web page.

\*\*\* Available only if **Duplex Unit** is set to **Installed** under **Option Installed** on the CUPS Administration Web page.

## Driver Settings tab

Parameters		Settings
Basic Features	Color Mode	<p>Specifies the color mode to be used when printing.</p> <p><b>Color Matching On:</b> Prints after the printer driver converts the colors to match the tones in the computer screen.</p> <p><b>Color Matching Off:</b> Prints without the printer driver converting the colors.</p> <p><b>Grayscale:</b> Prints in grayscale.</p> <p>■ The default setting is <b>Color Matching On</b>.</p>
	Media Type	<p>Specifies the media type as <b>Envelope, Glossy, Labels, Letterhead, Plain Paper, Postcard, Recycled Paper, Thick Stock, or Transparency</b>.</p> <p>The default setting is <b>Plain Paper</b>.</p>
	Resolution	<p>Specifies the resolution as <b>600×600 DPI, 1200×600 DPI, or 2400×600 DPI</b>.</p> <p>■ The default setting is <b>1200×600 DPI</b>.</p>
Color Matching Options	Rendering Intent	<p>Specifies the color matching settings.</p> <p><b>Perceptual:</b> Performs suitable color matching for photographic images.</p> <p><b>Saturation:</b> Performs suitable color matching for business graphics.</p> <p>■ The default setting is <b>Saturation</b>.</p>

Parameters		Settings
General	Duplex Printing***	Specifies the duplex print binding position as <b>Long side</b> , <b>None</b> , or <b>Short side</b> . ■ The default setting is <b>None</b> .
	Paper Size*	Specifies the paper size. An irregular paper size cannot be selected. Existing settings for the application take priority.
	Paper Source**	Specifies the paper source as <b>Auto</b> , <b>Tray 1 (Multipurpose)</b> , or <b>Tray 2</b> . ■ The default setting is <b>Tray 1 (Multipurpose)</b> .
Installable Options	Optional Duplex Unit	The setting for this parameter cannot be specified.
	Optional Trays	Specify the setting for this parameter from the CUPS Administration Web page.
Watermark Orientation	Watermark Orientation	Specifies the orientation of the watermark to <b>Landscape</b> or <b>Portrait</b> . ■ The default setting is <b>Portrait</b> .
Watermark Selection	Watermark-Overlay	Specifies the watermark function as <b>None</b> , <b>Overlay</b> , or <b>Watermark</b> . ■ The default setting is <b>None</b> .
Watermark Setting	Watermark Color	Specifies the color for the watermark as <b>Black</b> , <b>Blue</b> , <b>Cyan</b> , <b>Green</b> , <b>Magenta</b> , or <b>Red</b> . ■ The default setting is <b>Black</b> .
	Watermark Font	Specifies the font for the text in the watermark as <b>Bookman Light</b> , <b>Courier</b> , <b>Helvetica</b> , or <b>Times Roman</b> . ■ The default setting is <b>Bookman Light</b> .
	Watermark Intensity	Specifies the density for the watermark between <b>1</b> and <b>7</b> . ■ The default setting is <b>4</b> .

Parameters		Settings
Watermark Setting	Watermark Size	Specifies the font size for the text in the watermark as <b>24, 30, 36, 42, 48, 54, 60, 66, 72, 78, 84, or 90 point</b> . ■ The default setting is <b>48 point</b> .
	Watermark Text	Specifies the text for the watermark as <b>CONFIDENTIAL, COPY, DO NOT COPY, DRAFT, FINAL, PROOF, or TOP SECRET</b> . ■ The default setting is <b>CONFIDENTIAL</b> .

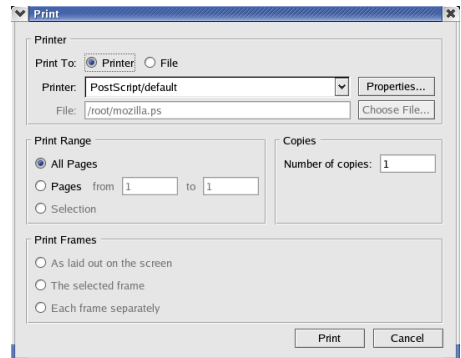
- \* With Red Hat 8, the setting specified from the application is given priority. With Red Hat 9, the setting for the indicated parameter cannot be specified. Specify the setting for the parameter from the application.
- \*\* Available only if **Optional Tray** is set to **Tray 2** under **Option Installed** on the CUPS Administration Web page.
- \*\*\* Available only if **Duplex Unit** is set to **Installed** under **Option Installed** on the CUPS Administration Web page.

## Print Dialog Box

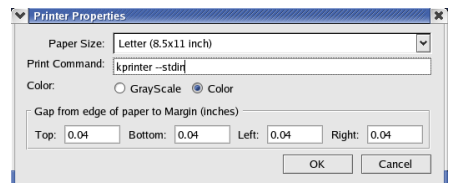
With applications other than KDE applications and OpenOffice, the following print dialog box appears.

### Displaying the Print Settings Dialog Box

- 1 Click **Properties** in the Print dialog box.

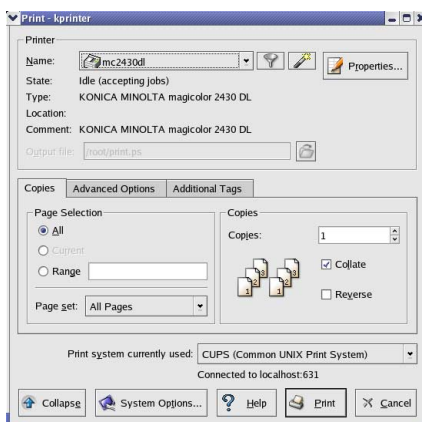


- 2 The Print Properties dialog box appears.

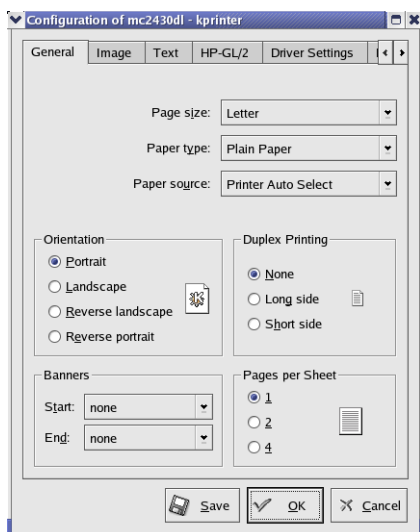


- 3 Enter the command "kprinter --stdin", and then click **OK**. The Print dialog box appears again.
- 4 Click **Print** in the Print dialog box. The kprinter Print dialog appears.

- 5 Click **Properties...** in the kprinter Print dialog box.



- 6 The magicolor 2430 DL settings dialog box appears.



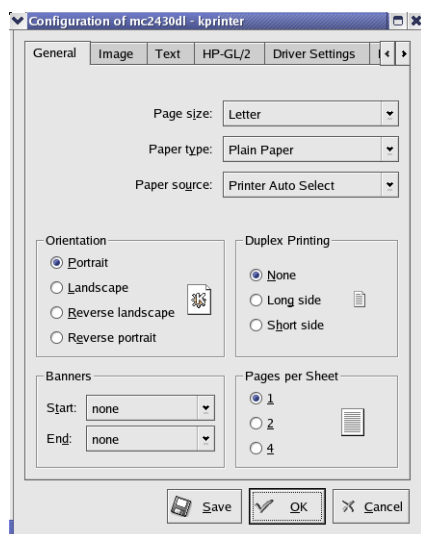
- 7 Click **OK** to print the document.  
For details on each of the settings, refer to page 61.

## Print Settings

Tab	Description
General	This tab contains options for the paper size, media type, paper source, page orientation, duplex print, banner and layout options.
Image	This tab is not relevant for this printer driver.
Text	This tab is not relevant for this printer driver.
HP-GL/2	This tab is not relevant for this printer driver.
Driver Settings	This tab contains options for the driver settings.
Filters	This tab is not available with this printer driver.

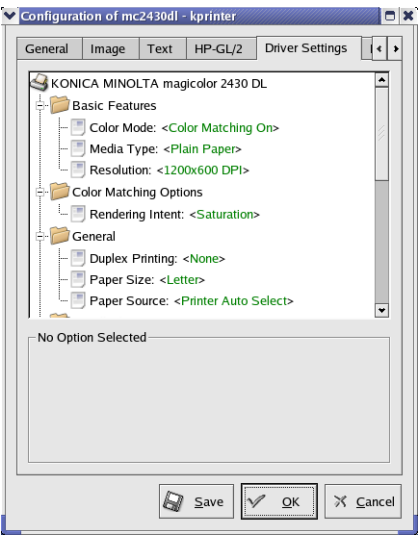
### General tab

This tab contains options for the paper size, media type, paper source, page orientation, duplex print, banner and layout options.



### Driver Settings tab

This tab contains options for the printer driver settings.

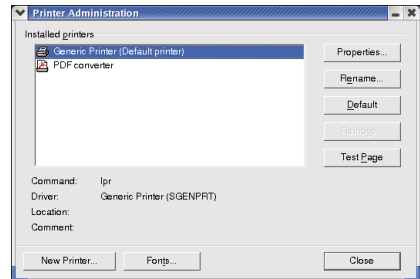


## Example Using OpenOffice

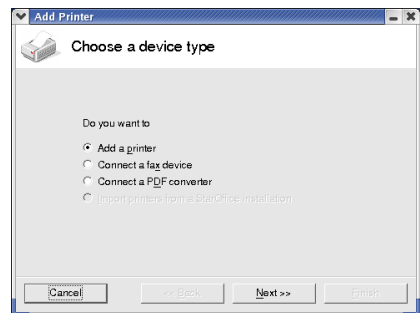


The procedure for printing on Red Hat 8 with OpenOffice 1.0.1 is described below. The following procedure or some steps may be different depending on the version of the operating system being used.

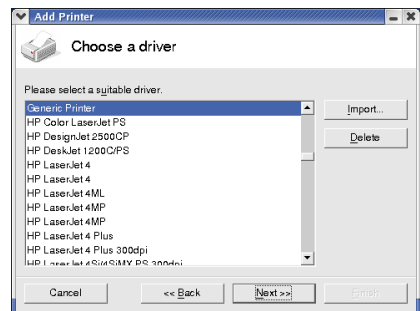
- 1 From the main menu, select **Office**, then **OpenOffice.org Printer Setup**. The printer Administration dialog box appears.



- 2 Click **New Printer**. The Add Printer dialog box appears.



- 3 Check that **Add a printer** is selected, and then click **Next**. The printer selection list appears.

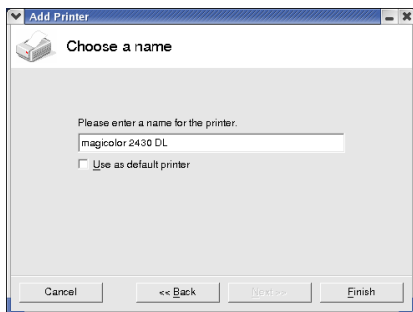


- 4 Select **Generic Printer**, and then click **Next**.

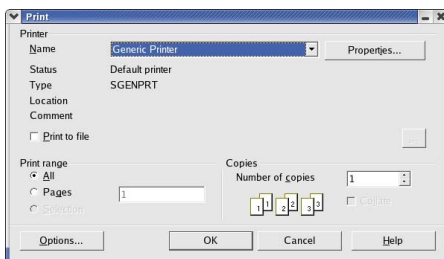
- 5 Enter “kprinter --stdin” in the command line, then click **Next**.



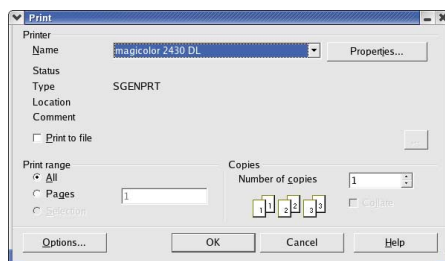
- 6 Change the printer name.



- 7 Click **Finish**. The Printer Administration dialog box appears again.
- 8 Click **Close**.
- 9 From the main menu, select **Office**, then **OpenOffice.org Writer**.
- 10 Click **Print** in the **File** menu. The *Print dialog box* appears.



- 11 Select the name of the printer specified in the **OpenOffice** printer settings.



- 12 Click **OK**.

*The kprinter Print dialog box appears.*

- 13 Click **Properties**, and then specify the desired paper settings.

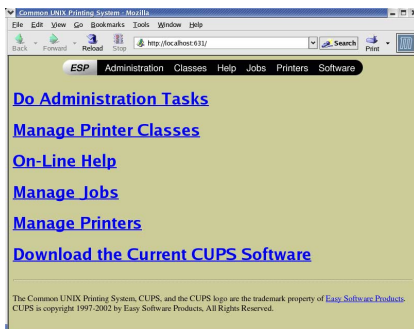


*When specifying the paper settings, be sure to set **Print system** currently used to **CUPS (Common Unit Print System)**.*

# Checking Print Jobs

You can check the status of print jobs from a Web browser.

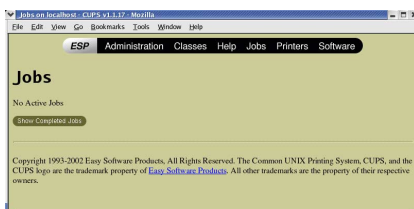
- 1 Start up the Web browser.
- 2 Enter the URL "http://localhost:631".  
*The CUPS Administration Web page appears.*



- 3 Click **Manage Jobs**.  
*A list of the currently active print jobs appear.*



*To check the status of completed print jobs, click **Show Complete Jobs**.*



# Troubleshooting

Symptom	Action
The printer stops because of a paper size error or a paper type error.	The job may have been sent with a prohibited combination of settings (for example, for the paper size and media type). Printing is not possible with postcards or overhead projector transparencies if <b>Plain Paper</b> is selected.
Printing does not continue with a custom paper size.	Printing with custom paper sizes is not possible directly from the printer driver. This can only be performed from the command line. Specify the following command to print data.  <code>lpr -P [printer_name] -o media=Custom. [WIDTHxLENGTH] [file_name]</code>  1. Format of Custom. [WIDTHxLENGTH]: Custom.150x200 mm, Custom.8x11 in, Custom.15x20 cm, or Custom.612x782 (postscript points)  2. The specified file must be a PS, PDF or JPEG file.
Printing cannot be completed correctly from OpenOffice or any other Office application (such as, Kword).	Applications running under Linux have their own print settings. Some of these functions may not be supported by this printer. Observe the following for best printing results.  ■ Settings made within the application: Paper size and orientation  ■ Settings made with the printer driver (kprinter): Settings other than those specified above (for example, paper type, tray, and resolution)
When printing from Acrobat Reader, part of the image is printed in solid black or the job is interrupted.	There is a compatibility problem between Ghostscript and Acrobat Reader. Try using a different PDF application.
Watermarks cannot be printed from Kword.	This is a bug with Kword. Use Overlay instead.



---

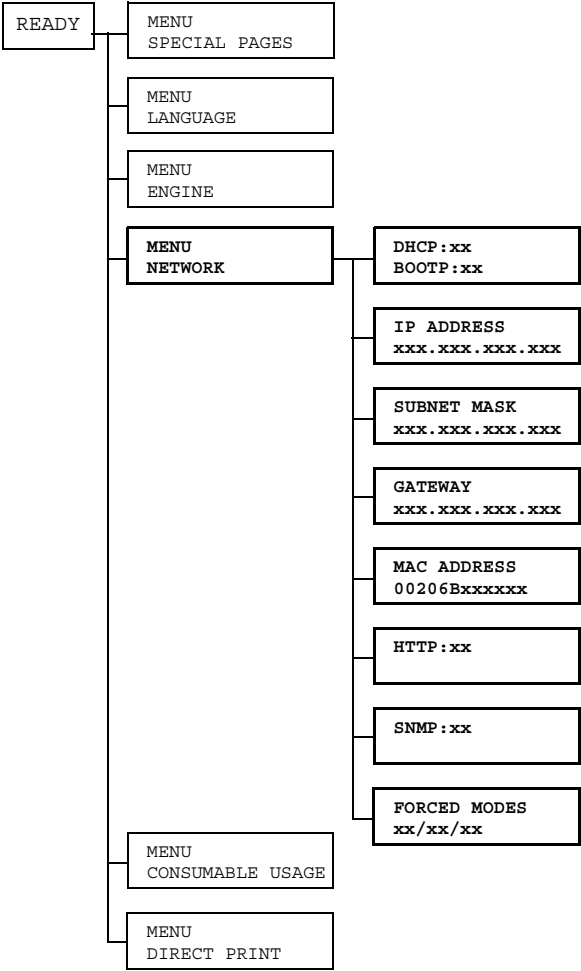
# ***Understanding the Network Configuration Menus***

---

# 3




# Network Menu

## Location within the Configuration Menu



## Accessing the Network Menu

Use the following series of keystrokes at the printer to access the Network menu options on your printer. This menu provides access to all of the configurable network items.

<b>Press this key . . .</b>	(until) the message window reads . . .
	READY
<b>Menu Select</b> 	SPECIAL PAGES
	MENU NETWORK
<b>Menu Select</b> 	

## Using the Network Menu Options

If the printer is connected to a network, the following settings should be specified. For details about each setting, contact your network administrator.



*When manually setting the IP address, Subnet Mask, and Gateway turn off DHCP and BOOTP first.*

### DHCP/BOOTP

<b>Purpose</b>	If there is a DHCP or BOOTP server on the network, specifies whether the IP address is automatically assigned by the DHCP or BOOTP server and other network information is loaded.
<b>Options</b>	DHCP SET: ON BOOTP SET: OFF  DHCP SET: OFF BOOTP SET: ON  DHCP SET: OFF BOOTP SET: OFF
<b>Default</b>	DHCP SET: ON, BOOTP SET: OFF

## IP Address

<b>Purpose</b>	Sets the IP address of this printer on the network.
<b>Range</b>	0–255 for each xxx triplet  Use the Up and Down keys to increase or decrease each number; use the Left and Right keys to move between triplets.
<b>Default</b>	192.168.1.2
<b>Notes</b>	Leading zeros of each triplet are automatically suppressed; for example, “001” displays as “1”

## Subnet Mask

<b>Purpose</b>	Sets the subnet mask value of the network. The subnet mask allows you to limit access to your printer (for example, according to departmental divisions).
<b>Range</b>	0–255 for each xxx triplet  Use the Up and Down keys to increase or decrease each number; use the Left and Right keys to move between triplets.
<b>Default</b>	255.255.255.0
<b>Notes</b>	Leading zeros of each triplet are automatically suppressed; for example, “000” displays as “0”

## Gateway

<b>Purpose</b>	Sets the address of the router/gateway if a router/gateway is used on your network and you allow users outside your network environment to print on your printer.
<b>Range</b>	0–255 for each xxx triplet  Use the Up and Down keys to increase or decrease each number; use the Left and Right keys to move between triplets.
<b>Default</b>	192.168.1.1
<b>Notes</b>	Leading zeros of each triplet are automatically suppressed; for example, “001” displays as “1”

## Mac Address

<b>Purpose</b>	Displays the Ethernet hardware address for this printer. It cannot be changed.
<b>Options</b>	None
<b>Default</b>	Printer dependent

## HTTP

<b>Purpose</b>	Enables or disables the printer's internal web page (see chapter 5, "Using PageScope Web Connection." ) When HTTP is set to "OFF", IP printing is not possible.
<b>Options</b>	HTTP SET: OFF, HTTP SET: ON
<b>Default</b>	HTTP SET: ON
<b>Notes</b>	In order for these settings to be applied, the printer must be turned off, then on again after the setting is specified.

## SNMP

<b>Purpose</b>	Enables or disables SNMP (Simple Network Management Protocol), a scalable, distributed management suite for managing small to large size networks.
<b>Options</b>	SNMP SET: OFF, SNMP SET: ON
<b>Default</b>	SNMP SET: ON
<b>Notes</b>	In order for these settings to be applied, the printer must be turned off, then on again after the setting is specified.

## Forced Modes

<b>Purpose</b>	Some network hubs will not communicate with printers that use a fixed network speed and structure. In such cases, use the new NETWORK/FORCED MODES menu to configure the printer for the appropriate hub settings and enable communication.
<b>Options</b>	AUTO/AUTO/ON, AUTO/FULL/ON, AUTO/HALF/ON, 100M/AUTO/ON, 100M/FULL/ON, 100M/FULL/OFF, 100M/HALF/ON, 100M/HALF/OFF, 10M/AUTO/ON, 10M/FULL/ON, 10M/FULL/OFF, 10M/HALF/ON, 10M/HALF/OFF
<b>Default</b>	AUTO/AUTO/ON

---

# ***Network Printing in a Windows Environment***

---

# **4**

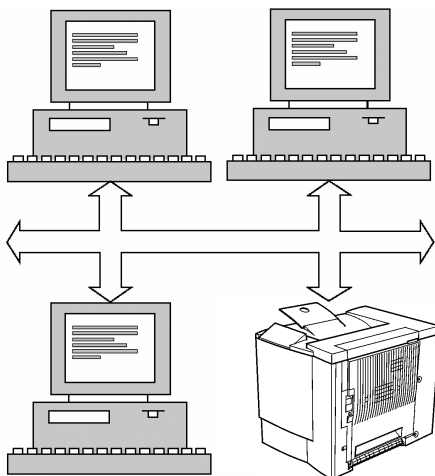
# Network Connection

## Theory

To connect your printer in a TCP/IP network environment, you must make sure that the internal network addresses in the printer have been set.



*In many cases, you have to enter only a unique IP address. However, you may also have to enter a subnet mask and/or a gateway (router) address, depending on your network configuration requirements.*



## Supported Environments

- Windows Server 2003/XP/2000/NT4.0/Me/98SE

# Making the Connection

## Ethernet Interface

An RJ45 connector can be used as the Ethernet interface for this printer.

When connecting your printer to an Ethernet network, the tasks you perform depend on how you plan to set the printer's IP (Internet Protocol) address. Printers are shipped with a preset IP address, subnet mask, and gateway.

- **IP Address**—A unique identifier for each device on a TCP/IP network.
- **Subnet Mask**—A filter used to determine what subnet an IP address belongs to.
- **Gateway**—A node on a network that serves as an entrance to another network.

Since the IP address for each PC and printer on your network must be unique, you usually need to modify this preset address so it doesn't conflict with any other IP address or your network or any attached network. You can do this in one of two ways. Each is explained in detail in the following sections.

- Using DHCP
- Setting the address manually

## Using DHCP

If your network supports DHCP (Dynamic Host Configuration Protocol), the printer's IP address will be automatically assigned by the DHCP server when you turn on the printer. (Refer to "Network Printing" on page 87 for a description of DHCP.)



*If your printer is not automatically assigned an IP address, verify that DHCP is enabled on the printer (SPECIAL PAGES/PRINT CONFIG PAGE). If it is not enabled, you can enable it in the NETWORK DHCP/BOOTP menu.*

- 1 Connect your printer to the network.  
*When using an Ethernet cable, plug the RJ45 connector into the Ethernet interface port of the printer.*
- 2 Turn on your PC and printer.
- 3 When the printer's message window displays **READY**, install the printer driver and utilities.

# Setting the Address Manually

You may also manually change the printer's IP address, subnet mask, and gateway by using the following instructions. (See chapter 3, "Understanding the Network Configuration Menus," for more information.)



*When manually setting the IP address, turn off DHCP and BOOTP first. In addition, when the IP address is changed, add a new port or reinstall the printer driver.*



## CAUTION

**You should always notify your network's administrator before changing the printer's IP address.**








- 1 Turn on your PC and printer.
- 2 When the printer's message window displays **READY**, set the IP address.

Press this key . . .	(until) the message window displays . . .
	READY
<b>Menu Select</b> ⏮	MENU SPECIAL PAGES
▶	MENU NETWORK
<b>Menu Select</b> ⏮	DHCP:OFF BOOTP:OFF
▶	IP ADDRESS 192.168.1.2
<b>Menu Select</b> ⏮	IP ADDRESS 192.168.1.2
Use the ▶ and ◀ keys to move to each of the four number triplets. (Leading zeros of each triplet are automatically suppressed; for example, ".001." displays as ".1.")	
Use the ▲ and ▼ keys to increase or decrease each number.	
<b>Menu Select</b> ⏮	IP ADDRESS xxx . xxx . xxx . xxx

### 3 If you don't want to set the subnet mask or gateway, go to step 5.








If you don't want to set the subnet mask, but you do want to set the gateway, go to step 4.

If you want to set the subnet mask, follow these steps.


Press this key ...	(until) the message window displays ...
	SUBNET MASK 255.255.255.0
<b>Menu Select</b> 	SUBNET MASK <u>2</u> 55.255.255.0
Use the  and  keys to move to each of the four number triplets. (Leading zeros of each triplet are automatically suppressed; for example, ".001." displays as ".1.")  Use the  and  keys to increase or decrease each number.	
<b>Menu Select</b> 	SUBNET MASK <u>x</u> xx.xxx.xxx.xxx

### 4 If you don't want to set the gateway, go to step 5.




If you want to set the gateway, follow these steps.

Press this key ...	(until) the message window displays ...
	GATEWAY 192.168.1.1
<b>Menu Select</b> 	GATEWAY <u>1</u> 92.168.1.1
Use the  and  keys to move to each of the four number triplets. (Leading zeros of each triplet are automatically suppressed; for example, ".001." displays as ".1.")  Use the  and  keys to increase or decrease each number.	
<b>Menu Select</b> 	GATEWAY xxx.xxx.xxx.xxx

- 5 Save your configuration changes and make the printer ready for printing again.

Press this key . . .	(until) the message window displays . . .
	Press the Up key twice to return to READY

- 6 Print a configuration page to verify that the correct IP address, subnet mask, and gateway have been set.

Press this key . . .	(until) the message window displays . . .
	READY
<b>Menu Select</b> 	MENU SPECIAL PAGES
<b>Menu Select</b> 	PRINT CONFIG PAGE
<b>Menu Select</b> 	

- 7 When the printer's message window displays READY, install the printer driver and utilities.

# Network Printing

The magicolor 2430 DL supports the following network protocols:

- BOOTP
- DHCP
- HTTP
- IPP
- LPD/LPR
- SLP
- SNMP
- TCP/IP

This chapter defines each of these protocols and then explains how to print via IPP.

## BOOTP

BOOTP (Bootstrap Protocol) is an Internet protocol that enables a diskless workstation to discover (1) its own IP address, (2) the IP address of a BOOTP server on the network, and (3) a file that can be loaded into memory to boot the workstation. This enables the workstation to boot without requiring a hard or floppy disk drive.

## DHCP

DHCP (Dynamic Host Configuration Protocol) is a protocol for assigning dynamic IP addresses to devices on a network. With dynamic addressing, a device can have a different IP address every time it connects to the network. In some systems, the device's IP address can even change while it is still connected. DHCP also supports a mix of static and dynamic IP addresses. Dynamic addressing simplifies network administration because the software keeps track of IP addresses rather than requiring an administrator to manage the task. This means that a new computer can be added to a network without the hassle of manually assigning it a unique IP address.

## HTTP

HTTP (HyperText Transfer Protocol) is the underlying protocol used by the World Wide Web. It defines how messages are formatted and transmitted, and what actions web servers and browsers should take in response to various commands. For example, when you enter a URL in your browser, this actually sends an HTTP command to the Web server directing it to fetch and transmit the requested web page.

## IPP

IPP (Internet Printing Protocol) is a protocol for end users' most common printing situations over the Internet. It allows users to find out about a printer's capabilities, submit print jobs to a printer, determine the status of the printer or print job, and cancel a previously submitted print job.

For more information on using IPP, See "Printing via IPP (Internet Printing Protocol) – Windows Server 2003/XP/2000" on page 90.

## LPD/LPR

LPD/LPR (Line Printer Daemon/Line Printer Request) is a platform-independent printing protocol that runs over TCP/IP. Originally implemented for BSD UNIX, its use has spread into the desktop world and is now an industry standard.

## SLP

Traditionally, in order to locate services on the network, users had to supply the host name or network address of the machine providing the desired service. This has created many administrative problems.

However, SLP (Service Location Protocol) simplifies the discovery and use of network resources such as printers by automating a number of network services. It provides a framework that allows networking applications to discover the existence, location, and configuration of networked services.

With SLP users no longer need to know the names of network hosts. Instead, they need to know only the description of the service they are interested in. Based on this description, SLP is able to return the URL of the desired service.

### Unicast, Multicast, and Broadcast

SLP is a unicast and a multicast protocol. This means that messages can be sent to one agent at a time (unicast) or to all agents (that are listening) at the same time (multicast). However, a multicast is not a broadcast. In theory, broadcast messages are "heard" by every node on the network. Multicast differs from broadcast because multicast messages are only "heard" by the nodes on the network that have "joined the multicast group."

For obvious reasons network routers filter almost all broadcast traffic. This means that broadcasts that are generated on one subnet will not be "routed" or forwarded to any of the other subnets connected to the router (from the router's perspective, a subnet is all machines connected to one of its ports). Multicasts, on the other hand, are forwarded by routers. Multicast traffic from a given group is forwarded by routers to all subnets that have at least one machine that is interested in receiving the multicast for that group.

## **SNMP**

SNMP (Simple Network Management Protocol) is actually a set of protocols for managing complex networks. SNMP works by sending messages to different parts of a network. SNMP-compliant devices, called agents, store data about themselves in Management Information Bases (MIBs) and return this data to the SNMP requesters.

## **TCP/IP**

Most networks combine TCP (Transmission Control Protocol) with the lower-level protocol IP (Internet Protocol). TCP establishes a virtual connection between two host systems and guarantees the delivery of data between them while IP specifies the format and addressing of this data sent between these two host systems.

# Printing via IPP (Internet Printing Protocol) – Windows Server 2003/XP/2000

## Adding an IPP Port

There are two ways to add an IPP port under Windows Server 2003/XP/2000: Using setup.exe or using the Add Printer wizard.

### Using setup.exe

Double-click setup.exe in the drivers\english\W2k-xp folder on the Utilities and Documentation CD-ROM. (Unless otherwise noted, all dialog boxes pictured here are taken from a Windows XP operating system.)

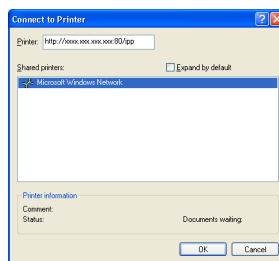
- 1 In the second dialog box select the **Network Printer** radio button and then choose **OK**.



- 2 In the Printer text box of the next dialog box enter the printer's network pathname in one of the following formats and then choose **OK**:

- `http://ipaddress:80/ipp`
- `http://ipaddress:631/ipp`

*If you enter an invalid pathname, the following error message displays (depending on your Windows operating system). Choose **OK** to return to the previous dialog box and then type a valid pathname.*

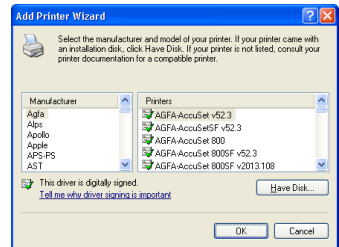


- **Windows Server 2003/XP**—“Windows cannot connect to the printer. Either the printer name was typed incorrectly, or the specified printer has lost its connection to the server. For more information, click **Help**.”
- **Windows 2000**—“Could not connect to the printer. You either entered a printer name that was incorrect or the specified printer is no longer connected to the server. Click **Help** for more information.”

### 3 Windows Server 2003/XP—Go to step 4.

**Windows 2000**—If you entered a valid path in the previous step, the following message displays: “The server on which the KONICA MINOLTA magicolor 2430 DL printer resides does not have the correct printer driver installed. If you want to install the driver on your local computer, click **OK**.” The reason for this is that you do not yet have a printer driver installed. Choose **OK**.

- 4 Choose **Have Disk**, locate the directory on the CD-ROM where the printer driver files are located (for example, drivers\english\W2k-xp), and then choose **OK**.



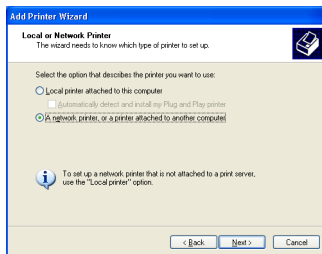
- 5 Finish installing the printer driver.

### Using the Add Printer Wizard

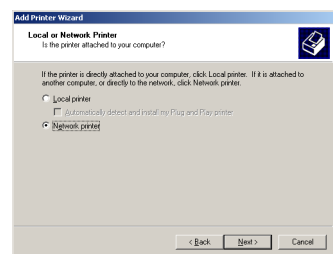
- For Windows Server 2003/XP: Click **Start**, select **Printers and Faxes**, and then click **Add Printer**.
- For Windows 2000: Click **Start**, point to **Settings**, click **Printers**, and then click **Add Printer**.

- 1 In the second dialog box select the **Network Printer** radio button and then choose **Next**.

#### Windows Server 2003/XP



#### Windows 2000



2 In the URL field in the next dialog box enter the printer's network path-name in one of the following formats and then choose **Next**:

- `http://ipaddress:80/ipp`
- `http://ipaddress:631/ipp`



The URI "`ipp://`" does not work in a Windows 2000 operating system.

### Windows Server 2003/XP

**Add Printer Wizard**

**Specify a Printer**  
If you don't know the name or address of the printer, you can search for a printer that meets your needs.

What printer do you want to connect to?

☐ Browse for a printer

☐ Connect to this printer (or to browse for a printer, select this option and click Next):

Name:

Example: \servername\printer

☒ Connect to a printer on the Internet or on a home or office network:

URL:

Example: http://server/printers/ipp/printer

< Back Next > Cancel

### Windows 2000

**Add Printer Wizard**

**Locate Your Printer**  
How do you want to locate your printer?

If you don't know the name of the printer, you can browse for one on the network.

What do you want to do?

☐ Type the printer name, or click Next to browse for a printer

Name:

☒ Connect to a printer on the Internet or on your Intranet

URL:

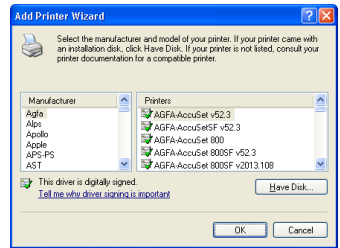
< Back Next > Cancel

- **Windows Server 2003/XP**—"Windows cannot connect to the printer. Either the printer name was typed incorrectly, or the specified printer has lost its connection to the server. For more information, click **Help**."
- **Windows 2000**—"Could not connect to the printer. You either entered a printer name that was incorrect or the specified printer is no longer connected to the server. Click **Help** for more information."

3 **Windows Server 2003/XP**—Go to step 4.

**Windows 2000**—If you entered a valid path in the previous step, the following message displays: "The server on which the KONICA MINOLTA magicolor 2430 DL printer resides does not have the correct printer driver installed. If you want to install the driver on your local computer, click **OK**." The reason for this is that you do not yet have a printer driver installed. Choose **OK**.

- 4 Choose **Have Disk**, locate the directory on the CD-ROM where the printer driver files are located (for example, drivers\english\W2k-xp), and then choose **OK**.



- 5 Finish installing the printer driver.



---

# ***Using PageScope Web Connection***

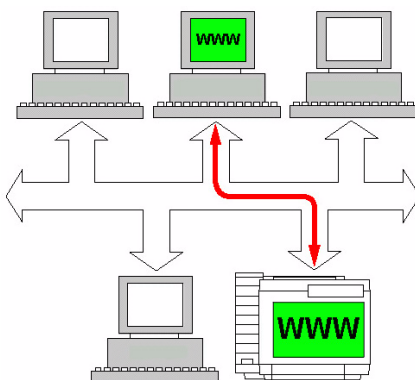
---

# 5

# About PageScope Web Connection

This chapter provides information on PageScope Web Connection, an HTTP (HyperText Transfer Protocol)-based web page that resides in your printer and that you can access using your Web browser.

This page gives you instant access to printer status and the most frequently used printer configuration options. Anyone on your network can access the printer using their web browser software. In addition, with the proper password, you can change the configuration of the printer without leaving your PC.



*Users who are not given passwords by the administrator can still view the configuration settings and options but are not able to save or apply changes.*

## Display Language

The language used in the PageScope Web Connection screens is specified from the printer's control panel. For details on specifying the display language, refer to the User's Guide (CD-ROM) provided with the printer.

## Requirements

To use PageScope Web Connection, the following is required:

- Windows Server 2003/XP/2000/Me/98SE/NT4.0, MacOS X, Linux
- Microsoft Internet Explorer version 5.5 or later  
Netscape Navigator version 7.1 or later  
Safari version 1.0 or later



*You do not need an Internet connection.*

- TCP/IP communication software (used by PageScope Web Connection) installed on your PC
- A network, to which both your PC and the printer are connected



*You cannot access PageScope Web Connection using a local (USB) connection. If your PC and printer are connected via a USB cable, use the Status Display.*

# Setting Up the Printer Web Page

Setting up the printer web page to run on your network involves two basic steps:

- Determining the name or address of your printer
- Setting up the “no proxy” preferences in your browser software

## Determining the Printer Name

The printer web page can be accessed in two ways:



*The printer names can also be determined via WINS if the network support it.*

- Through the assigned name of the printer—This name comes from the IP host table (the filename is **hosts**) on the computer system and is usually assigned by the system administrator (for example, magicolor 2430 DL). It may be more convenient for you to use the printer name than the IP address.

### **Location of the Host Table on the PC**

- Windows Server 2003/XP      \windows\system32\drivers\etc\hosts
  - Windows Me/98SE              \windows\hosts
  - Windows 2000/NT4.0          \winnt\system32\drivers\etc\hosts
- Through the printer's IP address—The IP address of your printer is a unique number and, therefore, may be the preferred identification to enter, especially if you have more printers active in your network. The printer's IP address is listed on the configuration page.

### **Location of the Configuration Page in the Printer's Configuration Menu**

- SPECIAL PAGES/PRINT CONFIG PAGE menu

## Setting Up Your Browser Software

Since your printer resides on your intranet and is not accessible beyond the firewall of your network, you must set up the proper “preferences” in your browser software. Your printer name or IP address must be added to the “no proxy” list in the preferences dialog box of the browser.



*You need to do this procedure only once.*

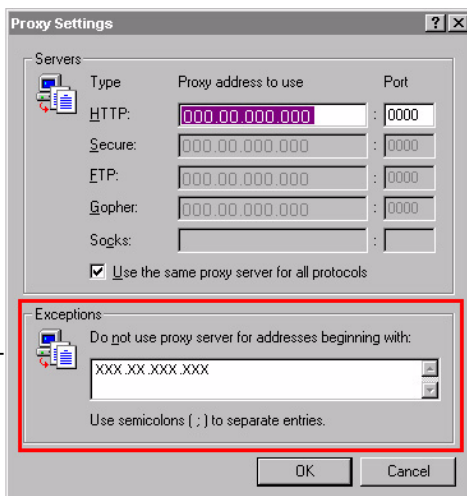
The sample screens below may be different from yours depending on software versions and operating systems in use.



Our examples represent the IP address of the printer with: xxx.xxx.xxx.xxx. Always enter your printer's IP address without leading zeros. For example, 192.168.001.002 should be entered as 192.168.1.2.

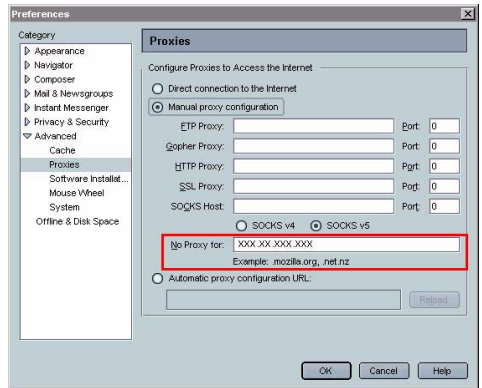
## Internet Explorer (version 6.0 for Windows)

- 1 Start Internet Explorer.
- 2 From the **Tools** menu choose **Internet Options**.
- 3 Select the **Connections** tab on the dialog box.
- 4 Choose the **LAN Settings** button to display the Local Area Network (LAN) Settings dialog box.
- 5 Select **Advanced** in Proxy server to open the Proxy Settings dialog box.
- 6 In the **Exceptions** text box, type a comma after the last entry and then type the printer name or the IP address of your printer.
- 7 Choose **OK** three times to return to the main browser window.
- 8 Enter the printer's IP address in the URL Address box to access the printer home page.



## Netscape Navigator (version 7.1)

- 1 Start Netscape Navigator.
- 2 From the **Edit** menu choose **Preferences**.
- 3 Select the **Advanced/Proxies** directory from the left pane of the dialog box.
- 4 Select the **Manual Proxy Configuration** radio button.
- 5 In the **No Proxy for:** text box, type a comma after the last entry, and then type the printer name or the IP address of your printer.
- 6 Choose **OK** to return to the main browser window.
- 7 Enter the printer name or IP address in the URL Location box to access the printer home page.



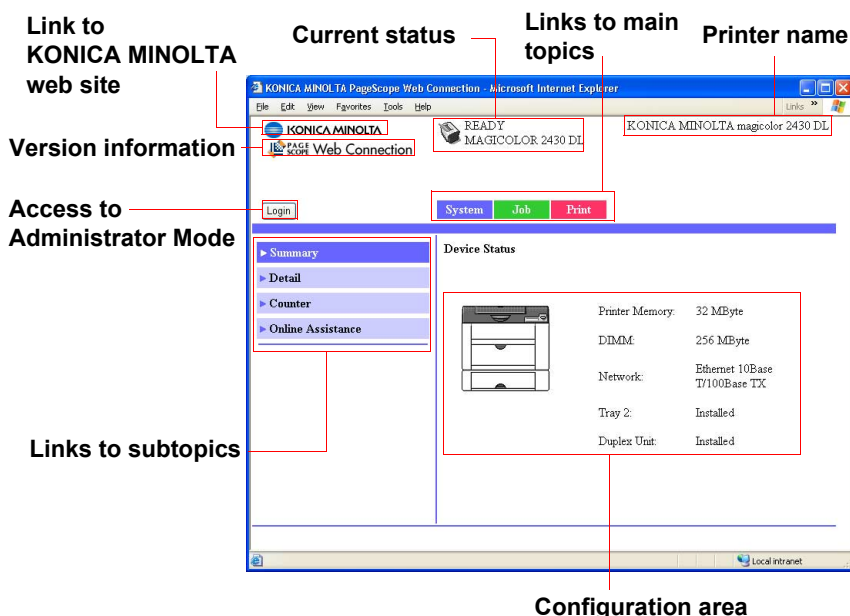
Bookmarks Location: http://192.168.1.2/

## Safari (version 1.1)

- 1 From the **Apple** menu, choose **Location**, and then click **Network preferences**.
- 2 Click the **Proxies** tab in the Network preferences dialog box.
- 3 In the **Bypass proxy settings for these Hosts & Domains** list, type in the name or IP address of the printer.
- 4 Click **Apply Now**.
- 5 In the URL address bar, type in the name or IP address of the printer to access the printer's Web page.

# Understanding the PageScope Web Connection Window

The illustration below identifies the navigation and configuration areas of the windows that you see in PageScope Web Connection windows.



## Navigation

Selecting the main topic and subtopic displays the configuration area for the printer options (parameters) associated with your selections.





To change a current setting, click on the current setting and then select from the available choices or enter the new value.



*In order to apply or save any changes made to the configuration settings, PageScope Web Connection must be logged in from Administrator Mode. (For details, refer to "Administrator Mode" on page 101.)*

## Current Status

The current status of the printer is displayed at the top of all PageScope Web Connection windows. The icon displays the type of status being displayed.

Icon	Status	Description	Examples
	Ready	The printer is online and either ready to print or printing.	READY WARMING UP PRINTING
	Attention	The printer needs attention, but printing continues.	TRAY 1 EMPTY C TONER LOW
	Fixable Error	The printer needs attention before printing can resume.	PUT MEDIA:TRAY 1 TONER EMPTY CYAN MEDIA JAM TRAY 2
	Fatal Error	The printer must be rebooted. If that doesn't fix the error, service is required.	ERROR AIDC SENSOR

## User Mode

You automatically enter User Mode whenever you enter PageScope Web Connection. In User Mode you can view configuration settings but not change them.

## Administrator Mode

In order to change any configuration settings through PageScope Web Connection, you must first enter Administrator Mode:

- 1 Choose the **Login** button.
- 2 Type the password in the **Admin Password** text box.



*The default password is "administrator". However, once you are in Administrator Mode, you can change this in the **System/Password** window.*

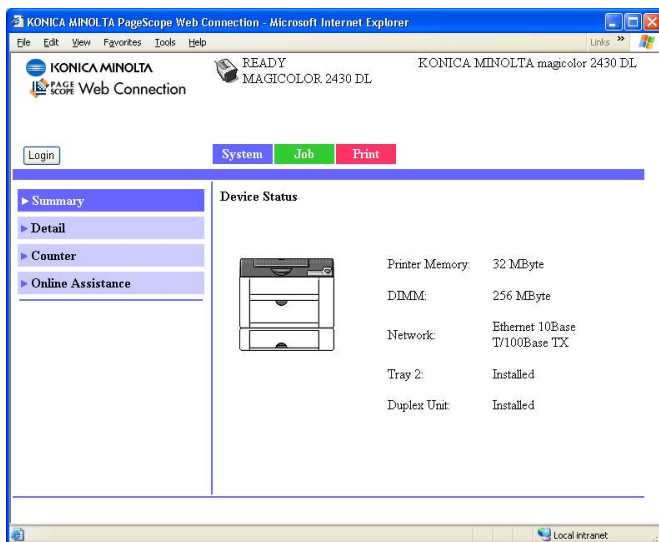
- 3 Choose the **Login** button.

*If you type an incorrect password, the following message displays:  
"Please log in again with a correct password." Retype the password.*

# Viewing Printer Status

## System Page


The System page is the starting point for all access to the printer's internal web pages. On this page you find printer status and current configuration settings, printer identification, and links to all other web pages.



*All of the information displayed on the System page is read only.*

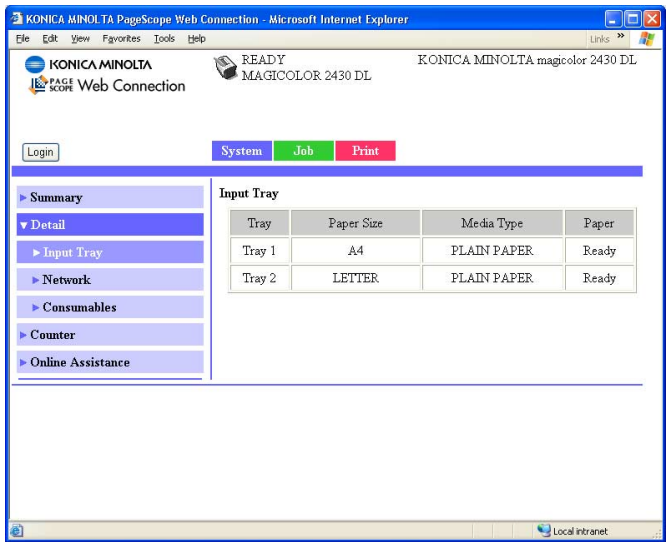
## Summary (shown above)

The **System/Summary** window provides the following information.

Item	Description
Printer name/status	<p>Shows the name assigned to your printer, and displays the current status of the printer—just as it's displayed on the printer's control panel message window.</p> <p> <i>The status display allows you to remotely identify possible printer problems, such as out of paper and out of toner.</i></p>
Device Status (Product image)	Identifies the type of printer that you are browsing. The printer is pictured in the illustration with all installed options.
Printer Memory	Displays the amount of memory installed in the printer.
DIMM	<p>If an optional DIMM is installed in the printer, displays the size of the DIMM.</p> <p>If no optional DIMM is installed in the printer, displays 0 MBytes.</p>
Network	Lists the installed printer interface (Ethernet 10 BaseT/100Base TX).
Tray 2	Identifies whether an optional lower feeder unit (Tray 2) is "Installed" or "Not Installed."
Duplex Unit	Identifies whether the duplex unit is "Installed" or "Not Installed."

# Details

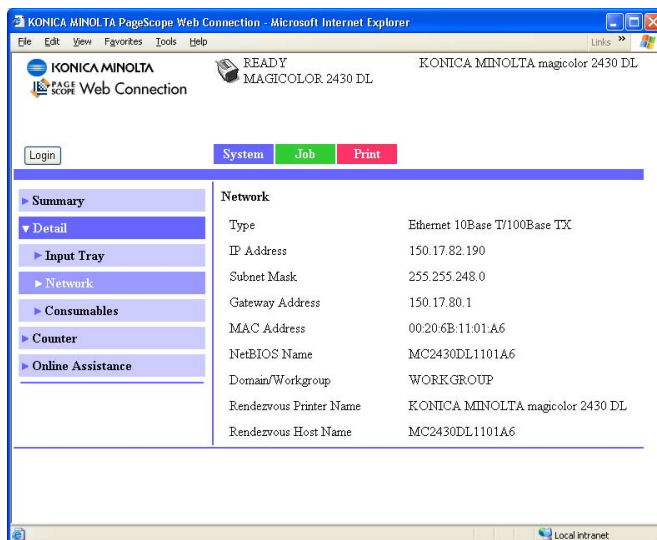
## Input Tray



The **System/Details/Input Tray** window provides the following information.

Item	Description
Tray	Identifies the paper feed units (Tray 1/2) installed on the printer.
Paper Size	Indicates the size of paper loaded in a specific tray.
Media Type	Indicates the type of paper loaded in a specific tray.
Paper	Indicates the paper status (“Ready” or “Empty”) for each tray.

## Network

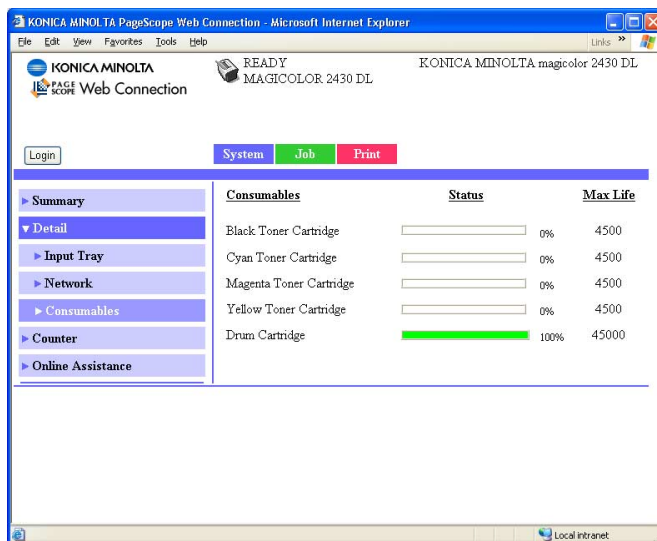


The **System/Details/Network** window provides the following information.

Item	Description
Type	Identifies the type of network interface installed on the printer (Ethernet 10Base T/100Base TX (IEEE802.11b)).
IP Address	Identifies the IP (Internet Protocol) address of the Ethernet interface.  The address can also be viewed on the operation control panel.
Subnet Mask	Identifies the subnet mask address of the Ethernet interface.  The address can also be viewed on the operation control panel.
Gateway Address	Identifies the gateway address of the Ethernet interface.  The address can also be viewed on the operation control panel.
MAC Address	Identifies the Media Access Control (MAC) address of the Ethernet interface.  The address can also be viewed on the operation control panel.
NetBIOS Name	Identifies the NetBIOS name for the printer.

<b>Item</b>	<b>Description</b>
Domain/ Workgroup	Identifies the domain and the workgroup name for the printer.
Rendezvous Printer Name	Identifies the printer name ("KONICA MINOLTA magi-color 2430DL").
Rendezvous Host Name	Identifies the host name for the printer.

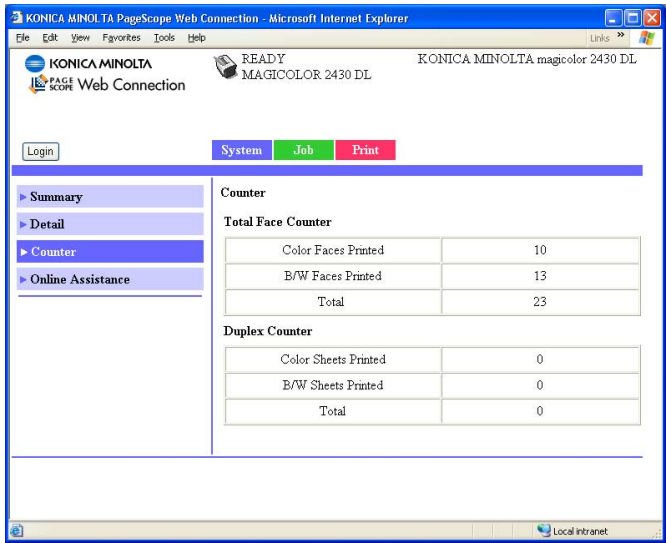
## Consumables



The **System/Details/Consumables** window provides the following information:

Item	Description
Consumables	Identifies the type of consumable that is being monitored.
Status	Indicates the remaining life of the consumables <ul style="list-style-type: none"><li>■ Toner Cartridge: Percentage</li><li>■ Drum Cartridge: Percentage</li></ul>
Max. Life	Identifies the maximum life expectancy of the toner cartridge in sheets of media.

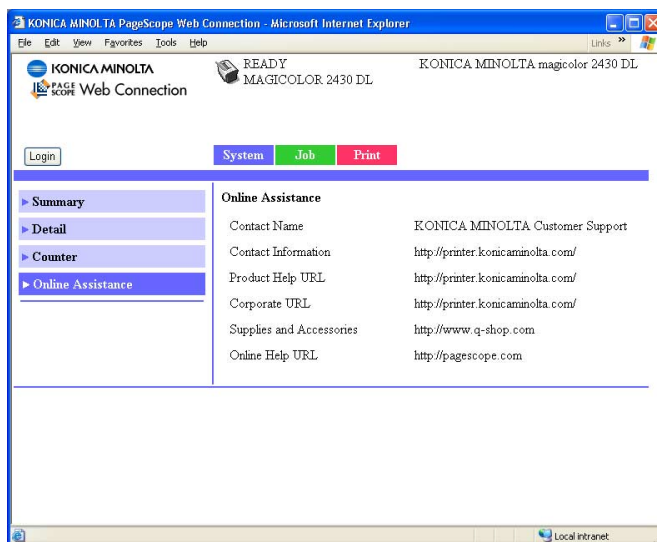
# Counter



The **System/Counter** window provides the following information:

Item	Description
Total Face Counter	Indicates the number of single-sided prints (in color, in black and white, and the total amount).
Duplex Counter	Indicates the number of double-sided prints (in color, in black and white, and the total amount).

## Online Assistance

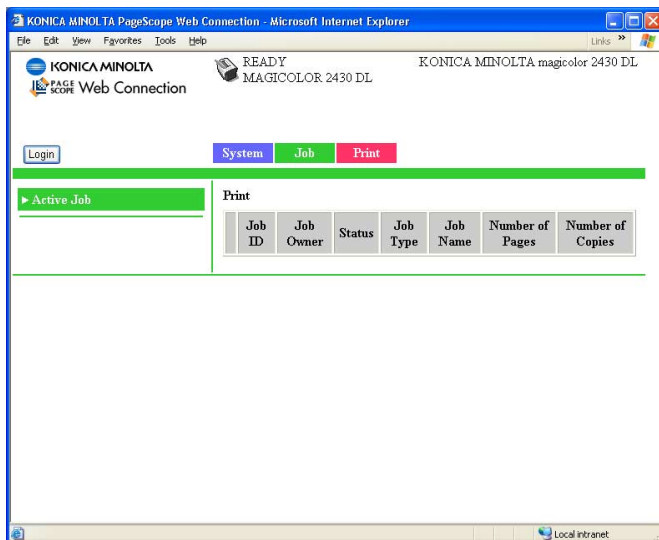


The **System/Online Assistance** window provides the following information:

Item	Description
Contact Name	Identifies the organization that provides assistance with the printer.
Contact Information	Identifies the web address for assistance.
Product Help URL	Identifies the web address for assistance.
Corporate URL	Identifies the KONICA MINOLTA web address.
Supplies and Accessories	Identifies the web address where you can order printer supplies and accessories.
Online Help URL	Identifies the Web address for on-line assistance.

## Job Page

This page allows you to view the status of current print jobs.



### Active Job (shown above)

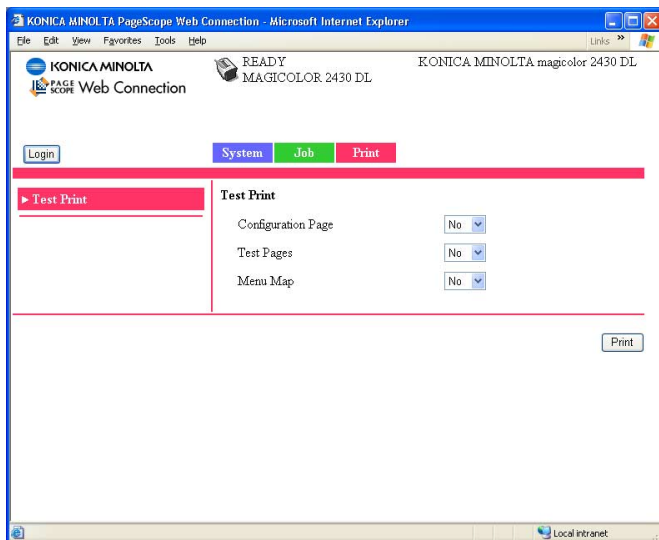
The **Job/Active Job** window provides the following information for up to ten print jobs:

Item	Description
Job ID	Displays the print job identification number. Each print job that the printer receives is assigned a unique identification number.
Job Owner	If known, displays the owner of the print job.
Status	Displays the current status of the print job (Printing, Receiving, Waiting, or Cancelling).
Job Type	Displays the type of print job (Normal Print or IPP Print). For more information on IPP (Internet Printing Protocol), see chapter 4, "Network Printing in a Windows Environment."
Job Name	Displays the name of the print job.
Number of Pages	Displays the number of pages in the print job.
Number of Copies	Displays the number of copies of the print job requested.

Item	Description
Next > button	If more than five print jobs are queued to print, moves you from the first to the second Active Jobs window.
< Previous button	If more than five print jobs are queued to print, moves you from the second to the first Active Jobs window.
Delete Selected Job button	Deletes the print job(s) whose check boxes in column 1 are checked.

## Print Page

This page allows you to print pages that provide various information about the printer.



### Test Print (shown above)

The **Print/Test Print** window provides the following information:

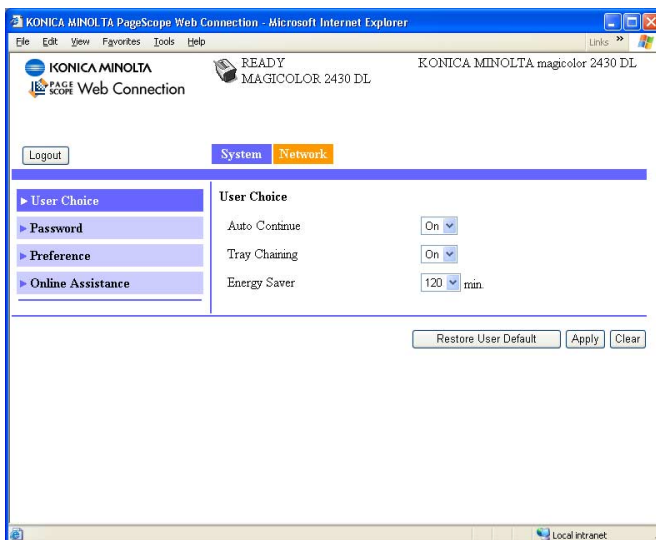
Item	Description
Configuration Page	Allows you to print a printer configuration page, which lists the printer's configuration settings, by choosing "Yes", and then clicking <b>Print</b> button.
Test Pages	Allows you to print a printer test page by choosing "Yes", and then clicking <b>Print</b> button.
Menu Map	Allows you to print a printer menu map, which displays the printer's configuration menus, by choosing "Yes", and then clicking <b>Print</b> button.
Print button	Sends the page to the printer.

# Configuring the Printer

In order to make any configuration changes through PageScope Web Connection, you must first enter Administrator Mode. See “Administrator Mode” on page 101 for instructions on logging into Administrator Mode.

## System Page




This page allows you to configure several user- and printer-specific items.



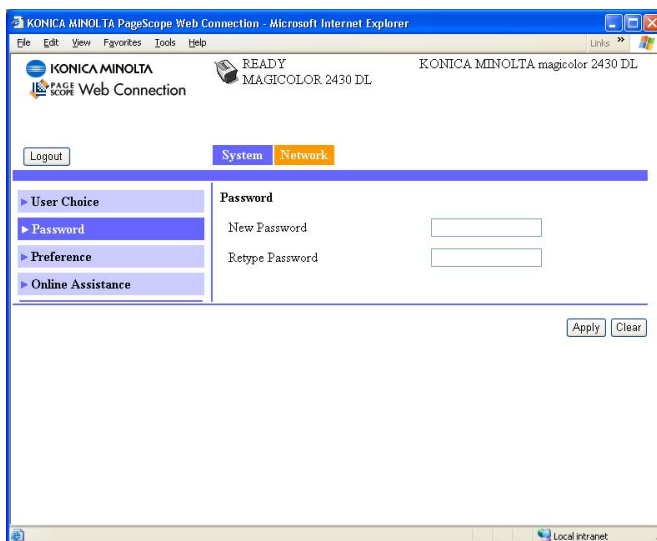
### User Choice (shown above)

The **System/User Choice** window allows you to configure the following items:



Item	Description
AutoContinue	<p>Specifies whether the printer should continue printing if the correct media size is not loaded in the specified tray.</p> <p>Choices: Off, On Default: On</p> <p>Configuration Menu Equivalent: ENGINE/AUTO CONTINUE</p>

Item	Description
Tray Chaining	<p>Specifies whether the printer should switch to a different tray (containing media of the same size and type of media) and then continue printing if the specified tray runs out of media.</p> <p>Choices: Off, On Default: On</p> <p>Configuration Menu Equivalent: ENGINE/TRAY CHAINING</p> <p> <i>This option is available only if the optional lower feeder unit (Tray 2) is installed.</i></p>
Energy Saver	<p>Sets the amount of time (in minutes) the printer waits between print jobs before activating the Energy Saver feature.</p> <p>Choices: 15, 30, 60, 120 Default: 30</p> <p>Configuration Menu Equivalent: ENGINE/ENERGY SAVER</p> <p> <i>Only <b>120</b> is available on the model for North America.</i></p> <p> <i>When the Energy Saver setting in the Preference is off, the drop-down list box is disabled and gray out.</i></p>
Restore User Default button	<p>Resets all Administrator Mode configuration settings to their factory defaults.</p> <p>Configuration Menu Equivalent: ENGINE/ENGINE SERVICE/RESTORE USER DEFAULT</p>
Apply button	Applies the configuration settings for this window.
Clear button	Resets all configuration settings for this window to their user defaults.
Logout button	Logs out of Administrator Mode and returns to User Mode.

## Password



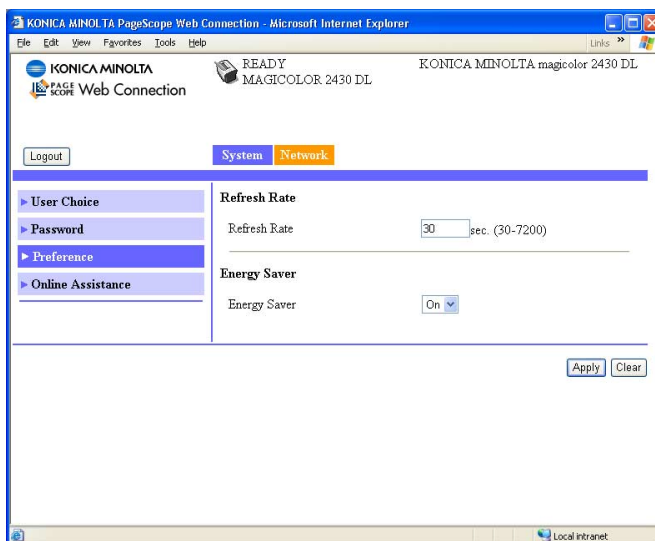
The **System/Password** window allows you to configure the following items:

Item	Description
New Password	Sets a new password to enter Administrator Mode.  Passwords can be set to any string of numbers and letters (uppercase and lowercase) between 6 and 16 characters in length.
Retype Password	Verifies the new password typed in the <b>New Password</b> text box.  If the password typed in both text boxes doesn't match, the following message displays when you choose the <b>Apply</b> button: "Please retype the correct password." Click <b>OK</b> button, and then retype the passwords in both text boxes.
Apply button	Applies the configuration settings for this window.
Clear button	Resets all configuration settings for this window to their user defaults.
Logout button	Logs out of Administrator Mode and returns to User Mode.



*If you forget the new password you've assigned, use the printer's ENGINE/ENGINE SERVICE/RESTORE USER DEFAULT menu to reset the password (and all other configuration choices) to administrator.*

## Preference



The **System/Preference** window allows you to configure the following items:

Item	Description
Refresh Rate	<p>Sets the time interval (in seconds) that passes before the screen automatically updates. During a screen refresh, the printer is polled for any new information or status, and all of the fields in the PageScope Web Connection windows are updated.</p> <p>Range: 30–7200 (0.5–12 minutes) Default: 30</p> <ul style="list-style-type: none"> <li>■ If less than 30 seconds is specified, the setting changes to 30 seconds.</li> <li>■ If more than 7200 seconds is specified, the setting changes to 7200 seconds.</li> </ul>
Energy Saver	<p>Sets whether or not to use the Energy Saver feature specified in the <b>System/User Choice</b> window.</p> <p>Choices: On, Off Default: On Configuration Menu Equivalent: ENGINE/ENGINE SERVICE/ENERGY SAVER</p>
Apply button	Applies the configuration settings for this window.

Item	Description
Clear button	Resets all configuration settings for this window to their user defaults.
Logout button	Logs out of Administrator Mode and returns to User Mode.

## Online Assistance



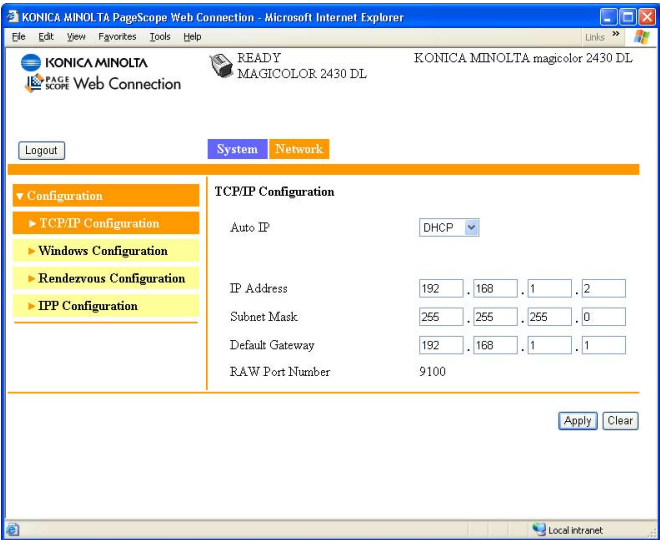
The **System/Online Assistance** window allows you to configure the following items:

Item	Description
Contact Name	Sets the name of the person or organization responsible for providing assistance with the printer.  Range: Up to 63 characters Default: KONICA MINOLTA Customer Support
Contact Information	Sets the telephone number for printer assistance.  Range: Up to 127 characters Default: http://printer.konicaminolta.com/
Product Help URL	Sets the help web site address for printer assistance.  Range: Up to 127 characters Default: http://printer.konicaminolta.com/
Corporate URL	Sets the KONICA MINOLTA corporate web site address.  Range: Up to 127 characters Default: http://printer.konicaminolta.com/

Item	Description
Supplies and Accessories	Sets the web address where you can purchase printer supplies and accessories. Range: Up to 127 characters Default: <a href="http://www.q-shop.com">http://www.q-shop.com</a>
Online Help URL	Sets the Web address for on-line assistance. Range: Up to 127 characters Default: <a href="http://pagescope.com">http://pagescope.com</a>
Apply button	Applies the configuration settings for this window.
Clear button	Resets all configuration settings for this window to their user defaults.
Logout button	Logs out of Administrator Mode and returns to User Mode.

# Network

The Network page allows you to configure TCP/IP (Transmission Control Protocol/Internet Protocol) and IPP (Internet Printing Protocol) settings. For more information on these protocols, see chapter 4, “Network Printing in a Windows Environment.”






## Configuration (shown above)

### TCP/IP Configuration

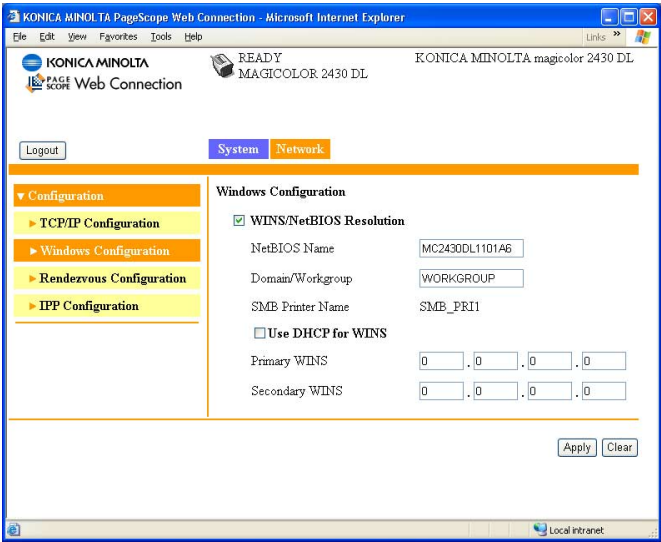
The **Network/Configuration/TCP/IP Configuration** window allows you to configure the following items. For more information on these TCP/IP, see chapter 4, “Network Printing in a Windows Environment.”

Item	Description
Auto IP	Specifies the automatic assigning method for the printer IP address.  Choices: DHCP, BOOTP, None Default: DHCP  Configuration Menu Equivalent: NETWORK/DHCP BOOTP


Item	Description
IP Address*	<p>Sets the printer's IP address.</p> <p>Range: 0–255 for each xxx triplet Default: 192.168.1.2</p> <p> <i>If the IP address is outside the range, the following message displays when you choose the <b>Apply</b> button: "Please enter a correct address." Click <b>OK</b> button, and then type an appropriate number.</i></p> <p>Configuration Menu Equivalent: NETWORK/IP ADDRESS</p>
Subnet Mask*	<p>Sets the printer's subnet mask address.</p> <p>Range: 0–255 for each xxx triplet Default: 255.255.255.0</p> <p> <i>If the subnet mask address is outside the range, the following message displays when you choose the <b>Apply</b> button: "Please enter a correct address." Click <b>OK</b> button, and then type an appropriate number.</i></p> <p>Configuration Menu Equivalent: NETWORK/SUBNET MASK</p>
Default Gateway*	<p>If a router is used on the network, sets the router's address.</p> <p>Range: 0–255 for each xxx triplet Default: 192.168.1.1</p> <p> <i>If the router address is outside the range, the following message displays when you choose the <b>Apply</b> button: "Please enter a correct address." Click <b>OK</b> button, and then type an appropriate number.</i></p> <p>Configuration Menu Equivalent: NETWORK/GATEWAY</p>
RAW Port Number	<p>Identifies the number of the printer's RAW port.</p> <p>Choices: Non-configurable Default: 9100</p>
Apply button	Applies the configuration settings for this window.

Item	Description
Clear button	Resets all configuration settings for this window to their user defaults.
Log out button	Logs out of Administrator Mode and returns to User Mode.
* These settings can be entered only if "DHCP" or "BOOTP" is selected from the Auto IP list. Always enter these addresses without leading zeros. For example, 131.011.010.001 should be entered as 131.11.10.1.	

# Windows Configuration



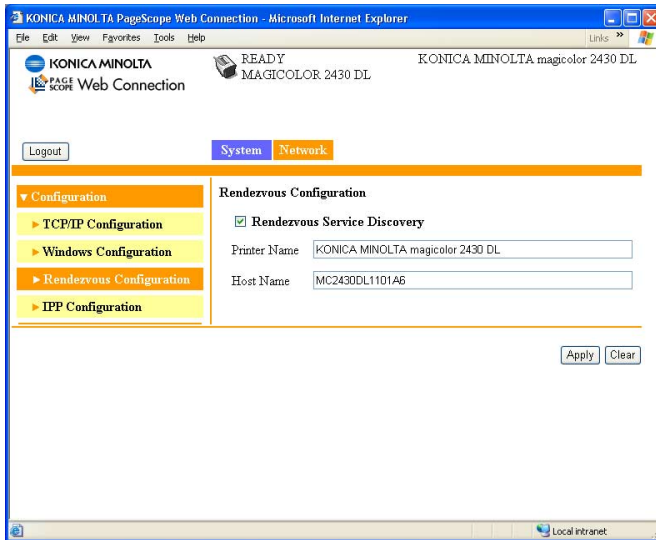
The **Network/Configuration/Windows Configuration** window allows you to configure the following items. In order to apply the settings, the printer must be turned off, then on again after the setting is specified.

 Any unacceptable value entered in the text field prompts an error message: “Invalid name setting. Please enter a correct name.” Click **OK** button and then type an appropriate value.

Item	Description
WINS/NetBIOS Resolution	If the check box is selected, name resolution using WINS and NetBIOS is performed. Set NetBIOS Name, Domain/Workgroup, and WINS.  In addition, “-” cannot be used at the beginning of the name.
NetBIOS Name	Enter using up to 15 alphanumeric characters. Spaces are not allowed.
Domain/Workgroup	Enter the printer’s domain name or workgroup name. Enter using up to 15 alphanumeric characters. Spaces are not allowed.
SMB Printer Name	This name is static.

Item	Description
Use DHCP for WINS	If the check box is selected, the WINS Server address setting is received from the DHCP Server. In this case, the Primary WINS and Secondary WINS settings are void.
Primary WINS*	Set the WINS Server address.
Secondary WINS*	
Apply button	Applies the configuration settings for this window.
Clear button	Resets all configuration settings for this window to their user defaults.
Logout button	Logs out of Administrator Mode and returns to User Mode.
* Always enter these addresses without leading zeros. For example, 131.011.010.001 should be entered as 131.11.10.1.	

## Rendezvous Configuration

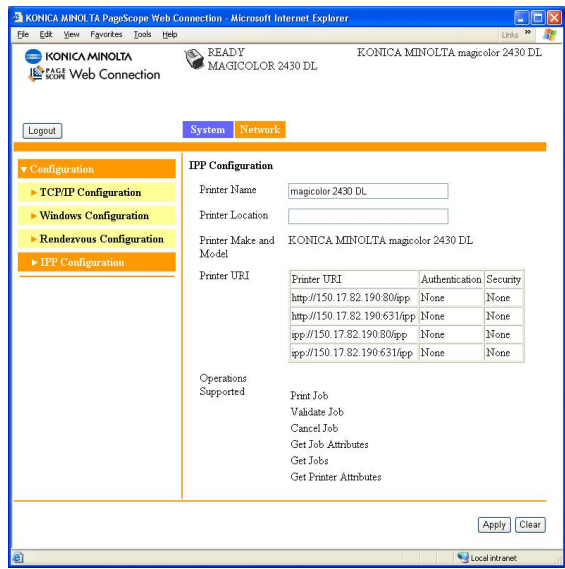


The **Network/Configuration/Rendezvous Configuration** window allows you to configure the following items.

Item	Description
Rendezvous Service Discovery	If this check box is selected, a printer using Rendezvous can be searched for.
Printer Name	Type in the name of the printer.  Range: Up to 63 characters Default: KONICA MINOLTA magicolor 2430 DL
Host Name	Specify the host name.  When accessing a printer with the Web browser from an operating system (Mac OS X) that supports Rendezvous, the host name specified here is used, instead of the IP address. In that case, add ".local." to the host name that is specified. (Example) <code>http://&lt;host_name&gt;.local/</code>  Range: Up to 63 characters (Spaces cannot be used.) Default: MC2430DLXXXXXX ("XXXXXX" indicates the last six digits of the MAC address.)

Item	Description
Apply button	Applies the configuration settings for this window.
Clear button	Resets all configuration settings for this window to their user defaults.

# IPP Configuration



The **Network/Configuration/IPP Configuration** window allows you to configure the following items. For details on IPP, refer to chapter 4, “Network Printing in a Windows Environment.” In order to apply the settings, the printer must be turned off, then on again after the setting is specified.

Item	Description
Printer Name	Sets the printer's name. Range: Up to 127 characters Default: magicolor 2430 DL
Printer Location	Sets the printer's location. Range: Up to 127 characters Default: [Blank]
Printer Make and Model	Specifies the printer make and model. Choices: Non-configurable Default: KONICA MINOLTA magicolor 2430 DL

Item	Description
Printer URI	<p>Specifies the printer's Uniform Resource Identifier (URI), authentication, and security.</p> <p>Range: Non-configurable</p> <p>Defaults: http://192.168.1.2:80/ipp None None  http://192.168.1.2:631/ipp None None  ipp://192.168.1.2:80/ipp None None  ipp://192.168.1.2:631/ipp None None</p>
Operations Supported	<p>Specifies the enabled printer operations.</p> <p>Choices: Non-configurable</p> <p>Defaults: Print Job, Validate Job, Cancel Job, Get Job Attributes, Get Jobs, Get Printer Attributes</p>
Apply button	Applies the configuration settings for this window.
Clear button	Resets all configuration settings for this window to their factory defaults.
Logout button	Logs out of Administrator Mode and returns to User Mode.



---

# Index

---

## A

### **Active job, PageScope Web Connection**

Print job status 110

### **Administrator mode, PageScope Web Connection 101**

## B

**BOOTP** 77, 87

## C

### **Configuration**

Network settings 76, 121

Printer, via PageScope Web Connection 113

### **Configuration, PageScope Web Connection 121**

IPP 128

Rendezvous 126

TCP/IP 121

Windows 124

### **Consumables, PageScope Web Connection 107**

### **Counter, PageScope Web Connection 108**

## D

### **Details, PageScope Web Connection 104**

Consumables 107

Input tray 104

Network 105

### **Device status, PageScope Web connection 103**

**DHCP** 77, 83, 87

## E

**Energy saver, PageScope Web Connection** 117  
**Ethernet interface** 83

## F

**Forced modes** 80

## G

**Gateway** 78, 83  
Manual setting 84

## H

**Host table** 97  
**HTTP** 79, 87

## I

**Input tray, PageScope Web Connection** 104

### Installing

Ghostscript 3  
Printer driver 3, 7, 50

**IP address** 78, 83

Manual setting 84

**IPP** 88

Configuration, PageScope Web Connection 128  
Printing via 90

## J

**Job, PageScope Web Connection** 110  
Active job 110

## L

### Linux

Adding the printer 51  
Checking print jobs 72  
Print settings 60  
Printer driver settings 55  
Printer driver, installing 50  
Printer driver, uninstalling 54  
System requirements 48

Troubleshooting 73  
**LPD/LPR** 88

## M

**Mac address** 79

### Mac OS X

Options 23  
Page setup settings 27  
Print center settings 12  
Print settings 31  
Printer driver, installing 3  
Printer driver, uninstalling 25  
Printer setup utility 12  
System requirements 2  
Troubleshooting 45

## N

### Network connection 82

Address setting 84  
Ethernet interface 83  
Making connections 83  
Supported environments 82  
Theory 82  
Using DHCP 83

### Network menu 76

Accessing 77  
DHCP/BOOTP 77  
Forced modes 80  
Gateway 78  
HTTP 79  
IP address 78  
Mac address 79  
Overview 76  
SNMP 79  
Subnet mask 78  
Using options 77

### Network printing 87

### Network setting 76

### Network, PageScope Web

**Connection** 105  
Configuration 121

## O

**Online assistance, PageScope Web Connection** 109, 119

## P

### **Page setup settings** 27

Custom paper size options 29

Page attributes options 28

Summary 30

### **PageScope Web Connection** 96

Active job 110

Administrator mode 101

Consumables 107

Counter 108

Current status 101

Details 104

Display language 96

Navigation 100

Printer configuration 113

Requirements 96

User mode 101

Viewing printer status 102

Window 100

### **Password, PageScope Web Connection** 115

### **Preference, PageScope Web Connection** 117

### **Print Center** 12

IP printing setting 17

Network connection 15

Rendezvous setting 15

Specifying port 9100 20

USB connection 12

### **Print jobs**

Checking 72

### **Print, PageScope Web Connection** 110, 112

Test print 112

### **Printer name** 97

### **Printer status** 102

### **Protocols, network**

BOOTP 87

DHCP 87

HTTP 87

IPP 88

LPD/LPR 88

SLP 88

SNMP 89

TCP/IP 89

## R

### **Refresh rate, PageScope Web Connection** 117

### **Rendezvous configuration, PageScope Web Connection** 126

## S

### **Safari** 99

### **SLP** 88

### **SNMP** 79, 89

### **Subnet mask** 78, 83

Manual setting 84

### **Summary, PageScope Web Connection**

Device status 103

### **System requirements**

Linux 48

Mac OS X 2

### **System, PageScope Web Connection** 102, 113

Counter 108

Details 104

Online assistance 109, 119

Password 115

Preference 117

Summary 103

User choice 113

## T

### **TCP/IP** 89

### **TCP/IP configuration, PageScope Web Connection** 121

### **Test print, PageScope Web Connection** 112

### **Troubleshooting**

Linux 73

Mac OS X 45

## U

### **Uninstalling**

Printer driver 25, 54

**User choice** 113

**User mode, PageScope Web  
Connection** 101

## W

**Web page, printer** 97

Browser 97

Printer name 97

**Windows configuration, PageScope  
Web Connection** 124