

System Requirements

- Computer:
PC with a Pentium 2, 400 MHz or faster processor
(A Pentium 3, 500 MHz or faster processor is recommended.)
- Operating system:
 - Microsoft Windows XP Home Edition/Professional, Windows Server 2003, Windows 2000, Windows Me, Windows 98SE
- Available hard disk space:
 - Approximately. 20 MB (printer driver and Status Display)
- Memory:
128 MB or more
- Interface:
 - 10Base-T/100Base-TX (IEEE 802.3) Ethernet interface port
 - USB 2.0 or later interface port
- Compatible printers:
magicolor 2430 DL, magicolor 5430 DL, magicolor 5440 DL
- Printer driver:
Must be installed
 - magicolor 2430 DL version 1.7.925.0 or later
 - magicolor 5430 DL version 1.9.126.0 or later
 - magicolor 5440 DL version 1.6.1130 or later

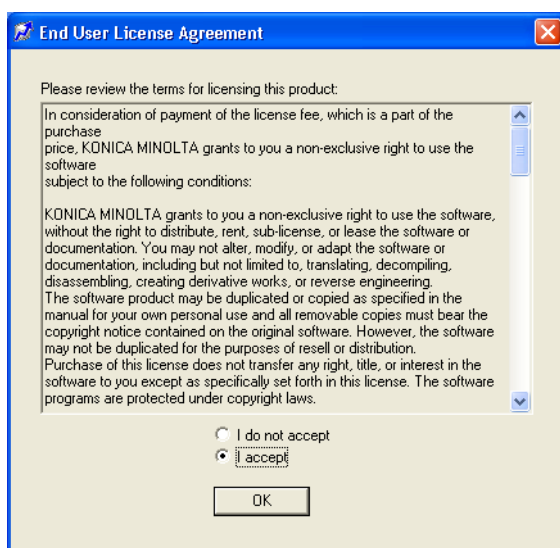
Starting magicolor DL Series Firmware Updater



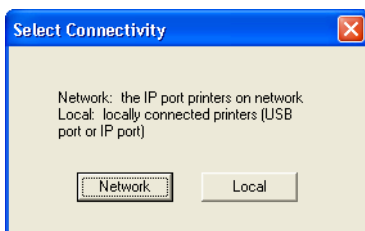
CAUTION

Before starting the firmware updater, make sure that the printer driver is installed.

- 1 Download the firmware updater from the Web site, and then decompress it in any folder.
- 2 Double-click **magicolor DL Series Firmware Updater.exe**.
- 3 Select **I accept**, and then click the **OK** button.



- 4 Select the appropriate connection for the environment where the printer is being used.



For a network connection: The firmware updater searches the printers connected to the Local Area Network.	Select Network . → p. 3
For a local (IP) connection: The firmware updater searches the printers listed in the Printers folder on your computer.	Select Local . → p. 8
For a local (USB) connection: The firmware updater searches the printers listed in the Printers folder on your computer.	Select Local . → p. 13

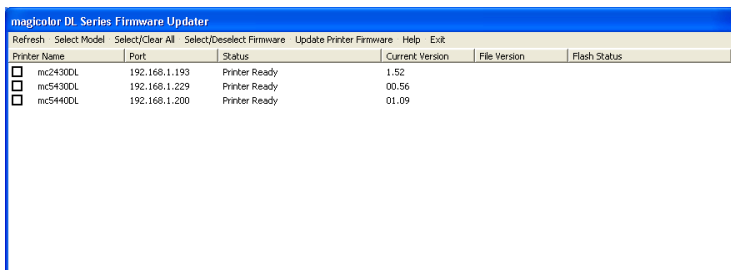
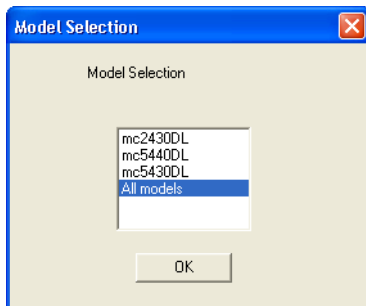
For a network connection

- 1 When using Windows XP Service Pack 2 or later, the following message will appear. Click the **Unblock** button.

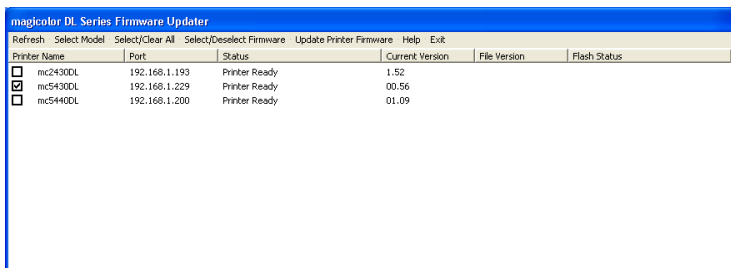


- 2 Select the appropriate printer model, and then click the **OK** button.

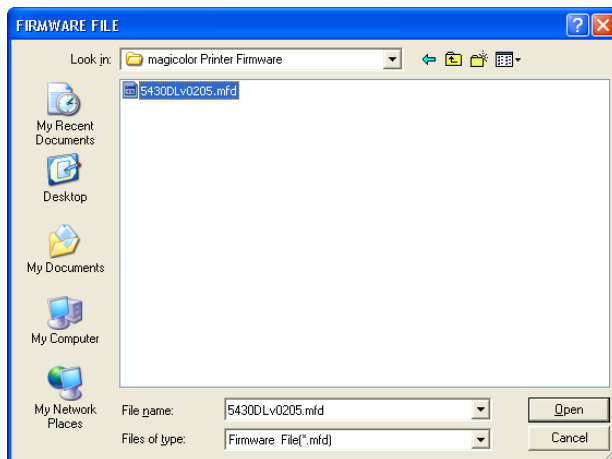
A list of printers on the network appears.



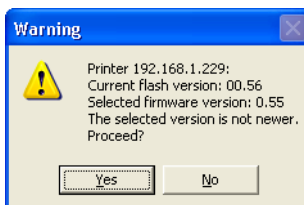
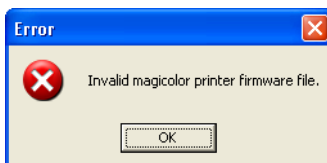
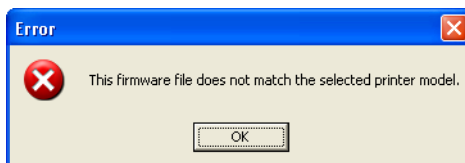
- 3 Select the check box for the printer whose firmware is to be updated, and then click **Select/Deselect Firmware** in the menu bar.



- 4 Select the updated firmware file for the printer, and then click the **Open** button.

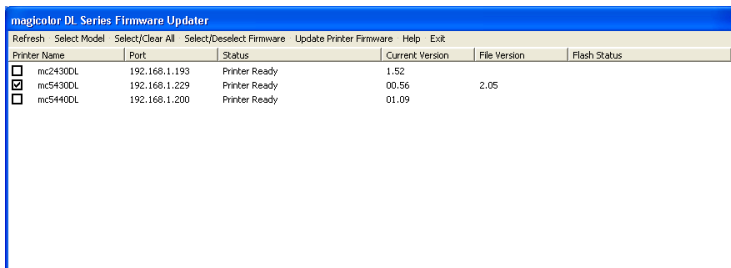


If one of the following messages appears, an incorrect firmware file was selected. Click the **OK** or **No** button, and then select the correct firmware file.

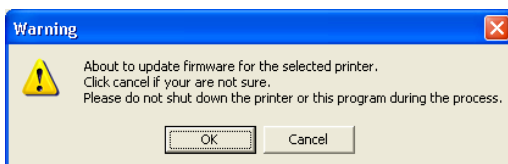


5 Click **Update Printer Firmware** in the menu bar.

As an example, the following dialog box shows file version 2.05 selected.

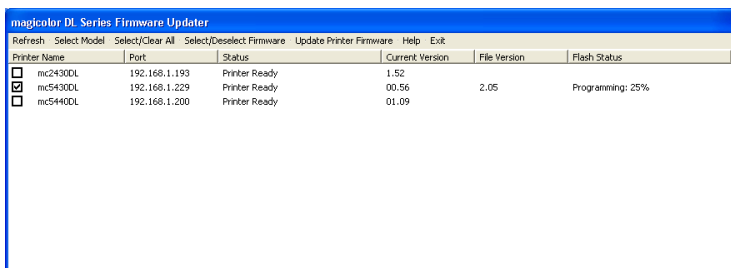
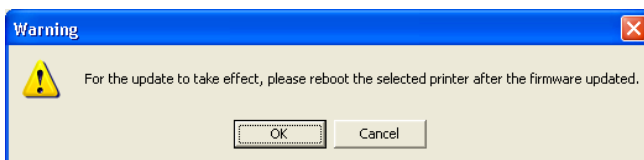


6 Click the **OK** button.



7 Click the **OK** button.

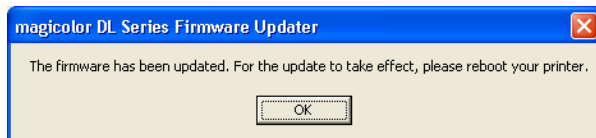
Updating of the firmware begins.



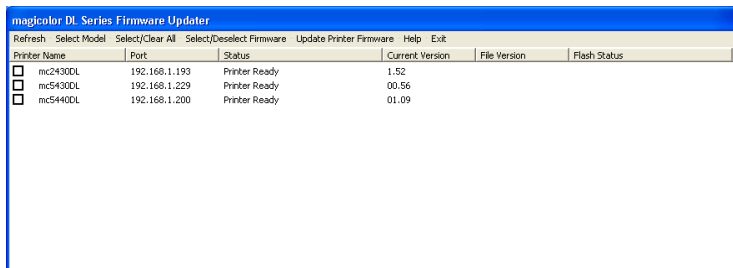
Do not turn off the printer while its firmware is being updated.



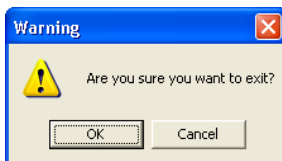
If the following message appears, click the **OK** button.



- 8 Reboot your printer.
- 9 Click **Exit** in the menu bar



- 10 Click the **OK** button to exit the Updater.

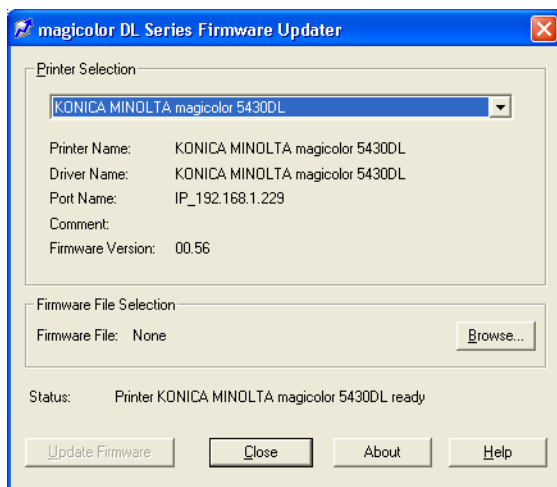


For a local (IP) connection

- 1 When using Windows XP Service Pack 2 or later, the following message will appear. Click the **Unblock** button.

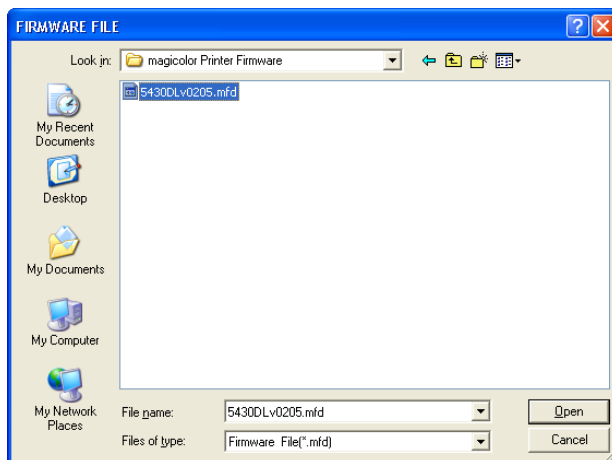


- 2 From the **Printer Selection** list, select the printer whose firmware is to be updated.

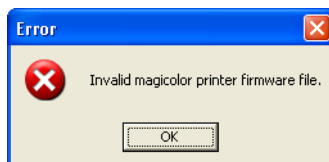
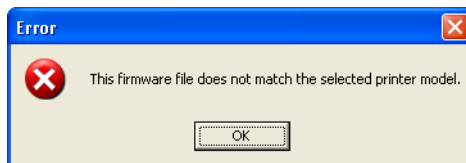


- 3 Click the **Browse** button.

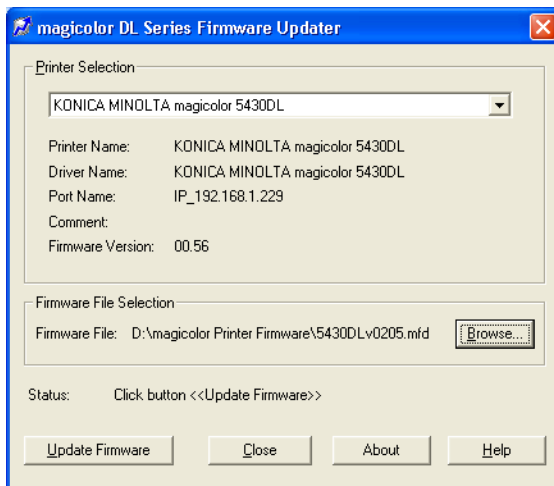
- 4 Select the updated firmware file for the printer, and then click the **Open** button.



If one of the following messages appears, an incorrect firmware file was selected. Click the **OK** or **No** button, and then select the correct firmware file.



- 5 Click the **Update Firmware** button.



- 6 Click the **OK** button.

