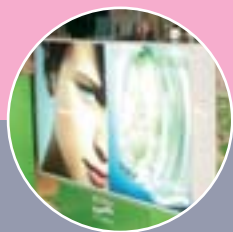




Optional electrical rewinding system to handle demanding job runs.



Creative applications with Sirocco 1600

EDNord - Istedgade 37A - 9000 Aalborg - telefon 96333500

SIROCCO 1600

Technical Specifications

Max. working width	1600 mm (63")
Width of the roller	1674 mm (66")
Diameter of the heating rollers	78 mm (3 1/16")
Max. thickness of print + board	25 mm (1")
Max. thickness of the film	250 microns / side (10 mil)
Adjustment and display of the roller temperature	yes, from 40 to 160°C 104 to 320°F
Digital display of the roller pressure	yes
Upper & lower winding and unwinding spindles	yes
Number of spindles delivered with the machine	4
Max. speed meter/min - (ft/min)	3 - (10)
Reverse operation	yes
Motor control pedal	yes
Emergency stop button	2
Stand mounted on self-locking castors	yes
Electrical print rewinding system	Optional
Power of the motor (W)	100
Heating power (W)	3400
Voltage	230V / 50Hz - 60 Hz single phase
Amperes	16 amps
Size of the machine	L 194x D 76x H 137cm - (77" x 30" x 54")
Weight of the machine kg - (Lbs)	287 - (632)
Size of the shipping crate	L 225x D 105x H 100 cm - (89"x42" x40")
Shipping weight kg - (Lbs)	335 - (737)
Made in France	
EC Certification	



KALA SAS - Parc de l'Ecotay
35 410 Nouvoitou - France

Tel. : +33 (0)2 99 37 64 64 - Fax : +33 (0)2 99 37 64 65
Internet : www.kala.fr - e-mail : info@kala.fr